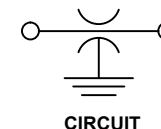


- NOTES
1. OPERATING TEMPERATURE RANGE -55°C TO +125°C.
 2. GOLD PLATED CASE AND LEAD.
 3. EPOXY SEALED ON THE OPPOSITE END FROM THE GLASS SEAL.
 4. PROPER INSTALLATION REQUIRES FIRM STEADY PRESSURE UNTIL FLANGE IS FULLY SEATED.
 5. RECOMMENDED MOUNTING HOLE: $.085 \pm .001$ [2.18 \pm 0.01]
 6. END OF LEAD INDICATED TO BE FREE OF BURRS.
 7. TUSONIX NON-RoHS COMPLIANT PART NUMBER: 4310-015.
TUSONIX RoHS COMPLIANT PART NUMBER: 4310-015LF.
CUSTOMER MUST SPECIFY NON-RoHS OR RoHS PART NUMBER WHEN ORDERING.
 8. COLOR CODE: YELLOW/YELLOW. RoHS COMPLIANT PART MARKED WITH ADDITIONAL GREEN DOT FOR IDENTIFICATION.

[illegible]