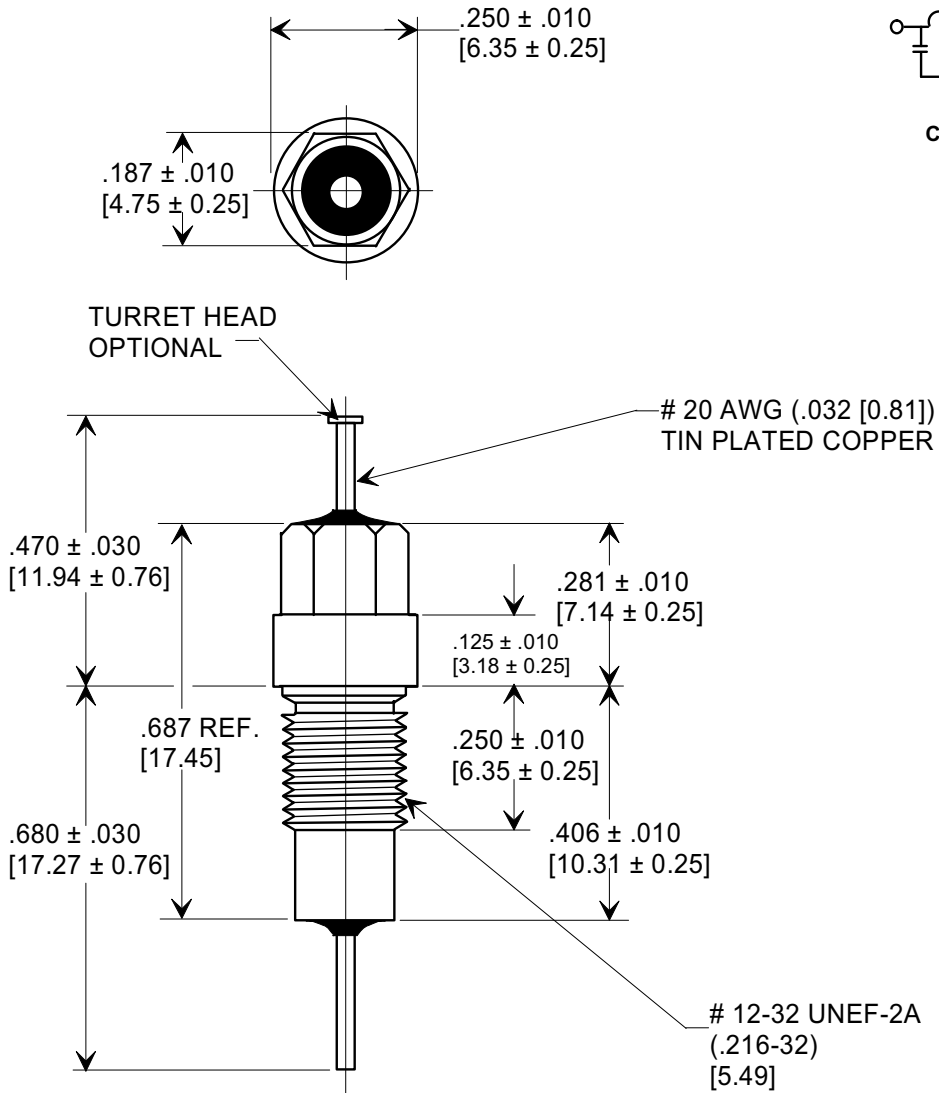
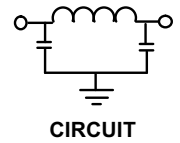
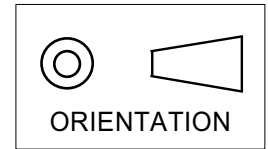


**MARKETING SALES DRAWING**  
**DIMENSIONS IN INCHES - DO NOT SCALE THIS DRAWING**  
**DIMENSIONS IN METRIC - [ ]**

Electrical Testing  
per Tusonix standard  
test plans and Mil-Std-202  
Test Methods.



MIN. CAP.	+ 125 °C WORKING VOLTAGE	I.R. MIN. @ 100 VDC	DWV	CURRENT	MINIMUM NO LOAD INSERTION LOSS (dB) AT 25°C PER MIL-STD-220			
					5 MHz	20 MHz	1 GHz	10 GHz
12,000 pF	70 VDC	10 GΩ	500 VDC	10 A	20	48	65	65

<b>X-2015 Rev-0</b> <b>REVISION RECORD</b> Original Release C.O. WAS SK 7096-002-S EC. 6-14-93 <b>930528-2</b> 0 DWG. REVISED EC. 5-12-94 <b>940217-3</b> 1 RDN TO COMPUTER FORMAT L.E. 06-03-02 <b>20020528-3-04</b> 2	<b>--TOLERANCES--</b> Unless Otherwise Specified DECIMAL ± // // // // ANGLES ± // // // //		Title <b>EMI FILTER</b> <b>MIL 15733/61-0009</b>	
	<b>TUSONIX</b> TUCSON, ARIZONA		Drawn L.E. 06-03-02 Scale 3 X	Approved J.Mc. 06-03-02
	<b>A</b>		<b>4253-500</b>	