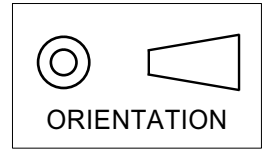
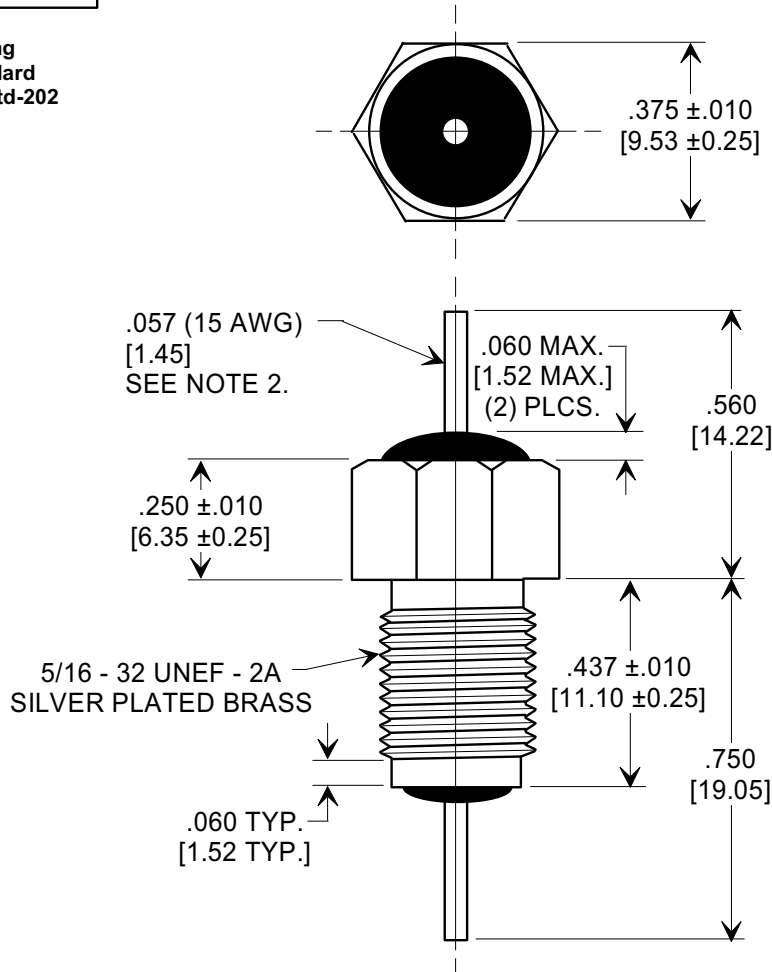
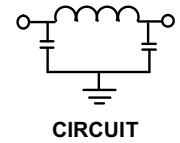


This drawing is the property of Tusonix, Inc., and may not be used, reproduced, published or disclosed to others without expressed authorization by Tusonix Inc.

**MARKETING SALES DRAWING**  
**DIMENSIONS IN INCHES - DO NOT SCALE THIS DRAWING**  
**DIMENSIONS IN METRIC - [ ]**



**Electrical Testing**  
per Tusonix standard  
test plans and Mil-Std-202  
Test Methods.



**NOTES:**

- TUSONIX NON-RoHS PART NUMBER: 4206-007.  
TUSONIX RoHS COMPLIANT PART NUMBER: 4206-007 LF.  
CUSTOMER MUST SPECIFY NON-RoHS OR RoHS PART NUMBER WHEN ORDERING.
- LEAD FINISH: NON-RoHS PART #: 60/40 SOLDER PLATED COPPER. RoHS PART #: SILVER PLATED COPPER.
- PART MARKING: TRADEMARK AND VARIATION NUMBER ON HEX FLATS.  
NON-RoHS PART: BLACK INK. RoHS PART: GREEN INK.
- SUPPLIED WITH SILVER PLATED COPPER ALLOY HEX NUT AND INTERNAL TOOTH LOCK WASHER.

CAP. pF	WORKING VOLTAGE Vdc		CURRENT dc	MINIMUM NO LOAD INSERTION LOSS (dB) AT 25°C PER MIL-STD-220				IR Min	DWV
	+ 85° C	+ 125° C		10 MHz	100 MHz	1 GHz	10 GHz		
4500 / 9000	700	500	25 A	15	65	70	70	10 G	1400 VDC

X-2015 Rev-0	<b>REVISION RECORD</b>		<b>ECO-4643</b>	--TOLERANCES-- Unless Otherwise Specified				Title		
	Original Release C.O. <b>3139</b>	<b>0</b>		DECIMAL ± .031 [0.79]				<b>EMI FILTER</b>		
	DWN TO COMP. FMT DIM. RREVISED .560 WAS "A". L.E. 12-04-98	<b>1</b>		ANGLES ±				Drawn	S.M. 12-03-98	Scale 2.5 X
	<b>19981202-1-01</b> ADDED NOTES & METRIC. S.M. 01-27-99	<b>2</b>		<b>TUSONIX</b> TUCSON, ARIZONA				Approved		<b>4206-007</b>
<b>19990126-1-01</b> REVISED NOTES. S.M. 10-24-05	<b>3</b>	J.Mc. 12-03-98								
<b>20051006-1-04</b> REVISED NOTES. R.J. 06-22-15	<b>A</b>									