

# RS 76 full-travel keyswitches



## General data

The RS 76 full-travel keyswitches are designed for configuring keyboards. They offer very comfortable operation with an overall height of 15.5 / 15.9 mm and a key travel of 4 mm.

The modular system with a grid of  $3/4" = 19.05$  mm enables you to design any key block you may want. **Mechanical contact system RS 76 M**

A gold alloy is used as the contact material and provides high contact reliability, low contact resistance and short bouncing time. **Solid-state contact system RS 76 C**

The solid-state switch in Hall-IC technology ensures bounce-free and wear-free switching and a long operating life. Function: When pressing the keys, a permanent magnet changes its position relative to the Hall-IC and thereby generates an output signal.

Their use is especially recommended in hostile environments and for heavy duty applications.

## Content

<b>RS 76 M full-travel keyswitch, non-illuminated</b>	<b>4 - 126</b>
RS 76 M keyswitch, non-illuminated	4 - 127
RS 76 M keyswitch with diode, non-illuminated	4 - 127
<b>RS 76 M keyswitch, illuminated</b>	<b>4 - 128</b>
RS 76 M keyswitch, illuminated, momentary	4 - 129
RS 76 M keyswitch, illuminated, latching	4 - 129
RS 76 MX keyswitch, fully illuminated	4 - 130
<b>RS 76 C keyswitch, non-illuminated</b>	<b>4 - 132</b>
RS 76 C keyswitch, non-illuminated	4 - 133
<b>RS 76 C keyswitch, illuminated</b>	<b>4 - 134</b>
RS 76 C keyswitch, illuminated, momentary	4 - 135
RS 76 C keyswitch, illuminated, latching	4 - 135
<b>Keycaps for RS 76, non-illuminated</b>	<b>4 - 136</b>
Keycap for RS 76, opaque	4 - 136
Keycap for RS 76, opaque, with nail protection	4 - 137
Keycap for RS 76 with legend insert	4 - 137
<b>Keycaps for RS 76, illuminated</b>	<b>4 - 138</b>
Keycap for RS 76 with light bar	4 - 138
Keycap for RS 76, illuminated, with legend insert	4 - 139
Keycap for RS 76, illuminated, with nail protection and legend insert	4 - 139
Keycap for RS 76, illuminated, with legend insert	4 - 140
Keycap, fully illuminated, for RS 76 MX	4 - 140
<b>Keycaps for RS 76, with legend, two-shot moulded/keycap sets</b>	<b>4 - 142</b>
Keycap set for RS 76, symbols A-Z	4 - 142
Keycap set for RS 76, symbols 0-9	4 - 143
<b>RS 76 accessories</b>	<b>4 - 144</b>
Cover for RS 76 IP40	4 - 144
PCB Keyswitches	4 - 119

Stock items are marked  
by **bold printed** order numbers.

The Rafi full-travel keyswitches RS 76 are modular systems for designing individual key blocks and keyboards in the 3/4 inch (= 19.05 mm) grid.

### Definitions

#### Momentary keyswitches

Momentary keyswitches return to their initial position after being pressed (momentary action).

#### Latching keyswitches

Latching keyswitches lock when actuated and are returned to their initial position when pressed again (push-push action).

#### Keycap materials

Keycap without legend insert: ABS

Keycap with legend insert:

– Keycap body: ABS

– Lens: PC

#### Keycap, n-module

A 2-module keycap f. ex. has the twofold length of a 1-module keycap.

### Contact principle

There are two contact principles:

– **Mechanical (M):** Cross contact (RS 76 M)

Bridge contact

(RS 76 M, illuminated)

– **Contactless (C):** Based on Hall-IC (RS 76 C)

### Soldering

The soldering temperature should not exceed 250 °C, the soldering time not be longer than 3 seconds.

All RS 76 C-keyswitches can be soldered in solder baths.

The assembled PCB should be cleaned only by using brushing machines from the soldering side of the PCB.

The cleaning agent should not exceed the component side of the PCB.

All keyswitches can be flow-soldered, provided that an acid fluxer is used and that the whole unit is cleaned afterwards in de-ionised water.

### Cleaning

Keyswitches should not be washed in freon or similar substances as a lubricant is used, otherwise the operating life of the keyswitches will be reduced.

If complete keyboards are to be cleaned by dipping, it must be remembered that the keyboard may only be dipped in the dipping solution as far as the component side of the PCB.

## Legending of keycaps

Keycaps can be legended by different methods:

### Two-shot moulding

Using this method the symbol is separately manufactured from a plastic and then the appropriate keycap form is moulded round it. Advantage: The character becomes an integrated part of the keycap, thus eliminating abrasion. All Rafi keycap sets with standard legending are manufactured by this method.

Customer specific two-shot moulded keycaps on request.

### Printing

Keycaps can be printed with a two-component ink on request. The abrasion of this kind of legending is high. This method of legending is suitable for average volumes.

### Engraving

In this labour intensive process the keycaps are engraved with the required symbol, then inlaid with ink. Only used for small volumes.

### Laser-printing

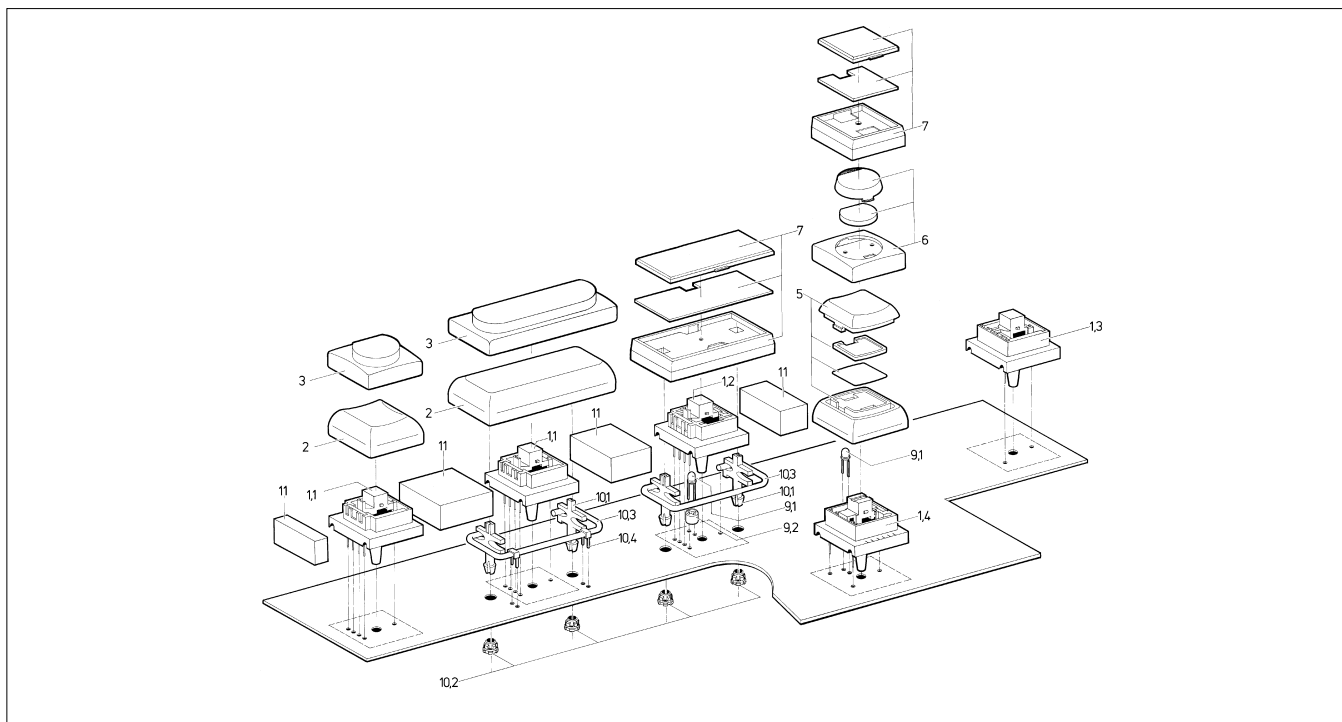
This method of legending can be recommended when complete keyboards are required in different keyboard layouts for which Rafi will develop the respective software. The keyboards can then be legended within a short time. This method of legending is particularly recommended for average to large volumes.

### Legend inserts

In the case of keycaps with replaceable legend inserts it is possible to print or engrave the legend inserts. As these inserts are protected by the lens, there can be no abrasion here either.

## RS 76 full-travel keyswitches

### Design



#### No. Description

- 1.1 Keyswitch RS 76 C
- 1.2 Keyswitch RS 76 C with LED
- 1.3 Keyswitch RS 76 M
- 1.4 Keyswitch R 76 M with LED
- 2 Keycap, 1- resp. multi-module
- 3 Keycap with nail protection, 1- resp. multi-module
- 5 Keycap, illuminated
- 6 Keycap, illuminated
- 7 Keycap, illuminated
- 8 LED

- 9 Spacer for LED (for RS 76 C only)
- 10.1 Plunger for multi-module keycaps\*
- 10.2 Sleeve for multi-module keycaps\*
- 10.3 Metal lever for multi-module keycaps\*
- 10.4 Bearing bracket for multi-module keycaps\*
- 11 Covers

\* These parts are included as a complete packet in the delivery of keycaps  $\geq 2$ -module.

### Hole Pattern PCB RS 76 M/RS 76 C

The hole patterns apply to the horizontal position of the keycaps only. Should they be in a vertical position,

the momentary keyswitch must be mounted accordingly, i.e. rotated by 90°.

#### For 1 – 1<sup>3</sup>/<sub>4</sub>-module keycaps (view on component side)

	Momentary keyswitch, non-illuminated	Momentary keyswitch, illuminated
RS 76 M		
RS 76 C		

#### For 2-, 3- and 8-module keycaps (view on component side)

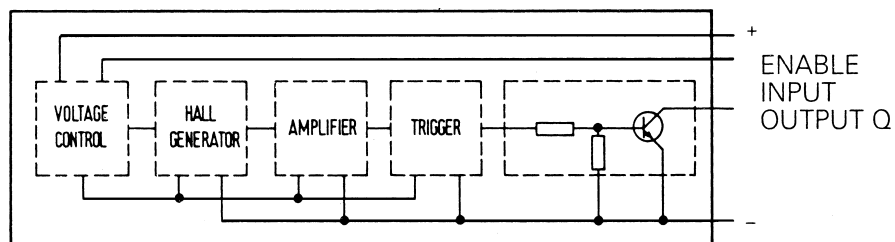
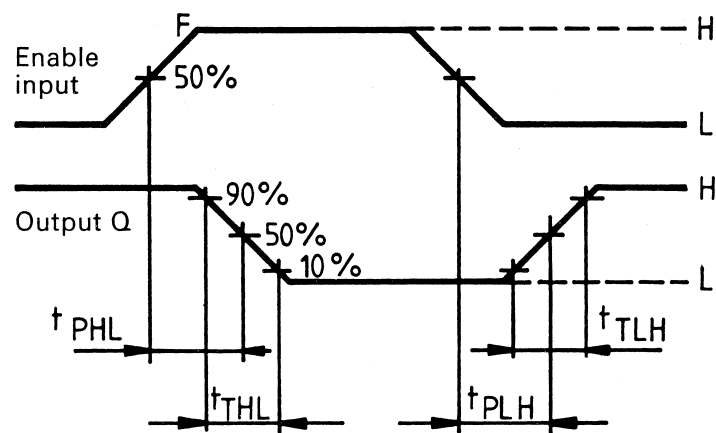
RS 76 M/C	
-----------	--

Keycap	L 1 mm	L 2 mm
2-module	25.40	22.86
3-module	30.48	24.13
5-module	68.58	68.58

**Important note:** In the case of 2-, 3- and 8-module keycaps, additional holes must be provided for the accessories.  
In the case of keycaps < 2-module, neither accessories nor holes are required.

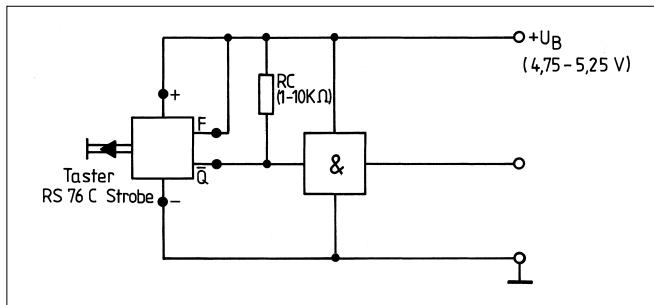
## Specific Technical Data RS 76 C

Output pulse diagram Dynamic characteristics (max.)		Tw = 25 °C	Tw = 50 °C	Tw = 70 °C
Turn-on delay time	$t_{PHL}$	3 $\mu$ s	7 $\mu$ s	10 $\mu$ s
Turn-off delay time	$t_{PHL}$	4 $\mu$ s	5 $\mu$ s	6 $\mu$ s
Fall/rise time	$t_{PHL}$	2 $\mu$ s	2,5 $\mu$ s	3 $\mu$ s
	$t_{PHL}$	1 $\mu$ s	1,5 $\mu$ s	2,5 $\mu$ s

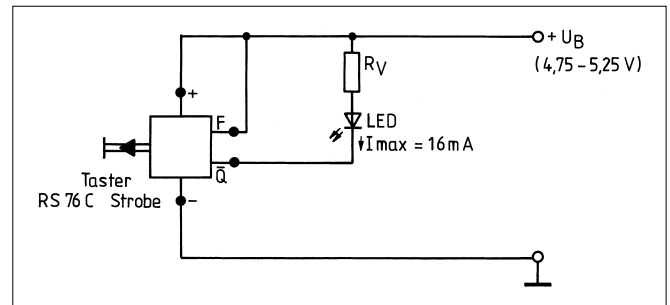


Static with Enable Input

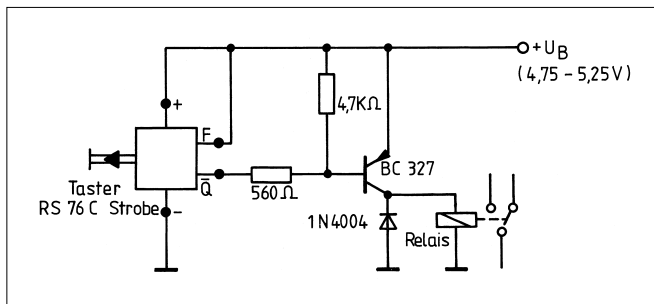
### Examples for Application RS 76 C



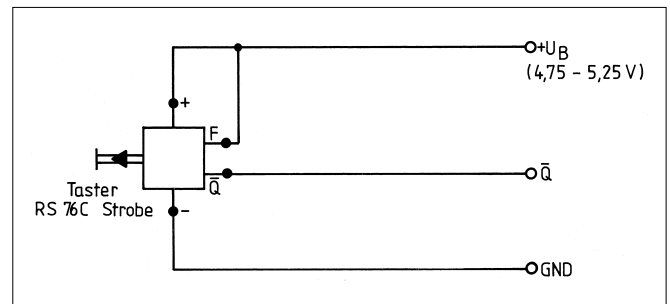
Driving of logic components



Indication of logical states

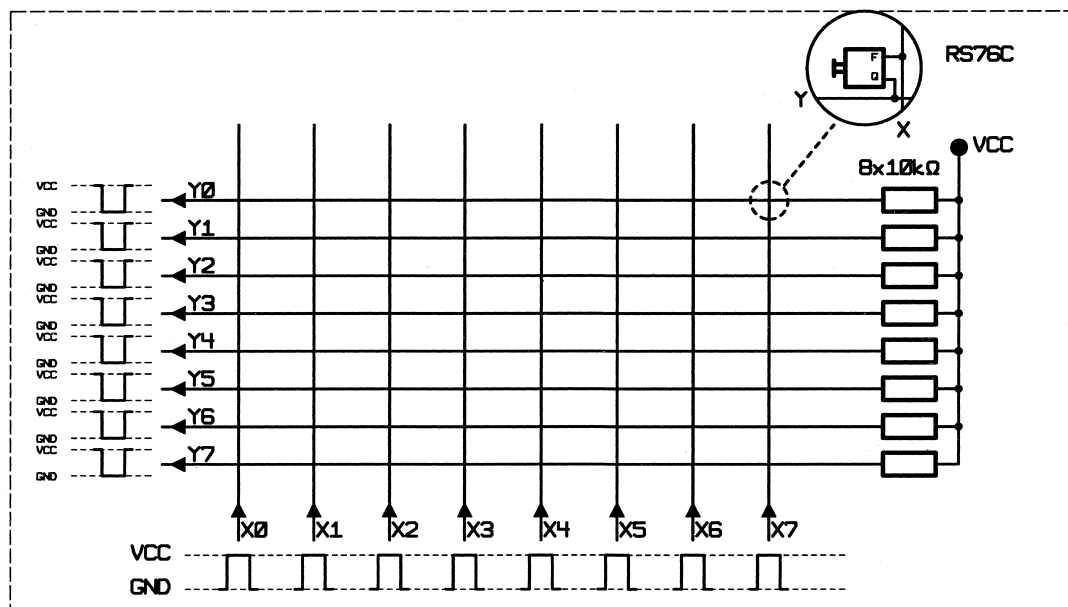


Driving of a PNP transistor



Use as static key with open collector output.  
Output transistor (NPN) is conductive when actuated.

4



Use in keyboards

### RS 76 M full-travel keyswitch, non-illuminated



### Technical data

#### General information

Recommended key grid 19.05 mm

#### Mechanical design

Contact function momentary  
Mounting soldering  
Terminals solder terminals, tin-plated  
Contact system cross contact  
Contact arrangement 1 NO  
Contact materials Au alloy  
Illumination no

#### Mechanical characteristics

Operating force max. see order block  
Operating travel 4 mm  
Switching travel 1.5 - 2.8 mm  
Robustness min. 100 N

#### Electrical characteristics

Rated voltage min. 2 V (with Diode 3 V)  
Rated voltage max. 42 V  
Rated current min. 0.01 mA  
Rated current max. 100 mA  
Rated power max. 1 W  
Contact resistance when new max. 100 mΩ (without Diode)  
Contact resistance acc. to life max. 3 Ω (without Diode)  
Insulation resistance 10<sup>9</sup> Ω  
ESD strength max. 8 kV  
Bouncing time max. 5 ms

#### Other specifications

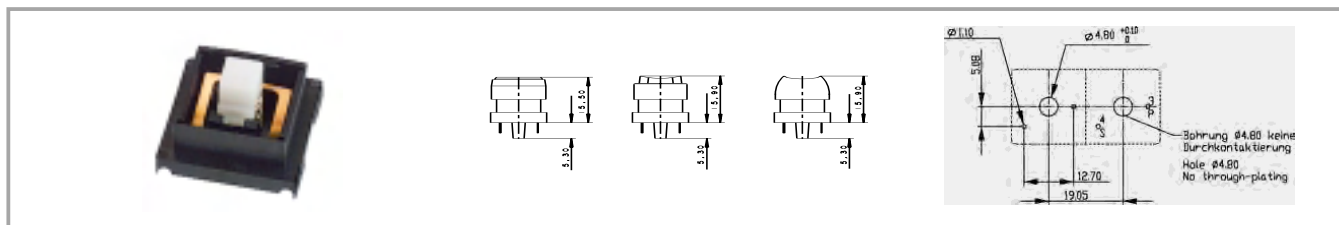
Ambient temp. operating min. -25 °C  
Ambient temp. operating max. +70 °C  
Storage temperature min. -40 °C  
Storage temperature max. (product) +80 °C  
Storage temperature max. (rail) +50 °C  
Resistance to constant environment according to IEC 600 68-2-3 and 2-30  
Resistance at variable environment according to IEC 600 68-2-14 and 2-33  
Operating life min. 10<sup>7</sup>  
Degree of protection IP40  
Flammability of materials UL 94 HB

### Accessories RS 76 M full-travel keyswitch, non-illuminated

Description	Photo	Order no.	Page
Keycap for RS 76 with legend insert		<b>5.04.665.222/5520</b>	4 - 137
Keycap for RS 76, opaque, with nail protection		<b>5.80.000.000/0710</b>	4 - 137
Keycap for RS 76, opaque		<b>5.82.000.000/0152</b>	4 - 136

## RS 76 full-travel keyswitches

### RS 76 M keyswitch, non-illuminated



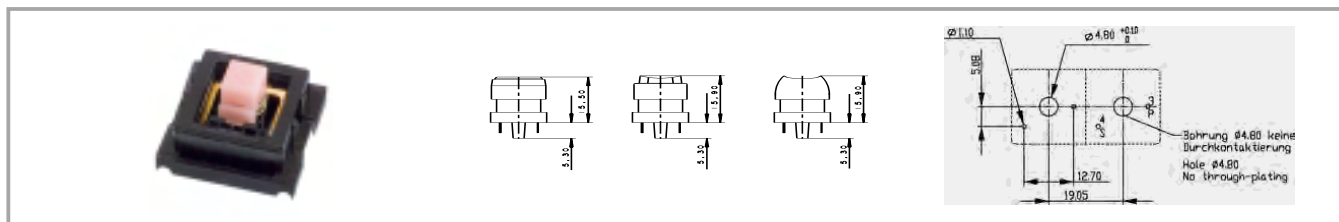
Contact function	Illumination	Contact arrangement	Contact materials	Operating travel	Operating force max.	Order no. complete
momentary	no	1 NO	Au alloy	4 mm	0.9 N	<b>3.13.002.502/0000</b>
momentary	no	1 NO	Au alloy	4 mm	1.4 N	<b>3.13.002.512/0000</b>

Technical data see page 4 - 126

For accessories, refer to RS 76 special accessories.

For keycaps, see keycaps for RS 76.

### RS 76 M keyswitch with diode, non-illuminated



Contact function	Illumination	Contact arrangement	Contact materials	Operating travel	Operating force max.	Order no. complete
momentary	no	1 NO	Au alloy	4 mm	0.9 N	<b>3.13.005.001/0000</b>
momentary	no	1 NO	Au alloy	4 mm	1.4 N	<b>3.13.005.011/0000</b>

Technical data see page 4 - 126

For accessories, refer to RS 76 special accessories.

For keycaps, see keycaps for RS 76.



### RS 76 M keyswitch, illuminated



### Technical data

#### General information

Recommended key grid 19.05 mm

#### Mechanical design

Contact function see order block  
Mounting soldering  
Terminals tin-plated  
Contact system bridge contact  
Contact arrangement 1 NO  
Contact materials Au alloy  
Illumination see order block

#### Mechanical characteristics

Operating force max. 1 N  
Operating travel 4 mm  
Switching travel 1.5 - 2.8 mm  
Robustness min. 100 N

#### Electrical characteristics

Rated voltage min. 2 V  
Rated voltage max. 42 V  
Rated current min. 0.01 mA  
Rated current max. 100 mA  
Rated power max. 1 W  
Contact resistance when new max. 200 mΩ

Contact resistance acc. to life max. 3 Ω  
Insulation resistance 10<sup>9</sup> Ω  
ESD strength max. 8 kV  
Bouncing time max. 10 ms

#### Other specifications

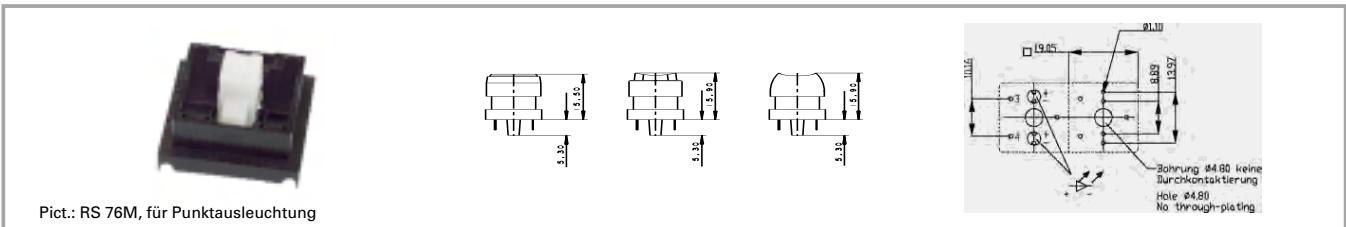
Ambient temp. operating min. -25 °C  
Ambient temp. operating max. +70 °C  
Storage temperature min. -40 °C  
Storage temperature max. (product) +80 °C  
Storage temperature max. (rail) +50 °C  
Resistance to constant environment according to IEC 600 68-2-3 and 2-30  
Resistance at variable environment according to IEC 600 68-2-14 and 2-33  
Operating life min. 10<sup>7</sup> momentary, 10<sup>5</sup> latching  
Degree of protection IP40  
Flammability of materials UL 94 HB

### Accessories RS 76 M keyswitch, illuminated

Description	Photo	Order no.	Page
LED yellow, 3mm		1.90.690.103/0000	5 - 21
Cover for RS 76 IP40, 1-module, dark grey		<b>5.04.520.174/0801</b>	4 - 145
Keycap for RS 76, illuminated, with legend insert		<b>5.04.665.522/5520</b>	4 - 139
Keycap for RS 76, illuminated, with nail protection and legend insert		<b>5.04.665.912/5520</b>	4 - 139
Keycap for RS 76 with light bar		<b>5.82.110.000/0710</b>	4 - 138

## RS 76 full-travel keyswitches

### RS 76 M keyswitch, illuminated, momentary

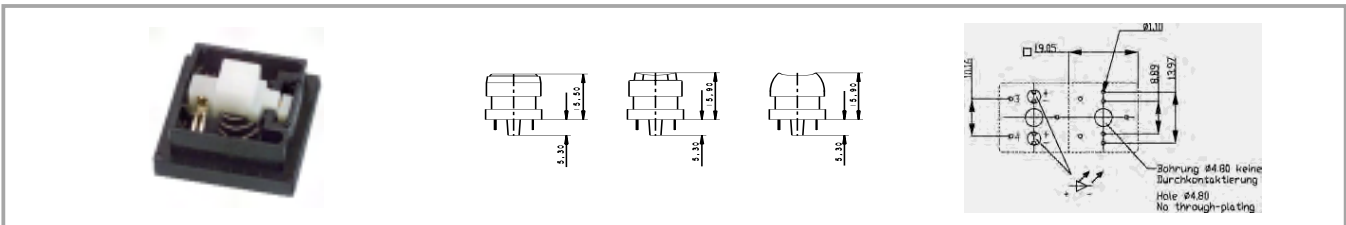


Contact function	Contact system	Illumination	Recommended key grid	Order no. complete
momentary	bridge contact	spot illumination with 3 mm LED possible	19.05 mm	3.13.002.102/0000

Technical data see page 4 - 128

For accessories, refer to RS 76 special accessories.  
For keycaps, see keycaps for RS 76.

### RS 76 M keyswitch, illuminated, latching

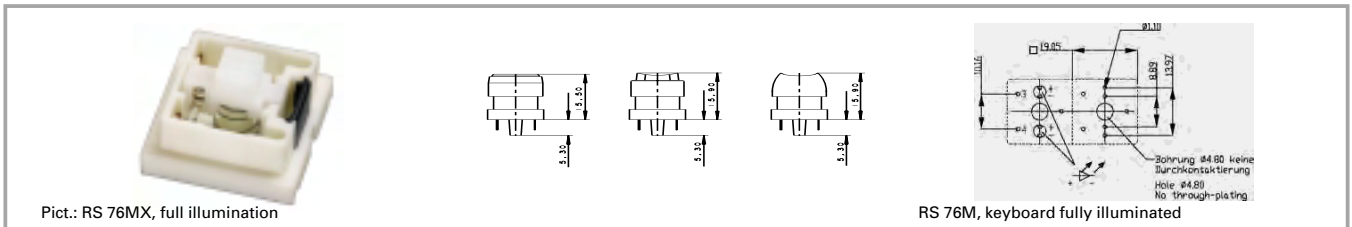


Contact function	Contact system	Illumination	Recommended key grid	Order no. complete
latching	bridge contact	spot illumination with 3 mm LED possible	19.05 mm	3.13.002.022/0000

Technical data see page 4 - 128

For accessories, refer to RS 76 special accessories.  
For keycaps, see keycaps for RS 76.

### RS 76 MX keyswitch, fully illuminated



Contact function	Contact system	Illumination	Recommended key grid	Order no. complete
momentary	bridge contact	full illumination with 2 SMD LED possible	19.05 mm	3.13.002.922/0000

Technical data see page 4 - 128

#### Accessories:

Keycap, fully illuminated, for RS 76 MX: 5.05.511.168/0209

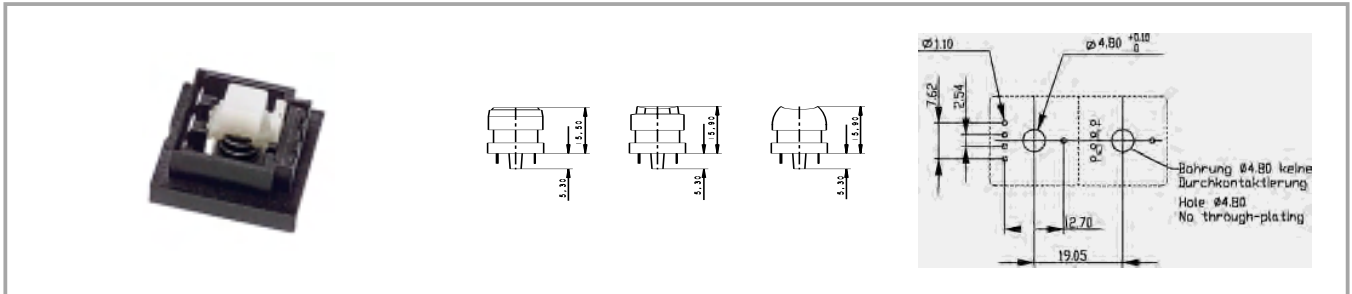
Keycap, fully illuminated, for RS 76 MX: 5.05.511.168/0754

For accessories, refer to RS 76 special accessories.

For keycaps, see keycaps for RS 76.

The SMD LEDs are soldered on the back of the printed circuit board and shine through openings in the board and keyswitch housing.

### RS 76 C keyswitch, non-illuminated



### Technical data

#### General information

Recommended key grid 19.05 mm

#### Mechanical design

Contact function momentary  
Mounting soldering  
Terminals solder terminals, tin-plated  
Contact system contactless with Hall-IC  
Illumination no

voltage (Q) max. bei 16 mA 0.4 V

ESD strength max. 8 kV

Output switching times (Q) bei 25°C,  $t_{PHL}$  3  $\mu$ s

Output switching times (Q) bei 25°C,  $t_{PLH}$  4  $\mu$ s

Output switching times (Q) bei 25°C,  $t_{THL}$  1  $\mu$ s

Output switching times (Q) bei 25°C,  $t_{TLH}$  2  $\mu$ s

#### Other specifications

Reliability of Hall-IC's at 25°C  $\lambda = 2.5 \times 10^{-7} \text{ h}^{-1}$

Ambient temp. operating min. 0 °C

Ambient temp. operating max. +70 °C

Storage temperature min. -40 °C

Storage temperature max. (product) +80 °C

Storage temperature max. (rail) +50 °C

Resistance to constant environment according to IEC 600 68-2-3 and 2-30

Resistance at variable environment according to IEC 600 68-2-14 and 2-33

Operating life min.(mechanical) see order block

Degree of protection IP40

Flammability of materials UL 94 HB

#### Mechanical characteristics

Switching travel off 0.8 ... 2.4 mm  
Operating force max. see order block  
Operating travel 4 mm  
Switching travel on 1.5 - 2.8 mm  
Robustness min. 100 N

#### Electrical characteristics

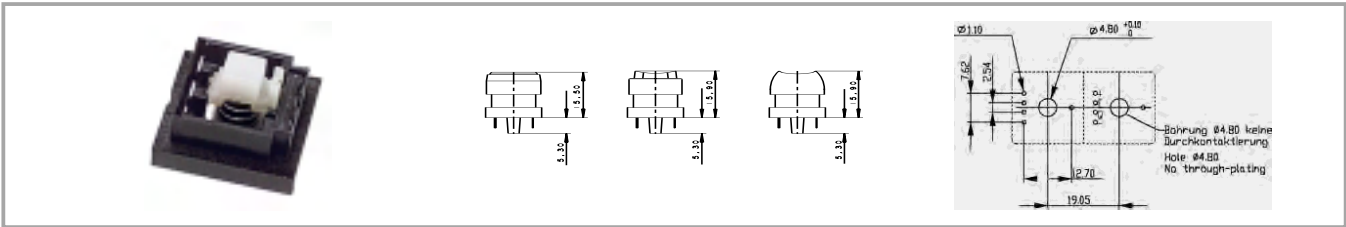
Operating voltage DC 4.75 ... 5.25 V  
Supply current max. at  $U_{IL} = 0 \text{ V}$  0.5 mA  
Supply current max. at  $U_{IH} = 5 \text{ V}$  5 mA  
Input voltage (F) at  $U_{IL} = 0 \text{ V}$  0.4 V  
Input voltage (F) at  $U_{IH} = 2.4 \text{ V}$  5.25 V  
Output load current (Q) max. 16 mA  
Output residual current (Q) max. 10  $\mu$ A  
Output saturation

### Accessories RS 76 C keyswitch, non-illuminated

Description	Photo	Order no.	Page
Keycap for RS 76 with legend insert		5.04.665.222/5520	4 - 137
Keycap for RS 76, opaque, with nail protection		5.80.000.000/0710	4 - 137
Keycap for RS 76, opaque		5.82.000.000/0152	4 - 136

# RS 76 full-travel keyswitches

## RS 76 C keyswitch, non-illuminated

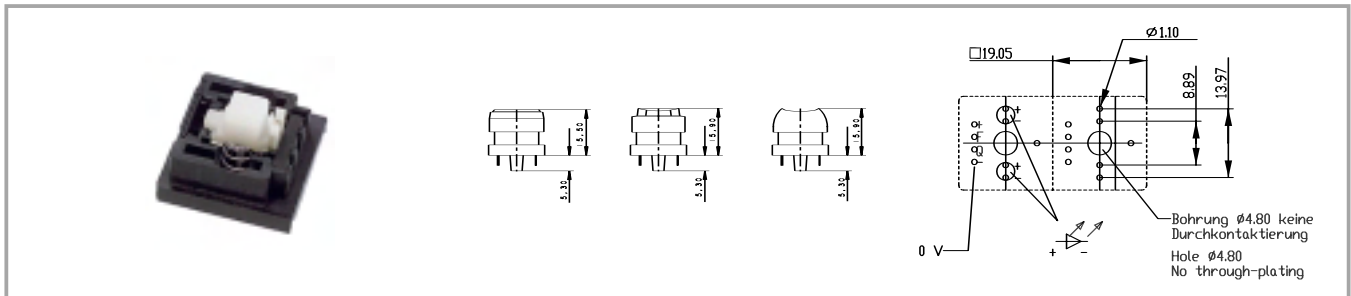


Contact function	Contact system	Illumination	Operating force max.	Operating travel	Order no. complete
momentary	contactless with Hall-IC	no	0.7 N	4 mm	<b>3.13.001.010/0000</b>
momentary	contactless with Hall-IC	no	1 N	4 mm	<b>3.13.001.210/0000</b>

Technical data see page 4 - 132

For accessories and keycaps, refer to RS 76. For applications, refer to the general description of RS 76.

### RS 76 C keyswitch, illuminated



### Technical data

#### General information

Recommended key grid 19.05 mm

#### Mechanical design

Contact function see order block  
Mounting soldering  
Terminals solder terminals, tin-plated  
Contact system contactless with Hall-IC  
Illumination with LED  
LED colour see order block

#### Output saturation

voltage (Q) max. bei 16 mA 0.4 V

ESD strength max. 8 kV

#### Output switching times

(Q) bei 25°C,  $t_{PHL}$  3  $\mu$ s

(Q) bei 25°C,  $t_{PLH}$  4  $\mu$ s

(Q) bei 25°C,  $t_{THL}$  1  $\mu$ s

(Q) bei 25°C,  $t_{TLH}$  2  $\mu$ s

#### Mechanical characteristics

Switching travel on 1.5 - 2.8 mm  
Switching travel off 0.8 ... 2.4 mm  
Operating force max. 0.7 N  
Operating travel 4 mm  
Robustness min. 100 N

#### Other specifications

Reliability of Hall-IC's at 25°C

$\lambda = 2.5 \times 10^{-7} \text{ h}^{-1}$

Ambient temp. operating min. 0 °C

Ambient temp. operating max. +70 °C

Storage temperature min. -40 °C

Storage temperature max. (product) +80 °C

Storage temperature max. (rail) +50 °C

Resistance to constant environment

according to IEC 600 68-2-3 and 2-30

Resistance at variable environment

according to IEC 600 68-2-14 and 2-33

Operating life min.

see order block

Degree of protection

IP40

Flammability of materials

UL 94 HB

#### Electrical characteristics




Number of LED see order block  
Operating voltage DC 4.75 ... 5.25 V  
Supply current max. at  $U_{IL} = 0 \text{ V}$  0.5 mA  
Supply current max. at  $U_{IH} = 5 \text{ V}$  5 mA  
Input voltage (F) at  $U_{IL} = 0 \text{ V}$  0.4 V  
Input voltage (F) at  $U_{IH} = 2.4 \text{ V}$  5.25 V  
Output load current (Q) max. 16 mA  
Output residual current (Q) max. 10  $\mu$ A

### Accessories RS 76 C keyswitch, illuminated

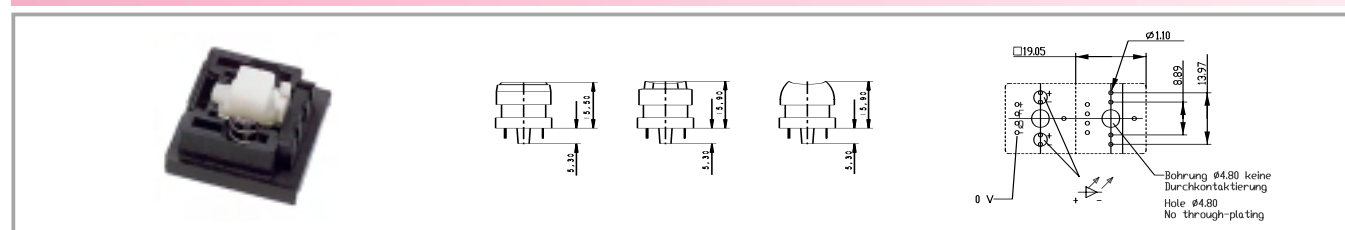
Description	Photo	Order no.	Page
LED yellow, 3mm		1.90.690.103/0000	5 - 21
Cover for RS 76 IP40, 1-module, dark grey		5.04.520.174/0801	4 - 145

## RS 76 full-travel keyswitches

### Accessories RS 76 C keyswitch, illuminated

Description	Photo	Order no.	Page
Keycap for RS 76, illuminated, with legend insert		<b>5.04.665.522/5520</b>	4 - 139
Keycap for RS 76, illuminated, with nail protection and legend insert		<b>5.04.665.912/5520</b>	4 - 139
Keycap for RS 76 with light bar		<b>5.82.110.000/0710</b>	4 - 138

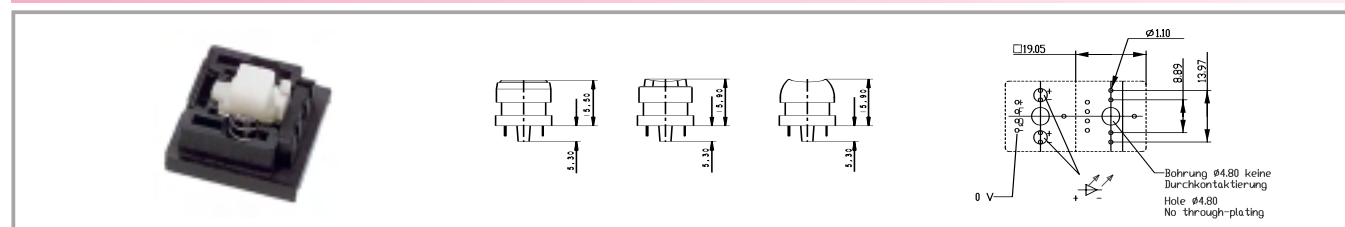
### RS 76 C keyswitch, illuminated, momentary



Contact function	Contact system	Illumination	Operating force max.	Operating travel	Order no. complete
momentary	contactless with Hall-IC	with LED	0.7 N	4 mm	<b>3.13.001.110/0000</b>

Technical data see page 4 - 134

### RS 76 C keyswitch, illuminated, latching



Contact function	Contact system	Illumination	Operating force max.	Operating travel	Order no. complete
latching	contactless with Hall-IC	with LED	0.7 N	4 mm	<b>3.13.001.130/0000</b>

Technical data see page 4 - 134

**Keycaps for RS 76, non-illuminated**



**Keycap for RS 76, opaque**



Size of keycap	Illuminable	Colour of keycap / legending	Colour of lens / legend insert	Order no. complete
1-module	no	light beige/-		<b>5.82.000.000/0710</b>
1-module	no	light grey/-		<b>5.82.000.000/0242</b>
1-module	no	dark grey/-		<b>5.82.000.000/0801</b>
1-module	no	charcoal grey/-		<b>5.82.000.000/0152</b>

Keycap sets available in two-shot moulded design.  
 Other keycap sizes, e.g. 1.25-, 1.5-, 1.75-, 2-, 3-, 5- and 8-module versions available on request.



## RS 76 full-travel keyswitches

### Keycap for RS 76, opaque, with nail protection



Size of keycap	Illuminable	Colour of keycap / legending	Colour of lens / legend insert	Order no. complete
1-module	no	light beige/-		<b>5.80.000.000/0710</b>
1-module	no	light grey/-		<b>5.80.000.000/0242</b>
1-module	no	dark grey/-		<b>5.80.000.000/0801</b>
1-module	no	charcoal grey/-		<b>5.80.000.000/0152</b>

Keycap sets available in two-shot moulded design.

Other keycap sizes, e.g. 1.25-, 1.5-, 1.75-, 2-, 3- and 8-module versions available on request.

### Keycap for RS 76 with legend insert



Size of keycap	Illuminable	Colour of keycap / legending	Colour of lens / legend insert	Order no. complete
1-module	no	light beige/-	colourless/white	<b>5.04.665.222/5520</b>
1-module	no	dark grey/-	colourless/white	<b>5.04.665.228/5520</b>
1-module	no	charcoal grey/-	colourless/white	<b>5.04.665.221/5520</b>
1-module	no	light grey/-	colourless/white	<b>5.04.665.230/5520</b>

Supplied as single parts: Mat lens, legend insert, keycap body.

### Keycaps for RS 76, illuminated



Pict.: 1,5-module, light grey, green lens



light beige

### Keycap for RS 76 with light bar



Pict.: light beige

Size of keycap	Illuminable	Colour of keycap / legending	Colour of lens / legend insert	Order no. complete
1-module	yes	light beige/-		<b>5.82.110.000/0710</b>
1-module	yes	light grey/-		<b>5.82.110.000/0242</b>
1-module	yes	dark grey/-		<b>5.82.110.000/0801</b>
1-module	yes	charcoal grey/-		<b>5.82.110.000/0152</b>

## RS 76 full-travel keyswitches

### Keycap for RS 76, illuminated, with legend insert



Pict.: 1,5-module, light grey, green lens

Size of keycap	Illuminable	Colour of keycap / legending	Colour of lens / legend insert	Order no. complete
1-module	yes	light beige/-	colourless/white	<b>5.04.665.522/5520</b>
1-module	yes	dark grey/-	colourless/white	<b>5.04.665.528/5520</b>
1-module	yes	charcoal grey/-	colourless/white	<b>5.04.665.521/5520</b>
1-module	yes	light grey/-	colourless/white	<b>5.04.665.530/5520</b>

Supplied as single parts: Mat lens, legend insert, diffuser foil, keycap body.  
Other colours on request.

### Keycap for RS 76, illuminated, with nail protection and legend insert



Pict.: light grey, yellow lens

Size of keycap	Illuminable	Colour of keycap / legending	Colour of lens / l egend insert	Order no. complete
1-module	yes	light beige/-	colourless/white	<b>5.04.665.912/5520</b>
1-module	yes	dark grey/-	colourless/white	<b>5.04.665.918/5520</b>
1-module	yes	charcoal grey/-	colourless/white	<b>5.04.665.911/5520</b>
1-module	yes	light grey/-	colourless/white	<b>5.04.665.920/5520</b>

Supplied as single parts: Mat lens, legend insert, keycap body.  
Other colours on request.

### Keycap for RS 76, illuminated, with legend insert



Pict.: red

Size of keycap	Illuminable	Colour of keycap / legending	Colour of lens / legend insert	Order no. complete
1-module	yes	light beige/-	colourless/white	<b>5.04.665.162/5520</b>
1-module	yes	dark grey/-	colourless/white	<b>5.04.665.168/5520</b>
1-module	yes	charcoal grey/-	colourless/white	<b>5.04.665.161/5520</b>
1-module	yes	light grey/-	colourless/white	<b>5.04.665.170/5520</b>

Supplied as single parts: Mat lens, legend insert, diffuser foil, keycap body.  
Other colours on request.

### Keycap, fully illuminated, for RS 76 MX



Size of keycap	Illuminable	Colour of keycap / legending	Colour of lens / legend insert	Order no. complete
1-module	yes	white/-	white translucent/-	5.05.511.168/0209
1-module	yes	light grey/-	white translucent/-	5.05.511.168/0754
1¼-tlg	yes	white/-	white translucent/-	5.05.511.169/0209
1½-tlg	yes	white/-	white translucent/-	5.05.511.170/0209
1¾-tlg	yes	white/-	white translucent/-	5.05.511.171/0209
1¼-module with light conductor	yes	white/-	white translucent/-	5.05.511.173/0209
5-module	yes	light grey/-	white translucent/-	5.00.888.171/0000

Laser-printed versions available on request.

### Keycaps for RS 76, with legend, two-shot moulded/keycap sets



### Keycap set for RS 76, symbols A-Z



A	B	C	D	E	F	G	H	I	J	K	L	M
N	O	P	Q	R	S	T	U	V	W	X	Y	Z

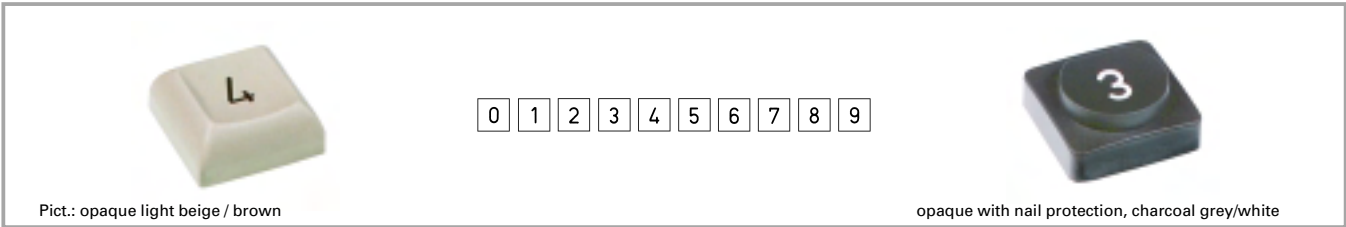


opaque with nail protection, light beige/brown

Size of keycap	Form of lens	Colour of keycap / legending	Symbol	Order no. complete
1-module	keycap opaque with nail protection	light beige/brown	A-Z	<b>5.00.999.501/0000</b>
1-module	keycap opaque with nail protection	dark grey/white	A-Z	<b>5.00.999.502/0000</b>
1-module	keycap opaque with nail protection	charcoal grey/white	A-Z	<b>5.00.999.500/0000</b>
1-module	keycap opaque with nail protection	light grey/black	A-Z	<b>5.00.999.824/0000</b>
1-module	keycap opaque	light beige/brown	A-Z	<b>5.00.999.526/0000</b>
1-module	keycap opaque	dark grey/white	A-Z	<b>5.00.999.527/0000</b>
1-module	keycap opaque	charcoal grey/white	A-Z	<b>5.00.999.525/0000</b>
1-module	keycap opaque	light grey/black	A-Z	<b>5.00.999.825/0000</b>

**RS 76 full-travel keyswitches**

**Keycap set for RS 76, symbols 0-9**

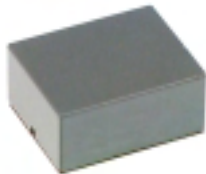


Size of keycap	Form of lens	Colour of keycap / l egending	Symbol	Order no. complete
1-module	keycap opaque with nail protection	light beige/brown	0-9	<b>5.00.999.505/0000</b>
1-module	keycap opaque with nail protection	dark grey/white	0-9	<b>5.00.999.506/0000</b>
1-module	keycap opaque with nail protection	charcoal grey/white	0-9	<b>5.00.999.504/0000</b>
1-module	keycap opaque with nail protection	light grey/black	0-9	<b>5.00.999.826/0000</b>
1-module	keycap opaque	light beige/brown	0-9	<b>5.00.999.530/0000</b>
1-module	keycap opaque	dark grey/white	0-9	<b>5.00.999.531/0000</b>
1-module	keycap opaque	charcoal grey/white	0-9	<b>5.00.999.529/0000</b>
1-module	keycap opaque	light grey/black	0-9	<b>5.00.999.827/0000</b>

### RS 76 accessories



Pict.: light beige

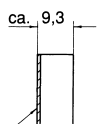
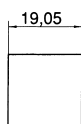


dark grey

### Cover for RS 76 IP40



Pict.: light beige



Klebeband/Adhesive Tape

Short text	Feature 1	Feature 2	Order no.
Cover for RS 76 IP40, 1/4-module, black	black	1/4-module	5.04.520.171/0103
Cover for RS 76 IP40, 1/4-module, charcoal grey	charcoal grey	1/4-module	<b>5.04.520.171/0152</b>
Cover for RS 76 IP40, 1/4-module, light grey	light grey	1/4-module	<b>5.04.520.171/0242</b>
Cover for RS 76 IP40, 1/4-module, light beige	light beige	1/4-module	<b>5.04.520.171/0710</b>
Cover for RS 76 IP40, 1/4-module, light grey	light grey	1/4-module	5.04.520.171/0754
Cover for RS 76 IP40, 1/4-module, dark grey	dark grey	1/4-module	<b>5.04.520.171/0801</b>
Cover for RS 76 IP40, 1/2-module, black	black	1/2-module	5.04.520.172/0103
Cover for RS 76 IP40, 1/2-module, charcoal grey	charcoal grey	1/2-module	<b>5.04.520.172/0152</b>
Cover for RS 76 IP40, 1/2-module, light grey	light grey	1/2-module	<b>5.04.520.172/0242</b>
Cover for RS 76 IP40, 1/2-module, light beige	light beige	1/2-module	<b>5.04.520.172/0710</b>
Cover for RS 76 IP40, 1/2-module, light grey	light grey	1/2-module	5.04.520.172/0754
Cover for RS 76 IP40, 1/2-module, dark grey	dark grey	1/2-module	<b>5.04.520.172/0801</b>
Cover for RS 76 IP40, 3/4-module, black	black	3/4-module	5.04.520.173/0103
Cover for RS 76 IP40, 3/4-module, charcoal grey	charcoal grey	3/4-module	<b>5.04.520.173/0152</b>
Cover for RS 76 IP40, 3/4-module, light grey	light grey	3/4-module	<b>5.04.520.173/0242</b>

## RS 76 full-travel keyswitches

Short text	Feature 1	Feature 2	Order no.
Cover for RS 76 IP40, 3/4-module, light beige	light beige	<sup>3</sup> / <sub>4</sub> -module	<b>5.04.520.173/0710</b>
Cover for RS 76 IP40, 3/4-module, light grey	light grey	<sup>3</sup> / <sub>4</sub> -module	5.04.520.173/0754
Cover for RS 76 IP40, 3/4-module, dark grey	dark grey	<sup>3</sup> / <sub>4</sub> -module	<b>5.04.520.173/0801</b>
Cover for RS 76 IP40, 1-module, black	black	1-module	5.04.520.174/0103
Cover for RS 76 IP40, 1-module, charcoal grey	charcoal grey	1-module	<b>5.04.520.174/0152</b>
Cover for RS 76 IP40, 1-module, light grey	light grey	1-module	<b>5.04.520.174/0242</b>
Cover for RS 76 IP40, 1-module, light beige	light beige	1-module	<b>5.04.520.174/0710</b>
Cover for RS 76 IP40, 1-module, light grey	light grey	1-module	5.04.520.174/0754
Cover for RS 76 IP40, 1-module, dark grey	dark grey	1-module	<b>5.04.520.174/0801</b>