



SAW filters for infrastructure systems

Series/Type: **B4063**

The following products presented in this data sheet are being withdrawn.

Ordering Code	Substitute Product	Date of Withdrawal	Deadline Last Orders	Last Shipments
B39931B4063U810		2009-09-25	2009-12-31	2010-03-31

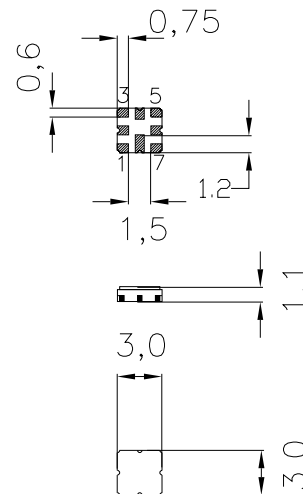
For further information please contact your nearest EPCOS sales office, which will also support you in selecting a suitable substitute. The addresses of our worldwide sales network are presented at www.epcos.com/sales.


 Ceramic package **QCC8D**
Features

- Compact RF duplexer for cordless telephone ISM
- No matching network required for operation at 50 Ω
- Ceramic package for **Surface Mounted Technology (SMT)**

Terminals

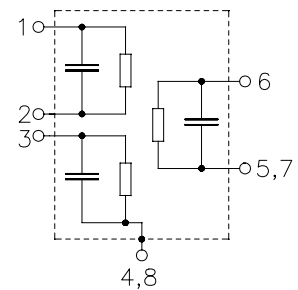
- Ni , gold-plated



Dimensions in mm, approx. weight 0,037 g

Pin configuration

6	Ant
1	Tx
3	Rx
5, 7	Ant - ground
2	Tx - ground
4,8	Case / Rx - ground



Type	Ordering code	Marking and Package according to	Packing according to
B4063	B39931-B4063-U810	C61157-A7-A72-X-27	F61074-V8101-Z000

Electrostatic Sensitive Device (ESD)

Maximum ratings

Operable temperature range	T	- 10/+ 55	°C	
Storage temperature range	T_{stg}	- 40/+ 85	°C	
DC voltage	V_{DC}	5	V	
Input power	P_{IN}	5	dBm	


Characteristics Tx - Ant

 Operable temperature range $T_A = -10$ to 55 °C

 Ant term. impedance $Z_{Ant} = 50$ Ω

 Port 1 term. impedance $Z_{Port 1} = 50$ Ω

 Port 2 term. impedance $Z_{Port 2} = 50$ Ω

		min.	typ.	max.	
Center frequency	f_c	—	926,25	—	MHz
Maximum insertion attenuation	α_{max}	—	3,0	3,6	dB
924,40 ... 928,10 MHz					
Amplitude ripple (p-p)	$\Delta\alpha$	—	0,4	1,5	dB
924,40 ... 928,10 MHz					
Absolute attenuation	α				
450,00 ... 906,20 MHz		30	34	—	dB
946,30 ... 970,00 MHz		25	31	—	dB
970,00 ... 3500,00 MHz		30	39	—	dB


Characteristics Rx - Ant

 Operable temperature range $T_A = -10$ to 55 °C

 Ant term. impedance $Z_{Ant} = 50$ Ω

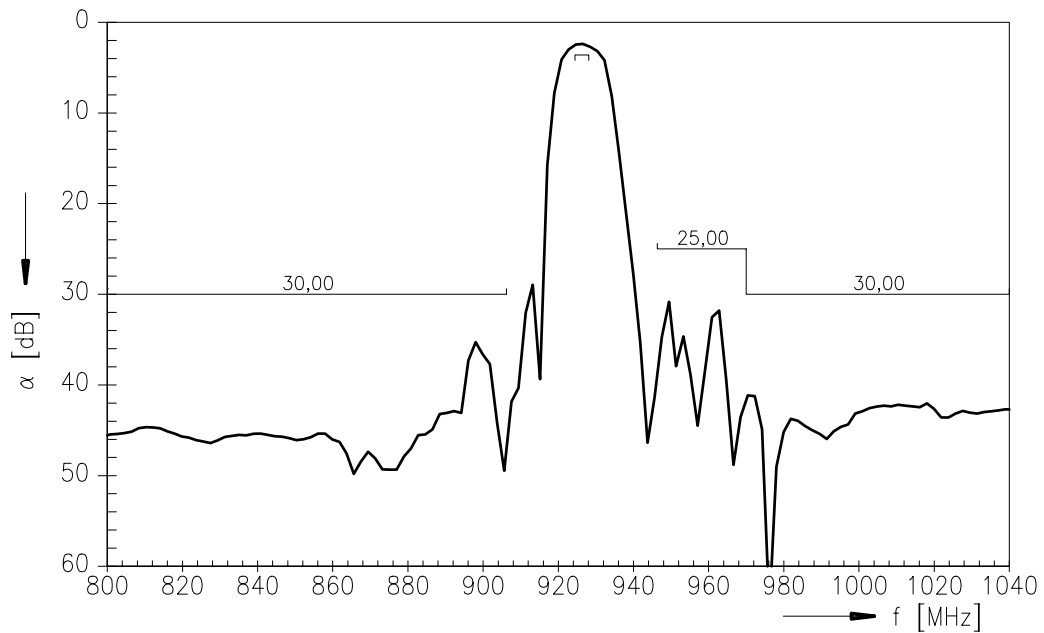
 Port 1 term. impedance $Z_{Port 1} = 50$ Ω

 Port 2 term. impedance $Z_{Port 2} = 50$ Ω

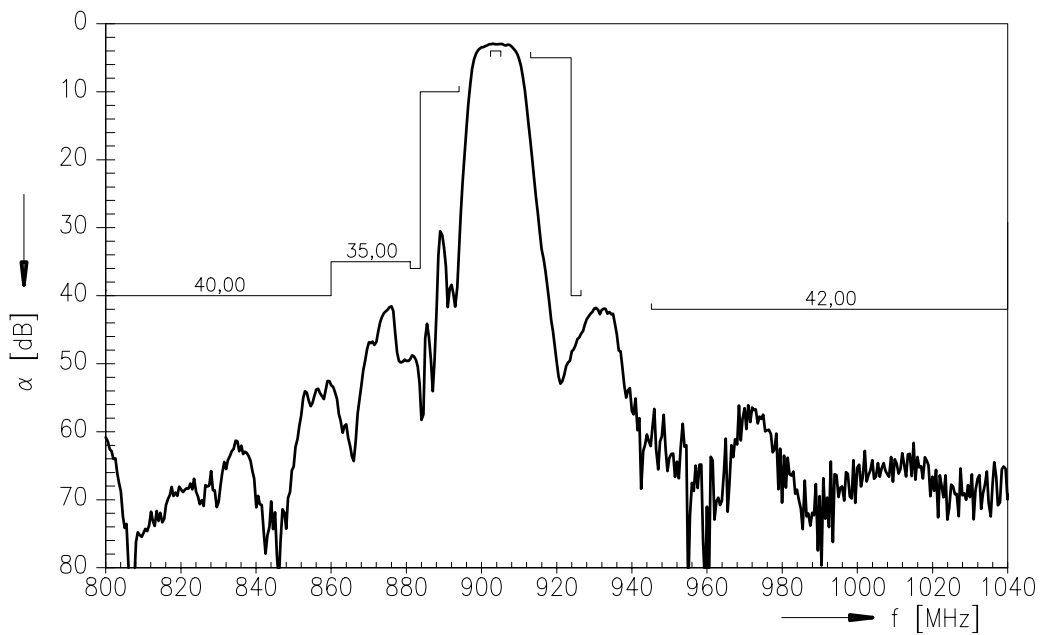
		min.	typ.	max.	
Center frequency	f_c	—	903,75	—	MHz
Maximum insertion attenuation	α_{max}	—	3,1	4,0	dB
	902,40 ... 905,10 MHz				
Amplitude ripple (p-p)	$\Delta\alpha$	—	0,2	1,5	dB
	902,40 ... 905,10 MHz				
Absolute attenuation	α				
	450,00 ... 860,00 MHz	40	52	—	dB
	860,00 ... 881,00 MHz	35	42	—	dB
	881,00 ... 883,70 MHz	36	45	—	dB
	883,70 ... 894,00 MHz	10	30	—	dB
	913,10 ... 923,80 MHz	5	18	—	dB
	923,80 ... 926,50 MHz	40	45	—	dB
	945,20 ... 1600,00 MHz	42	48	—	dB
	1600,00 ... 2000,00 MHz	30	35	—	dB



Frequency response Tx :

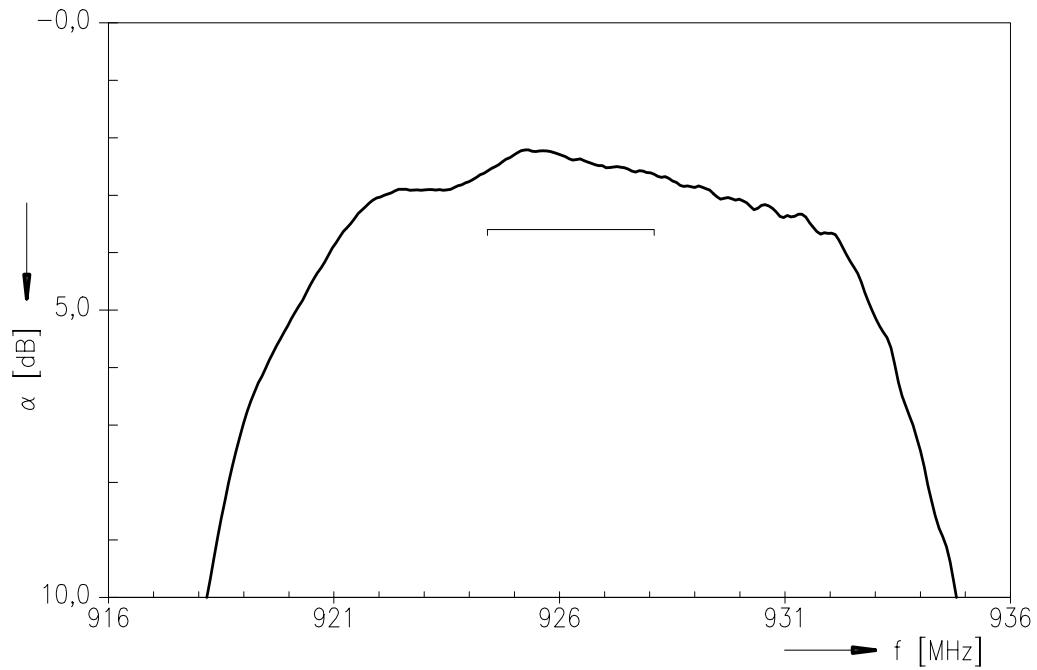


Frequency response Rx :

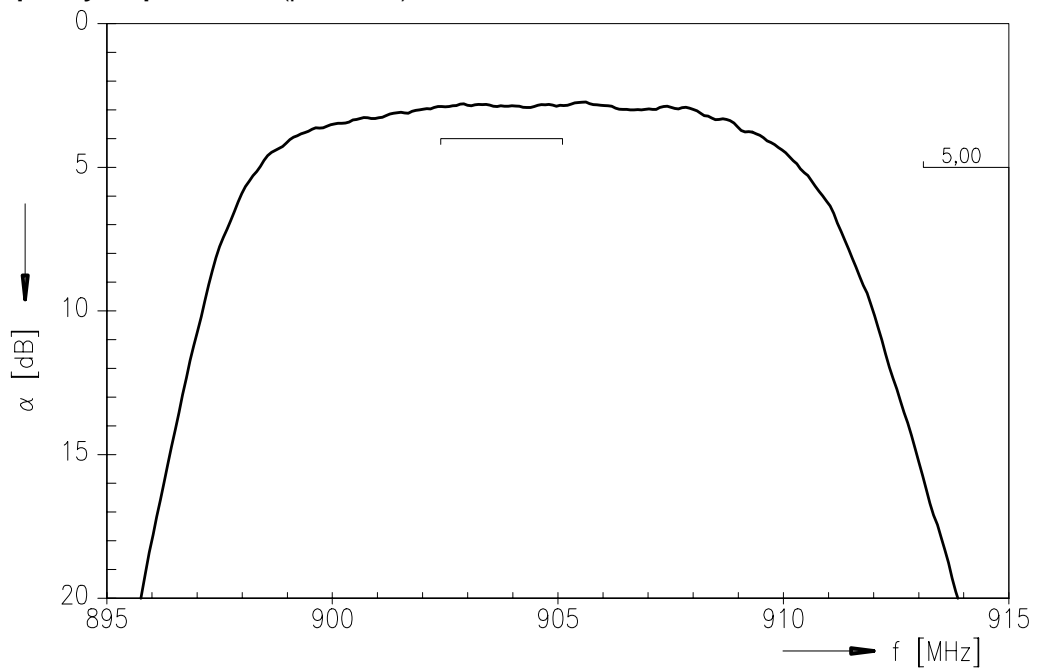




Frequency response Tx : (passband)

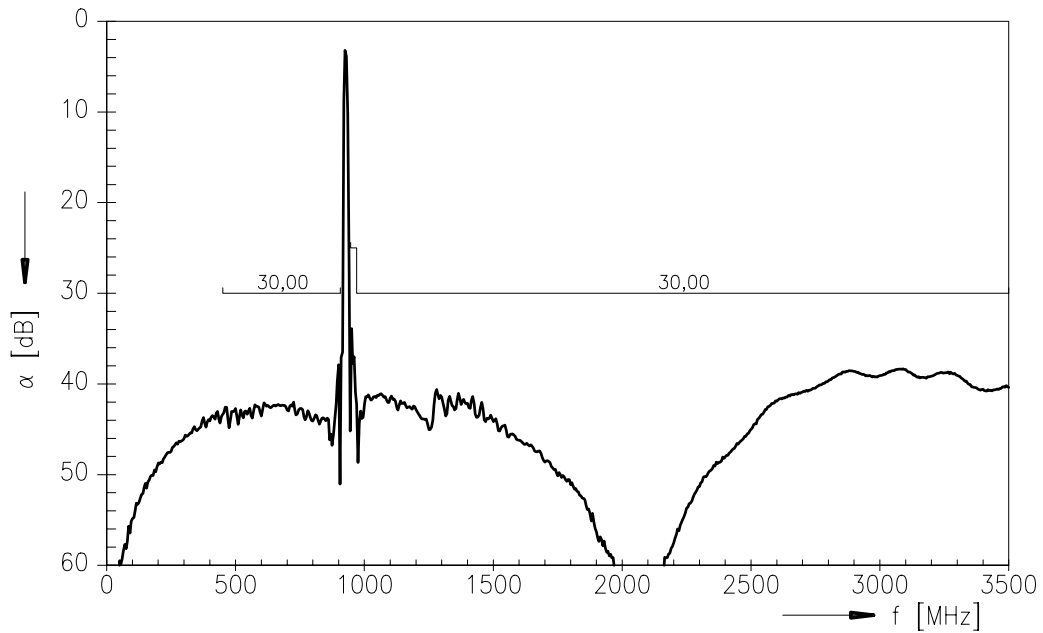


Frequency response Rx : (passband)

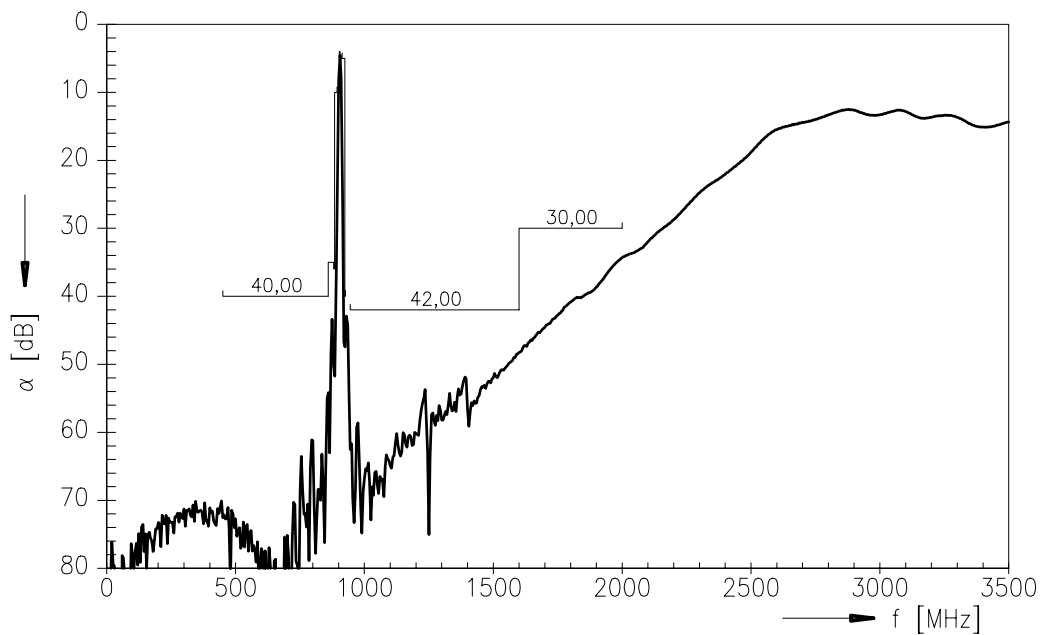




Frequency response Tx : (wideband)



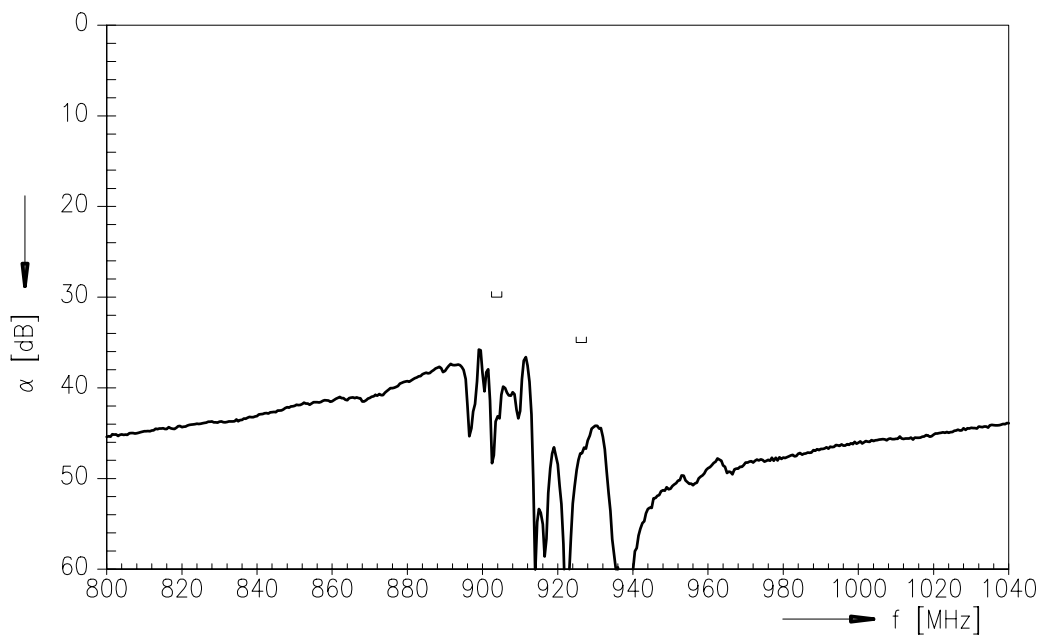
Frequency response Rx : (wideband)




Isolation between Tx and Rx

Operating temperature range $T = -10$ to 55 °C
 Ant term. impedance $Z_{Ant} = 50$ Ω
 Port 1 term. impedance $Z_{Port 1} = 50$ Ω
 Port 2 term. impedance $Z_{Port 2} = 50$ Ω

		min.	typ.	max.	
Absolute attenuation	α				
	924,40 ... 928,10 MHz	35	44	—	dB
	902,40 ... 905,10 MHz	30	38	—	dB

Isolation between Tx and Rx :




Published by EPCOS AG

Surface Acoustic Wave Components Division, SAW MC WT

P.O. Box 80 17 09, D-81617 München

© EPCOS AG 2000. All Rights Reserved.

As far as patents or other rights of third parties are concerned, liability is only assumed for components per se, not for applications, processes and circuits implemented within components or assemblies.

The information describes the type of component and shall not be considered as assured characteristics.

Terms of delivery and rights to change design reserved.

For questions on technology, prices and delivery please contact the sales offices of EPCOS AG or the international representatives.

Due to technical requirements components may contain dangerous substances. For information on the type in question please also contact one of our sales offices.