



# SAW Components

Data Sheet R 883

Data Sheet

A large, stylized, 3D-rendered graphic of the word "EPCOS" in a light gray, sans-serif font. The letters are tilted and appear to be floating or emerging from a dark, textured background that resembles a globe or a complex circuit board. The overall effect is a sense of depth and modernity.



## SAW Components

R 883

## Resonator

315,15 MHz

### Data Sheet

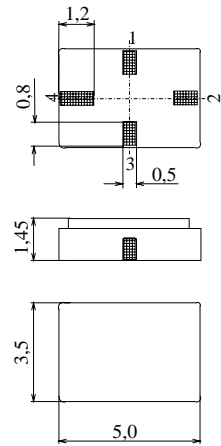
Ceramic package **QCC4A**

#### Features

- 1-port resonator
- Provides reliable, fundamental mode, quartz frequency stabilization i.e. in transmitters or local oscillators
- Protection layer: Elpas

#### Terminals

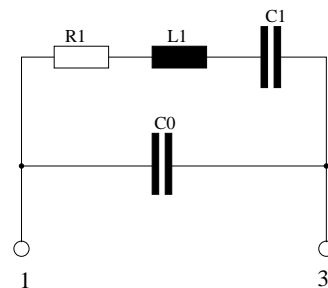
- Ni, gold plated



Dimensions in mm, approx. weight 0,1 g

#### Pin configuration

- |     |                                  |
|-----|----------------------------------|
| 1   | Input                            |
| 3   | Output, grounded in 1-port conf. |
| 2,4 | Ground (case)                    |



Type	Ordering code	Marking and Package according to	Packing according to
R 883	B39321-R 883-H210	C61157-A7-A86	F61074-V8175-Z000

Electrostatic Sensitive Device (ESD)

#### Maximum ratings

Operable temperature range	$T_A$	-40/+125	°C	between any terminals
Storage temperature range	$T_{stg}$	-40/+125	°C	
DC voltage	$V_{DC}$	12	V	
Source power	$P_s$	0	dBm	



## SAW Components

R 883

### Resonator

315,15 MHz

#### Data Sheet

#### Characteristics

Reference temperature:  $T_A = 25\text{ °C}$   
Terminating source impedance:  $Z_S = 50\ \Omega$   
Terminating load impedance:  $Z_L = 50\ \Omega$

		min.	typ.	max.	
<b>Center frequency</b> <sup>1)</sup>	$f_c$	315,05	315,15	315,25	MHz
<b>Minimum insertion attenuation</b>	$\alpha_{\min}$	—	1,5	1,9	dB
Unloaded quality factor	$Q_U$	9600	12800	—	
<b>Ageing of <math>f_c</math></b>		—	—	-50/+50	ppm
<b>Equivalent circuit elements</b>					
Motional capacitance	$C_1$	—	2,19	—	fF
Motional inductance	$L_1$	—	116,5	—	$\mu\text{H}$
Motional resistance	$R_1$	—	18	24	$\Omega$
Parallel capacitance <sup>2)</sup>	$C_0$	—	2,60	—	pF
<b>Temperature coefficient of frequency</b> <sup>3)</sup>	$TC_f$	—	-0,032	—	ppm/K <sup>2</sup>
<b>Turnover temperature</b>	$T_0$	20	—	50	°C

<sup>1)</sup> Center frequency is defined as maximum of the real part of the admittance

<sup>2)</sup> If used in two port configuration (pin 1-input, pin 3-output)  $C_0$  is reduced by approx. 0,3 pF.

<sup>3)</sup> Temperature dependence of  $f_c$ :  $f_c(T_A) = f_c(T_0)(1 + TC_f(T_A - T_0)^2)$



<b>SAW Components</b>	<b>R 883</b>
<b>Resonator</b>	<b>315,15 MHz</b>

Data Sheet

**Published by EPCOS AG**

**Surface Acoustic Wave Components Division, SAW CE AE PD**

**P.O. Box 80 17 09, D-81617 München**

© EPCOS AG 2004. All Rights Reserved. Reproduction, publication and dissemination of this brochure and the information contained therein without EPCOS' prior express consent is prohibited.

The information contained in this brochure describes the type of component and shall not be considered as guaranteed characteristics. Purchase orders are subject to the General Conditions for the Supply of Products and Services of the Electrical and Electronics Industry recommended by the ZVEI (German Electrical and Electronic Manufacturers' Association), unless otherwise agreed.

This brochure replaces the previous edition.

For questions on technology, prices and delivery please contact the Sales Offices of EPCOS AG or the international Representatives.

Due to technical requirements components may contain dangerous substances. For information on the type in question please also contact one of our Sales Offices.