

FST34X2245

32-Bit Bus Switch with 25Ω Series Resistors in Outputs

General Description

The Fairchild Switch FST34X2245 provides 32-bits of high speed CMOS TTL-compatible bus switching in a standard flow-through mode. The low On Resistance of the switch allows inputs to be connected to outputs without adding propagation delay or generating additional ground bounce noise.

The device is organized as a 32-bit switch. When \overline{OE} is LOW, the switch is ON and Port A is connected to Port B. When \overline{OE} is HIGH, the switch is OPEN and a high-impedance state exists between the two ports.

The FST34X2245 has equivalent 25Ω series resistors to reduce signal-reflection noise, eliminating the need for external terminating resistors.

Features

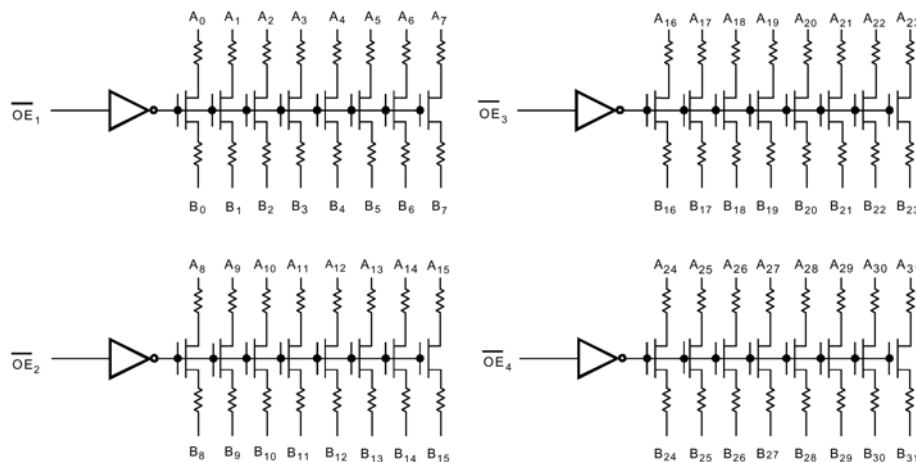
- 25Ω switch connection between two ports
- Minimal propagation delay through the switch
- Low I_{CC}
- Zero bounce in flow-through mode
- Control inputs compatible with TTL level
- 32-bit version of FST32245
- Packaged in 20.5mm 80-lead package

Ordering Code:

| Order Number | Package Number | Package Description |
|-------------------------------|----------------|---|
| FST34X2245QSPX | MQA80A | 80-Lead, QVSOP, JEDEC MO-154, 0.150" Wide |
| FST34X2245QSPX_NL (Note 1) | MQA80A | Pb-Free 80-Lead, QVSOP, JEDEC MO-154, 0.150" Wide |

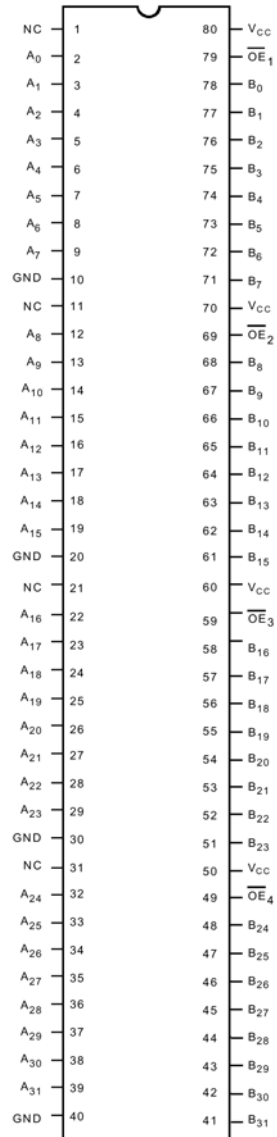
Note 1: "_NL" indicates Pb-Free product (per JEDEC J-STD-020B). Device is available in Tape and Reel only.

Logic Diagram



FST34X2245 32-Bit Bus Switch with 25Ω Series Resistors in Outputs

Connection Diagram



Pin Descriptions

| Pin Name | Description |
|-----------------|-------------------|
| OE _n | Bus Switch Enable |
| A _n | Bus A |
| B _n | Bus B |
| NC | No Connect |

Function Table

| Input OE _n | Function |
|-----------------------|------------|
| L | Connect |
| H | Disconnect |

Absolute Maximum Ratings(Note 2)

| | |
|---|------------------|
| Supply Voltage (V_{CC}) | −0.5V to +7.0V |
| DC Switch Voltage (V_S) | −0.5V to +7.0V |
| DC Input Voltage (V_{IN}) (Note 3) | −0.5V to +7.0V |
| DC Input Diode Current (I_{IK}) $V_{IN} < 0V$ | −50mA |
| DC Output (I_{OUT}) Sink Current | 128mA |
| DC V_{CC} /GND Current (I_{CC}/I_{GND}) | +/- 100mA |
| Storage Temperature Range (T_{STG}) | −65°C to +150 °C |

Recommended Operating Conditions (Note 4)

| | |
|--|------------------|
| Power Supply Operating (V_{CC}) | 4.0V to 5.5V |
| Input Voltage (V_{IN}) | 0V to 5.5V |
| Output Voltage (V_{OUT}) | 0V to 5.5V |
| Input Rise and Fall Time (t_r, t_f) | |
| Switch Control Input | 0 ns/V to 5 ns/V |
| Switch I/O | 0 ns/V to DC |
| Free Air Operating Temperature (T_A) | −40 °C to +85 °C |

Note 2: The Absolute Maximum Ratings are those values beyond which the safety of the device cannot be guaranteed. The device should not be operated at these limits. The parametric values defined in the Electrical Characteristics tables are not guaranteed at the absolute maximum rating. The "Recommended Operating Conditions" table will define the conditions for actual device operation.

Note 3: The input and output negative voltage ratings may be exceeded if the input and output diode current ratings are observed.

Note 4: Unused control inputs must be held HIGH or LOW. They may not float.

DC Electrical Characteristics

| Symbol | Parameter | V_{CC} (V) | $T_A = -40\text{ °C to }+85\text{ °C}$ | | | Units | Conditions |
|-----------------|--|-----------------|--|-----------------|------|-------|--|
| | | | Min | Typ (Note 5) | Max | | |
| V_{IK} | Clamp Diode Voltage | 4.5 | | | −1.2 | V | $I_{IN} = -18\text{ mA}$ |
| V_{IH} | HIGH Level Input Voltage | 4.0–5.5 | 2.0 | | | V | |
| V_{IL} | LOW Level Input Voltage | 4.0–5.5 | | | 0.8 | V | |
| I_I | Input Leakage Current | 5.5 | | | ±1.0 | μA | $0 \leq V_{IN} \leq 5.5V$ |
| | | 0 | | | 10 | μA | $V_{IN} = 5.5V$ |
| I_{OZ} | OFF-STATE Leakage Current | 5.5 | | | ±1.0 | μA | $0 \leq A, B \leq V_{CC}$ |
| R_{ON} | Switch On Resistance (Note 6) | 4.5 | 20 | 26 | 38 | Ω | $V_{IN} = 0V, I_{IN} = 64\text{ mA}$ |
| | | 4.5 | 20 | 27 | 40 | Ω | $V_{IN} = 0V, I_{IN} = 30\text{ mA}$ |
| | | 4.5 | 20 | 28 | 48 | Ω | $V_{IN} = 2.4V, I_{IN} = 15\text{ mA}$ |
| | | 4.0 | 20 | 30 | 48 | Ω | $V_{IN} = 2.4V, I_{IN} = 15\text{ mA}$ |
| I_{CC} | Quiescent Supply Current (Note 7) | 5.5 | | | 3 | μA | $V_{IN} = V_{CC}$ or GND, $I_{OUT} = 0$ |
| ΔI_{CC} | Increase in I_{CC} per Input (Note 8) | 5.5 | | | 2.5 | mA | One Input at 3.4V Other Inputs at V_{CC} or GND |

Note 5: Typical values are at $V_{CC} = 5.0V$ and $T_A = +25\text{ °C}$

Note 6: Measured by the voltage drop between A and B pins at the indicated current through the switch. On Resistance is determined by the lower of the voltages on the two (A or B) pins.

Note 7: Per V_{CC} pin.

Note 8: Per TTL input, control pins only.

AC Electrical Characteristics

| Symbol | Parameter | T _A = -40 °C to +85 °C, C _L = 50pF, R _U = R _D = 500Ω | | | | Units | Conditions | Figure Number |
|-------------------------------------|--|---|------|------------------------|------|-------|--|---------------|
| | | V _{CC} = 4.5 – 5.5V | | V _{CC} = 4.0V | | | | |
| | | Min | Max | Min | Max | | | |
| t _{PHL} , t _{PLH} | Propagation Delay Bus to Bus (Note 9) | | 1.25 | | 1.25 | ns | V _I = OPEN | Figures 1, 2 |
| t _{PZH} , t _{PZL} | Output Enable Time | 1.0 | 5.9 | | 6.4 | ns | V _I = 7V for t _{PZL} V _I = OPEN for t _{PZH} | Figures 1, 2 |
| t _{PHZ} , t _{PLZ} | Output Disable Time | 1.0 | 6.0 | | 5.7 | ns | V _I = 7V for t _{PLZ} V _I = OPEN for t _{PHZ} | Figures 1, 2 |

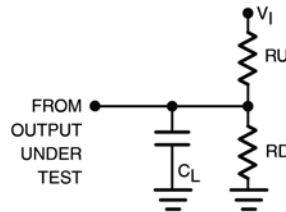
Note 9: This parameter is guaranteed by design but is not tested. The bus switch contributes no propagation delay other than the RC delay of the typical On Resistance of the switch and the 50pF load capacitance, when driven by an ideal voltage the source (zero output impedance).

Capacitance (Note 10)

| Symbol | Parameter | Typ | Max | Units | Conditions |
|----------|-------------------------------|-----|-----|-------|---------------------------------------|
| C_{IN} | Control Pin Input Capacitance | 3 | | pF | $V_{CC} = 5.0\text{V}$ |
| C_{IO} | Input/Output Capacitance | 5 | | pF | $V_{CC}, \overline{OE} = 5.0\text{V}$ |

Note 10: $T_A = +25\text{ }^{\circ}\text{C}$, $f = 1\text{ MHz}$, Capacitance is characterized but not tested.

AC Loading and Waveforms



Note: Input driven by 50Ω source terminated in 50Ω

Note: C_L includes load and stray capacitance

Note: Input PRR = 1.0 MHz $t_W = 500\text{ ns}$

FIGURE 1. AC Test Circuit

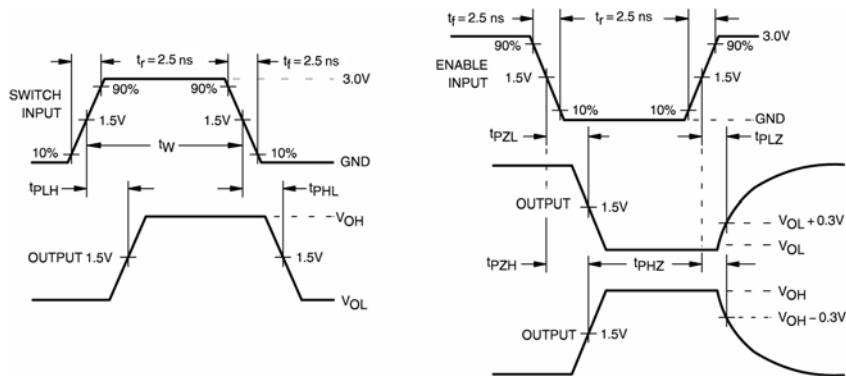
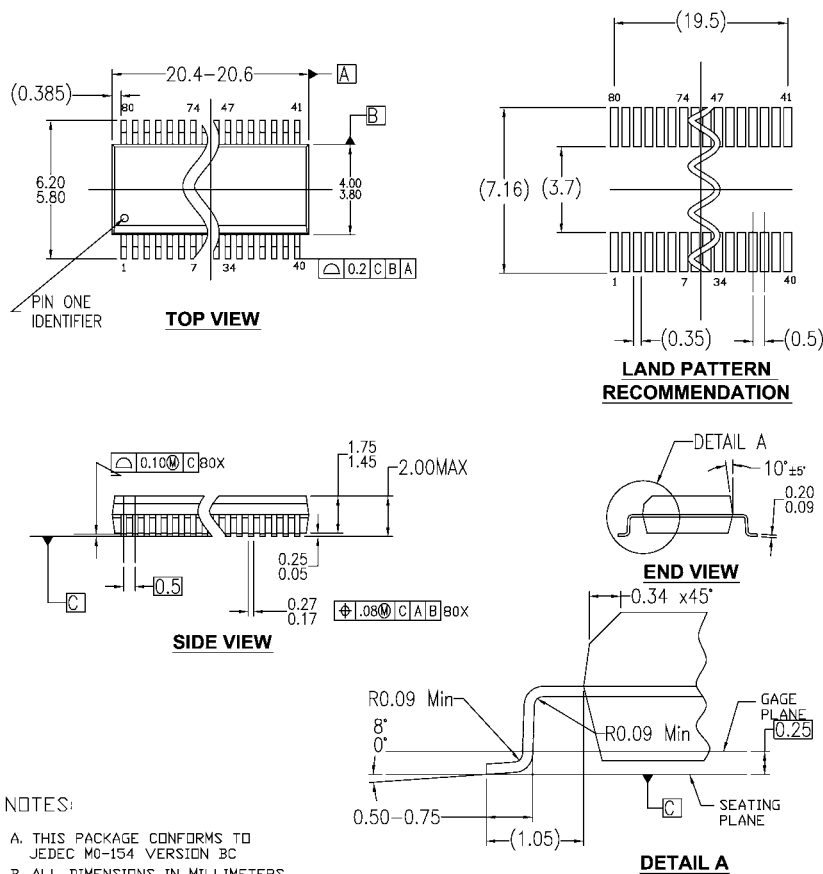


FIGURE 2. AC Waveforms

Physical Dimensions inches (millimeters) unless otherwise noted



NOTES:

- THIS PACKAGE CONFORMS TO JEDEC MO-154 VERSION 8C
- ALL DIMENSIONS IN MILLIMETERS
- DRAWING CONFORMS TO ASME Y14.5M-1994
- DIMENSIONS ARE EXCLUSIVE OF BURRS, MOLD FLASH, AND TIE BAR EXTRUSIONS.

MQA80AREVA

80-Lead, QVSOP, JEDEC MO-154, 0.150" Wide Package Number MQA80A

Fairchild does not assume any responsibility for use of any circuitry described, no circuit patent licenses are implied and Fairchild reserves the right at any time without notice to change said circuitry and specifications.

LIFE SUPPORT POLICY

FAIRCHILD'S PRODUCTS ARE NOT AUTHORIZED FOR USE AS CRITICAL COMPONENTS IN LIFE SUPPORT DEVICES OR SYSTEMS WITHOUT THE EXPRESS WRITTEN APPROVAL OF THE PRESIDENT OF FAIRCHILD SEMICONDUCTOR CORPORATION. As used herein:

- Life support devices or systems are devices or systems which, (a) are intended for surgical implant into the body, or (b) support or sustain life, and (c) whose failure to perform when properly used in accordance with instructions for use provided in the labeling, can be reasonably expected to result in a significant injury to the user.
- A critical component in any component of a life support device or system whose failure to perform can be reasonably expected to cause the failure of the life support device or system, or to affect its safety or effectiveness.

www.fairchildsemi.com