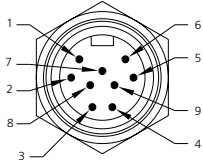
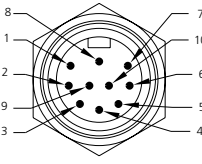
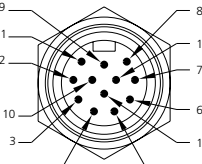




Receptacles

#16 AWG PVC 12-inch leads - U.S. color code, epoxy potted
 Black epoxy coat zinc diecast shell design
 Use in control panels, junction boxes and sensors

	9P	10P	12P
MALE FACE VIEW			
COLOR CODE	1- orange 6- red 2- blue 7- green-gnd 3- red-black trace 8- white-black trace 4- green-black trace 9- black 5- white	1- orange 6- orange-black trace 2- blue 7- red 3- white-black trace 8- green-gnd 4- red 9- black 5- green-black trace 10- white	1- orange 7- blue-black trace 2- blue 8- black-white trace 3- white-black trace 9- green-gnd 4- red-black trace 10- red 5- green-black trace 11- white 6- orange-black trace 12- black
VOLTAGE	600V AC/DC	600V AC/DC	600V AC/DC
CURRENT	7A	7A	5A
CONDUCTOR	#16-9	#16-10	#16-12

MALE	FIG	RECEPTACLES WITH #16 AWG PVC LEADS 12 INCHES LONG		
STRAIGHT WITH 1/2" -14NPT	2	3R9006A20A120	3R1006A20A120	3R2006A20A120
FEMALE	FIG	RECEPTACLES WITH #16 AWG PVC LEADS 12 INCHES LONG		
STRAIGHT WITH 1/2" -14NPT	1	3R9004A20A120	3R1004A20A120	3R2004A20A120

PART NO.	ACCESSORIES
5601	Locknut 1/2" -14NPT, zinc plated steel
5611	Gasket, black neoprene

CATALOG OPTIONS

Use the following chart to modify your part's specifications

3R9004A20A1201

LEAD LENGTH

3' F030
 6' F060

COUPLING NUT

STAINLESS STEEL SHELL .ADD 1

Specifications



MECHANICAL

SHELL: ZINC DIECAST W/ BLACK EPOXY COAT, OPTIONAL STAINLESS STEEL TYPE 303

INSERT: PVC - UL STD 94 - V0
CONDUCTORS: #16 AWG, PVC INSULATION OVER 26 X #30 COPPER STRANDING, 600V, UL STYLE 1015 CSA TEW

ELECTRICAL

VOLTAGE RATING: 600 V AC/DC

AMPERAGE:
9P - 7A
10P - 7A
12P - 5A

ENVIRONMENTAL

PROTECTION: IP 68, NEMA 6P

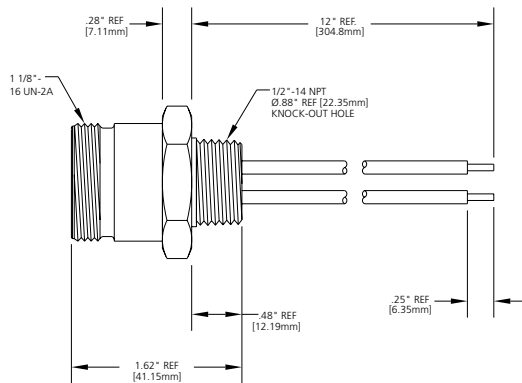
AMBIENT OPERATING TEMP: -4° TO 221° F (-20° TO 105° C)

CERTIFICATIONS

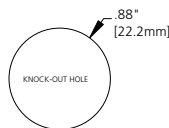
UL: UL RECOGNIZED, FILE NO. E46237
CSA: CSA CERTIFIED, FILE NO. LR6837

RECEPTACLE DIMENSIONS

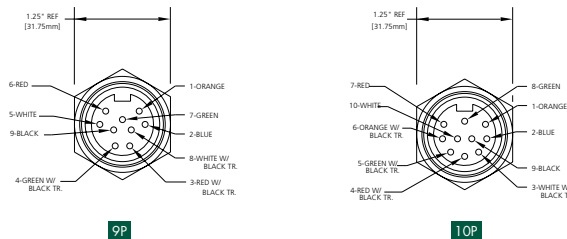
FEMALE STRAIGHT WITH 1/2" - 14NPT



— TYPICAL KNOCKOUT —

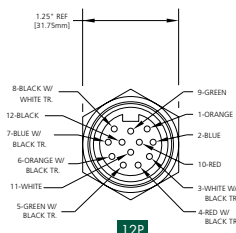


— FEMALE FACE VIEW —



9P

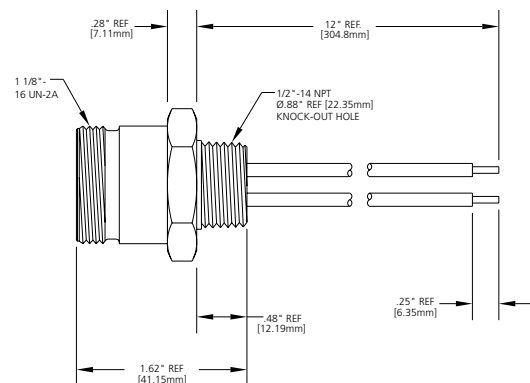
10P



12P

FIG 1

MALE STRAIGHT WITH 1/2" - 14NPT



— TYPICAL KNOCKOUT —

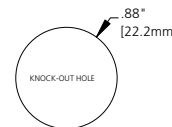


FIG 2