

FEATURES AND SPECIFICATIONS

Features and Benefits

- Suitable for high-speed bus applications
- Fully shielded
- Staggered contact, low mating force
- Leaf-style contacts prevent stubbing
- First-mate/last-break contacts for grounding

Reference Information

Packaging: Tray

Mates With: [52539](#) only

Designed In: Millimeters

Electrical

Voltage: 125V

Current: 0.4A

Contact Resistance: 70mΩ max.

Dielectric Withstanding Voltage: 500V AC

Insulation Resistance: 500 MΩ min.

Mechanical

Durability: 2000 cycles min. (contact Molex for 5000 cycles)

Physical

Housing: White glass-filled LCP, UL 94V-0

Shield Cover: Steel with Nickel plating

Contact: Phosphor Bronze

Plating: 30μ" Gold over Nickel

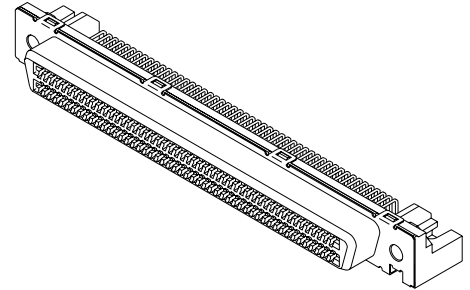
Operating Temperature: -55 to +100°C



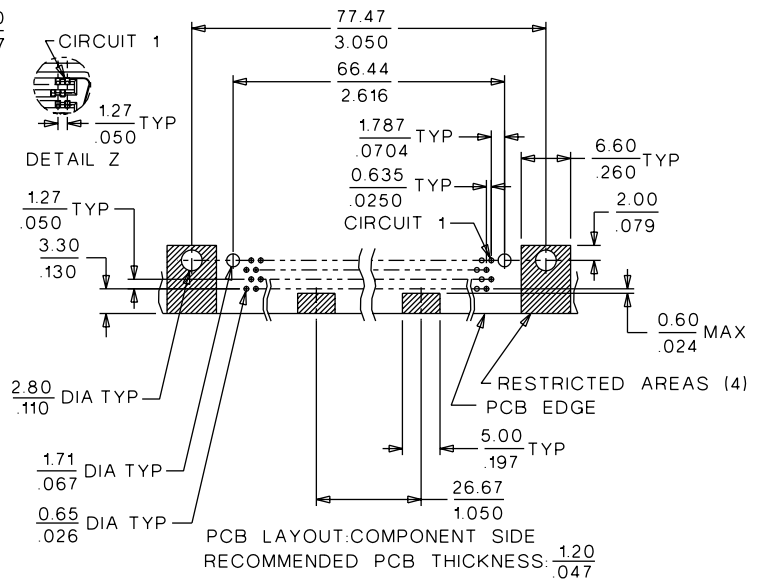
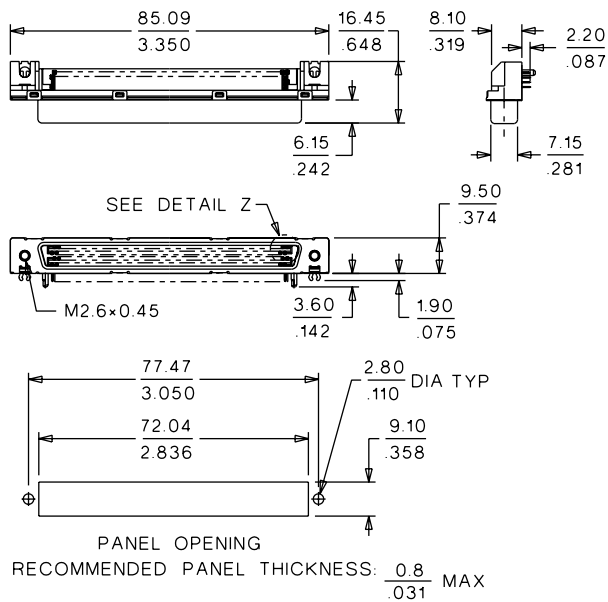
1.27mm (.050") Pitch Docking Station Shielded Receptacle

52537

Right Angle



CATALOG DRAWING (FOR REFERENCE ONLY)



ORDERING INFORMATION

Circuits	Order No.
200	52537-2001

I/O Connectors

N