

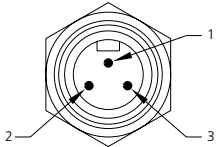
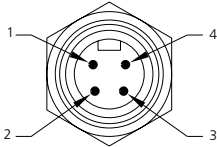
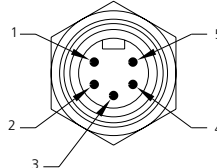


# Receptacles

#18 AWG PVC 12-inch leads - auto color code – epoxy potted

Straight male & female

Low-resistance contact design with gold/palladium nickel plating

	3P	4P	5P
MALE FACE VIEW			
COLOR CODE	1- green-gnd 2- red w/ black trace 3- red w/ white trace	1- red w/ black trace 3- red 2- red w/ white trace 4- green-gnd	1- red w/ white trace 4- red w/ yellow trace 2- red 5- red w/ black trace 3- green-gnd
VOLTAGE	300V AC/DC	300V AC/DC	300V AC/DC
CURRENT	10A	7A	5.6A
CONDUCTOR	#18-3	#18-4	#18-5

MALE	FIG	RECEPTACLES WITH #18 AWG PVC LEADS 12 INCHES LONG		
STRAIGHT	1	1R3006A17A120	1R4006A17A120	1R5006A17A120
FEMALE	FIG	RECEPTACLES WITH #18 AWG PVC LEADS 12 INCHES LONG		
STRAIGHT	2	1R3004A17A120	1R4004A17A120	1R5004A17A120

PART NO.	ACCESSORIES
5601	Locknut 1/2 "-14NPT, zinc plated steel
5611	Gasket, black neoprene

## CATALOG OPTIONS

Use the following chart to modify your part's specifications

# 1R3006A17A120

### CABLE LENGTH

3'	F030
6'	F060

# Specifications



## MECHANICAL

SHELL: ZINC DIECAST W/ BLACK EPOXY COAT, OPTIONAL STAINLESS STEEL TYPE 303

INSERT: PVC - UL STD 94 - V0

CONDUCTORS: #18 AWG, PVC INSULATION OVER 16 X #30 COPPER STRANDING, 300V, UL STYLE 1061, CSA AWM SR

## ELECTRICAL

VOLTAGE RATING: 300 V AC/DC

AMPERAGE: 3P - 10A

4P - 7A

5P - 5.6A

## ENVIRONMENTAL

PROTECTION: IP 68, NEMA 6P

AMBIENT OPERATING TEMP: -4° TO 176° F (-20° TO 80° C)

## CERTIFICATIONS

UL: UL RECOGNIZED, FILE NO. E46237

CSA: CSA CERTIFIED, FILE NO. LR6837

## RECEPTACLE DIMENSIONS

### MALE STRAIGHT WITH 1/2" - 14NPT THREADS

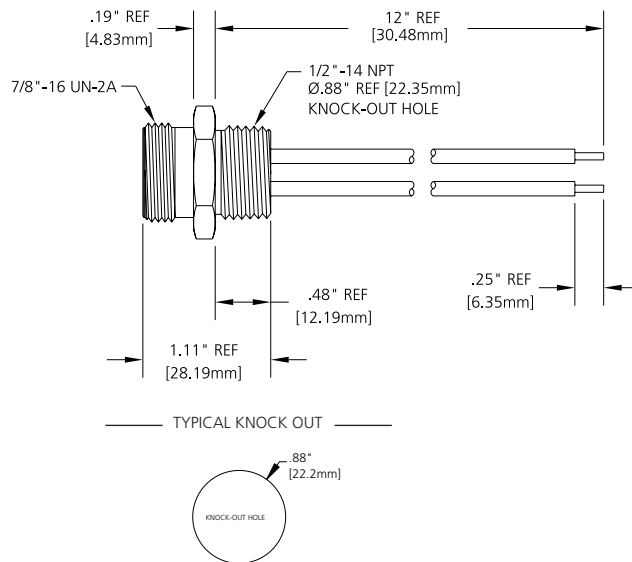


FIG 1

### FEMALE STRAIGHT WITH 1/2" - 14NPT THREADS

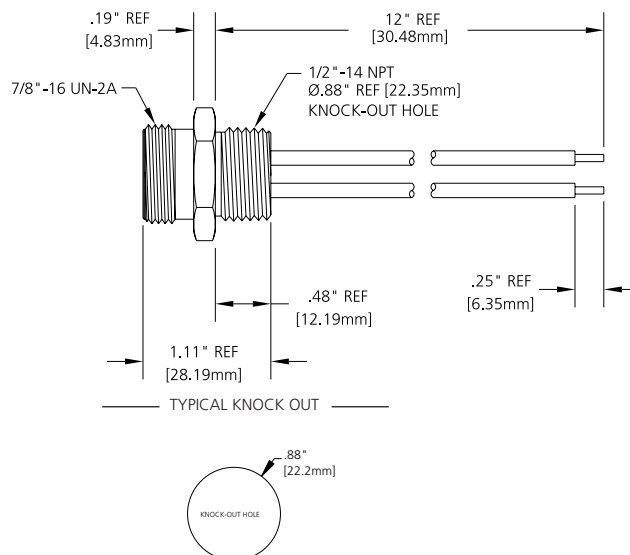


FIG 2

### FEMALE FACE VIEW

