

Specification Status: RELEASED

Max Electrical Rating at 20°C

Operating Voltage: 250V_{DC}

Interrupt Current: 3A_{RMS}

Fault Voltage: 600V_{RMS}

Lead Material: Tin plated brass

Configuration: Two PPTC devices per
TSM600 part

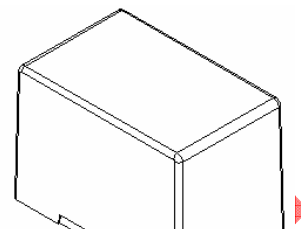
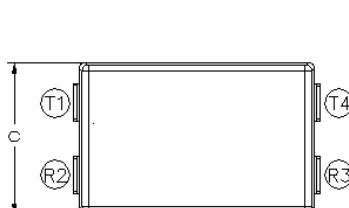
Case Material: Nylon Resin (UL94 V-0)
1000V dielectric rating

Marking:

Raychem Logo
X TSM600 Part Identification
□ □ □ □ Lot Identification

Terminal Description:

T1 = Tip In T4 = Tip Out
R2 = Ring In R3 = Ring Out



Not to be used for new designs.
For new designs please use TSM600-250F

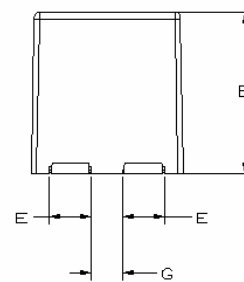
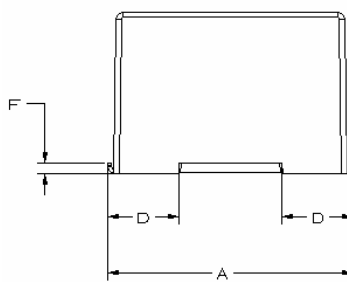


TABLE I. DIMENSIONS:

	A		B		C		D		E		F		G	
mm:	MIN	MAX	MIN	MAX	MIN	MAX	MIN	MAX	MIN	MAX	MIN	MAX	MIN	MAX
in:	(0.671)	(0.691)	(0.440)	(0.460)	(0.410)	(0.440)	(0.187)	(0.203)	(0.099)	(0.111)	(0.022)	(0.038)	(0.087)	(0.122)

TABLE II. PERFORMANCE RATINGS @ 20°C (unless otherwise noted):

IHOLD (A)		RESISTANCE (Ω)** @ 20° C			TIME TO TRIP @ 3 A (Seconds)		OPERATING TEMPERATURE (°C)		Tripped state Power Dissipation @ 250V (Watts) TYPICAL
20°C	60°C	R MIN	R TYP	R ₁ MAX*	TYP	MAX	MIN	MAX	
0.250	0.140	1.0	3.5	7.0	0.8	6	-40	85	2

* Maximum device resistance, measured 1-hour post reflow or post trip.

** Resistance per PPTC device.

Additional Ratings @ 20°C

Resistance Matched: 0.5 Ohm measured 24 hours after
reflow installation

Line Balance: 0.5 Ohm, 59 dB @ 4 kHz minimum***

Storage Temperature: -40° to 85° C

Storage Humidity: Per IPC/JEDEC J-STD-
020A Level 2a

***Tested in accordance with IEEE 455 with a device having a series longitudinal balance value of at least 60dB

Agency Recognition:
Reference Documents:
Precedence:
Effectivity:

UL, CSA
PS300
This specification takes precedence over documents referenced herein.
Reference documents shall be the issue in effect on the date of invitation for bid.