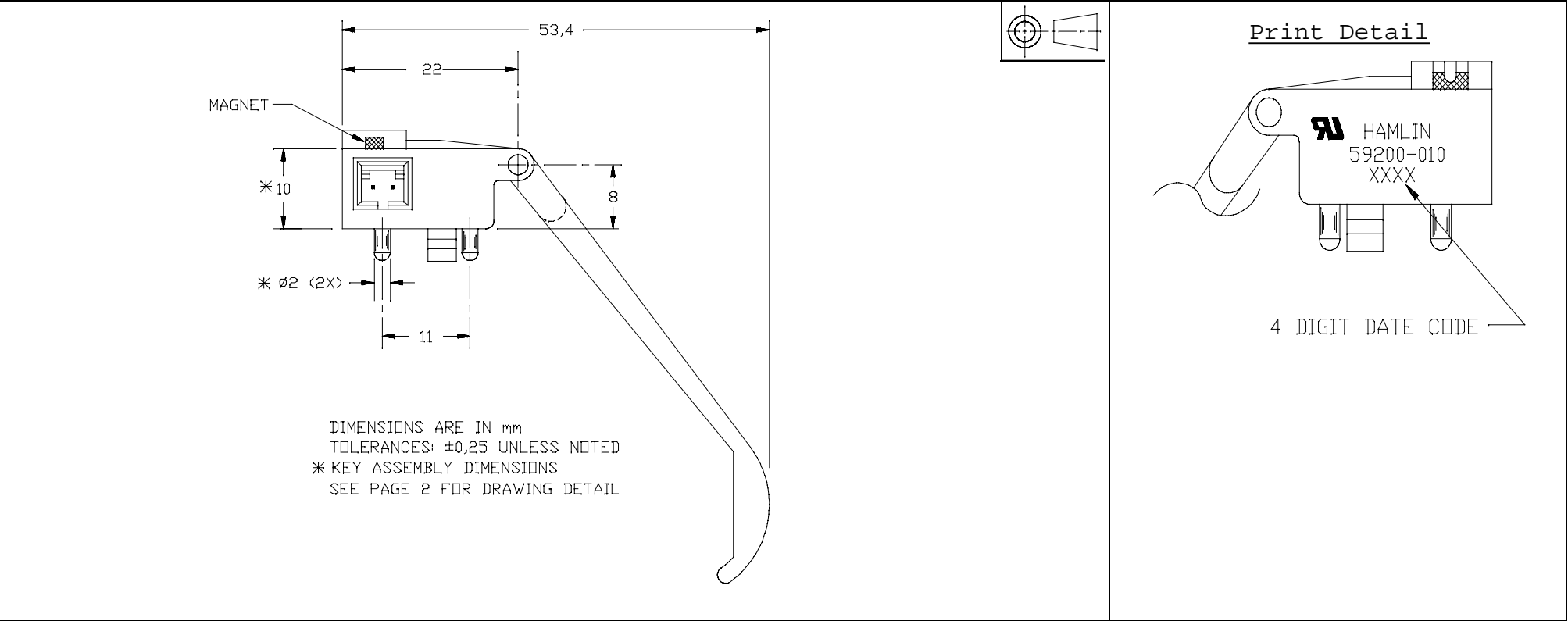
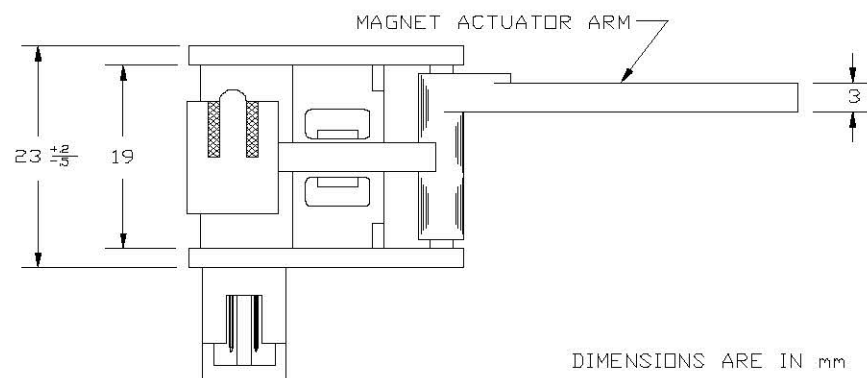


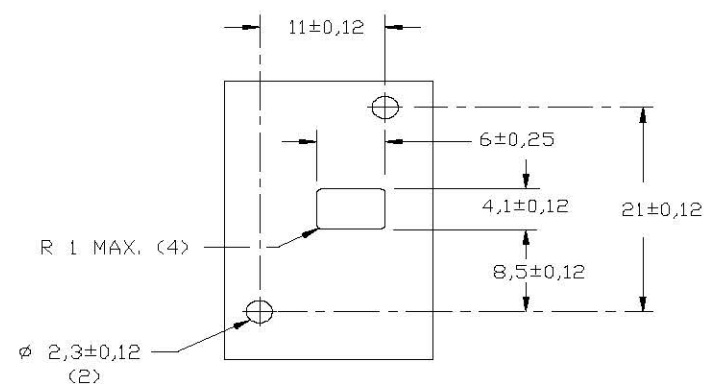
Electrical				Physical			
CONTACT TYPE		FORM A		BASE:		BLACK 15% G.F. NYLON 6/6	
CONTACT RATING, MAX.		10 WATTS		POTTING:		BLACK EPOXY	
SWITCHING VOLTAGE, MAX.		200 VDC		ARM:		BLACK UL94V-O 30% G.F. PBT	
SWITCHING CURRENT, MAX.		0.5 AMPS		CONNECTOR:		MOLEX SL EQUIV. (BLACK UL94V-O 30% G.F. PBT)	
CARRY CURRENT, MAX.		0.8 AMPS		PINS:		PHOSPHOR BRONZE .025 IN <sup>2</sup> GOLD PLATED	
CONTACT RESISTANCE INCLUDING LEADS, MAX.		200 mΩ		MAGNET:		CERAMIC 1	
BREAKDOWN VOLTAGE, MIN.		250 VDC		ACTUATE DISTANCE:		2° MIN. FROM REST	
				DEACTUATE DISTANCE:		15° MAX. FROM REST	



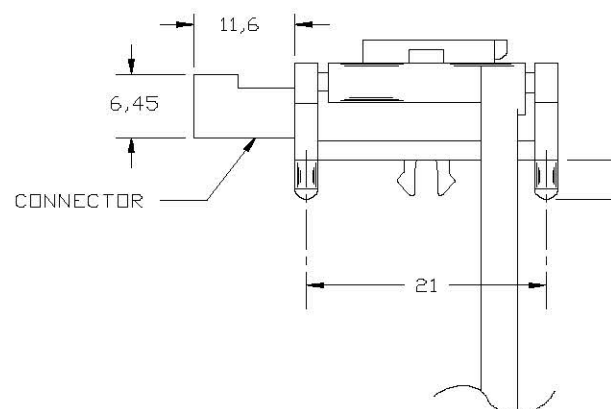
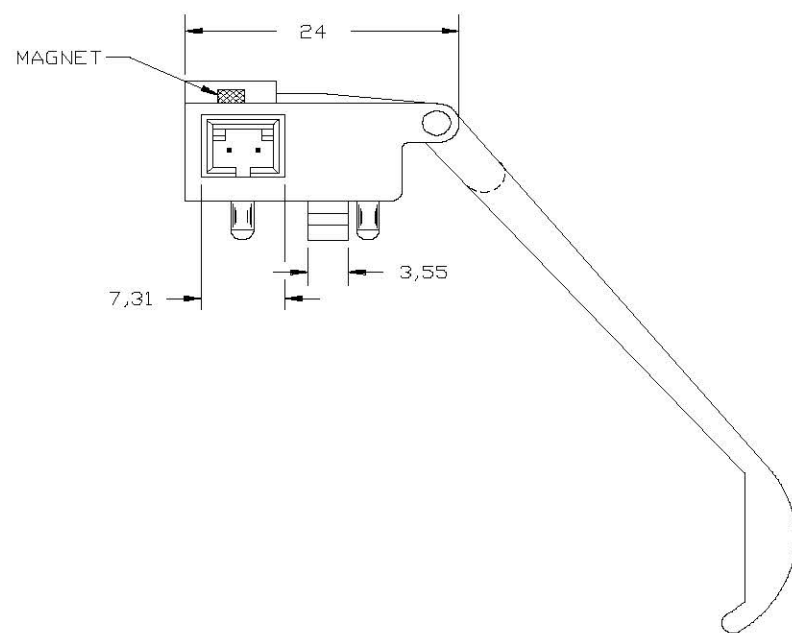
59200-010 SENSOR							Hamlin Breed Electronics Limited Partnership		DCR No. 1489
AC	PKG./FORMAT	A9317	BJW	10/26/01	BJW	10/026/0	Dwn. RLB	DATE 12/19/88	D10-59200-010
REV.	DESCRIPTION OF REVISION	DCR No.	BY	DATE	APP.	DATE	App'd BB	DATE 12/22/88	Page 1 of 2



DIMENSIONS ARE IN mm  
TOLERANCES: ±0,25 UNLESS NOTED



MATERIAL TO BE 1,6 ± 0,21 THICK  
SWITCH MOUNTING HOLE PATTERN



## 59200-010 SENSOR

Hamlin

Breed Electronics Limited Partnership

DCR No. 1489

AC      PKG./FORMAT      A9317      BJW      10/26/01      BJW      10/026/0

Dwn.      RLb      DATE      12/19/88

D10-59200-010

REV.      DESCRIPTION OF REVISION      DCR No.      BY      DATE      APP.      DATE

App'd      BB      DATE      12/22/88

Page 2 of 2