

FEATURES

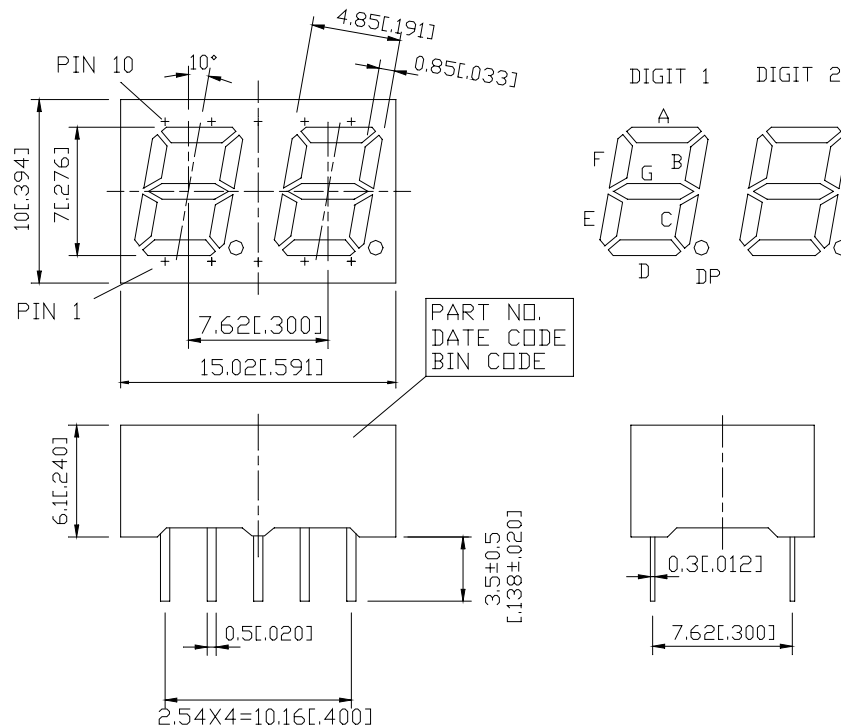
- ☐ 0.28-inch (7.0-mm) DIGIT HEIGHT.
- ☐ CONTINUOUS UNIFORM SEGMENTS.
- ☐ LOW POWER REQUIREMENT.
- ☐ EXCELLENT CHARACTERS APPEARANCE.
- ☐ HIGH BRIGHTNESS & HIGH CONTRAST.
- ☐ WIDE VIEWING ANGLE.
- ☐ SOLID STATE RELIABILITY.
- ☐ CATEGORIZED FOR LUMINOUS INTENSITY.

DESCRIPTION

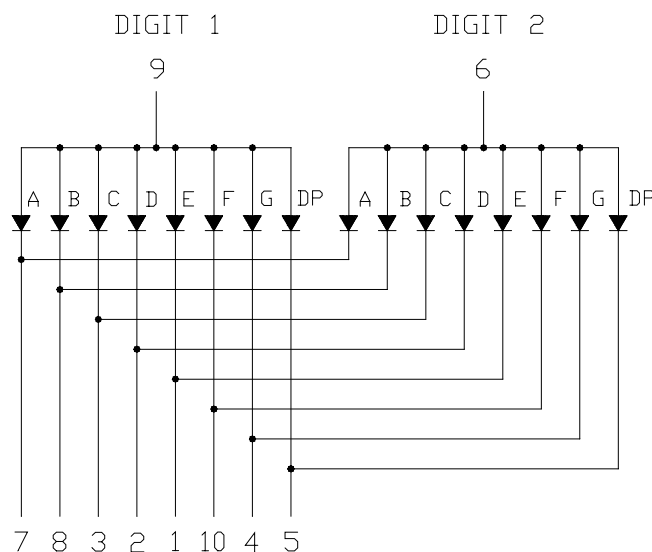
The LTD-2601B is a 0.28-inch (7.0-mm) digit height dual digit seven-segment display. This device utilizes blue LED chips, which are made from GaN on a SiC substrate, and has a gray face and white segments.

DEVICE

PART NO.	DESCRIPTION
BLUE	Duplex Common Anode Rt. Hand Decimal
LTD-2601B	

PACKAGE DIMENSIONS


NOTES: All dimensions are in millimeters. Tolerances are ± 0.25 mm (0.01") unless otherwise noted.

INTERNAL CIRCUIT DIAGRAM


PIN CONNECTION

No.	CONNECTION
1	CATHODE E
2	CATHODE D
3	CATHODE C
4	CATHODE G
5	CATHODE DP
6	COMMON ANODE (DIGIT 2)
7	CATHODE A
8	CATHODE B
9	COMMON ANODE (DIGIT 1)
10	CATHODE F

ABSOLUTE MAXIMUM RATING AT Ta=25°C

PARAMETER	MAXIMUM RATING	UNIT
Power Dissipation Per Segment	115	mW
Peak Forward Current Per Segment (1/10 Duty Cycle, 0.1ms Pulse Width)	60	mA
Continuous Forward Current Per Segment	25	mA
Derating Linear From 25℃ Per Segment	0.33	mA/℃
Reverse Voltage Per Segment	5	V
Operating Temperature Range	-35℃ to +85℃	
Storage Temperature Range	-35℃ to +85℃	
Solder Temperature: max 260℃ for max 3sec at 1.6mm below seating plane.		

ELECTRICAL / OPTICAL CHARACTERISTICS AT Ta=25°C

PARAMETER	SYMBOL	MIN.	TYP.	MAX.	UNIT	TEST CONDITION
Average Luminous Intensity	I _v	1000	3000		μcd	I _F =10mA
Peak Emission Wavelength	λ _p		428		nm	I _F =20mA
Spectral Line Half-Width	Δλ		65		nm	I _F =20mA
Dominant Wavelength	λ _d		466		nm	I _F =20mA
Forward Voltage Per Segment	V _F		3.8	4.5	V	I _F =20mA
Reverse Current Per Segment	I _R			100	μA	V _R =5V
Luminous Intensity Matching Ratio	I _v -m			2:1		I _F =10mA

Note: Luminous intensity is measured with a light sensor and filter combination that approximates the CIE (Commission Internationale De L'Eclairage) eye-response curve.

TYPICAL ELECTRICAL / OPTICAL CHARACTERISTIC CURVES

(25°C Ambient Temperature Unless Otherwise Noted)

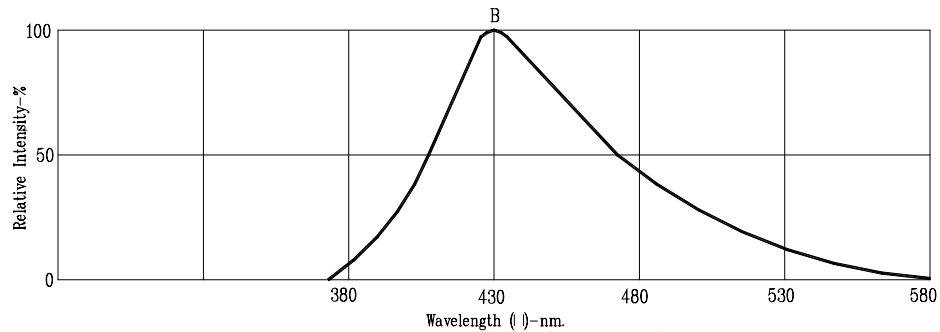


Fig1. RELATIVE INTENSITY VS. WAVELENGTH

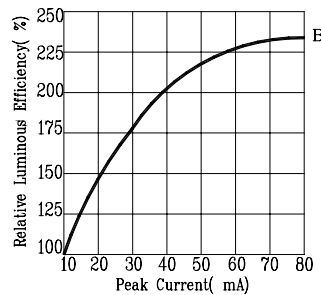


Fig2. RELATIVE LUMINOUS EFFICIENCY
VS. PEAK FORWARD CURRENT
(250us pulse width; 2ms period)

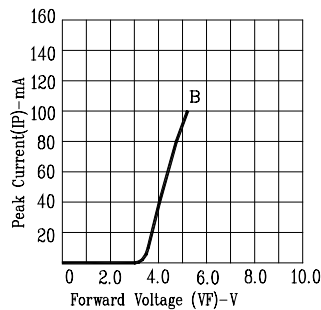


Fig3. FORWARD CURRENT VS.
FORWARD VOLTAGE

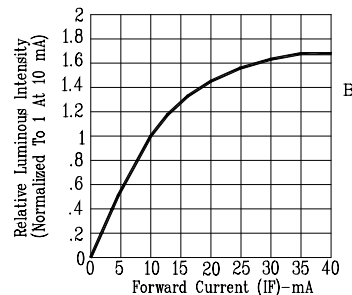


Fig4. RELATIVE LUMINOUS INTENSITY
VS. FORWARD CURRENT

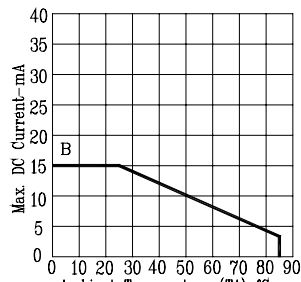


Fig5. MAX. ALLOWABLE DC CURRENT
VS. AMBIENT TEMPERATURE.

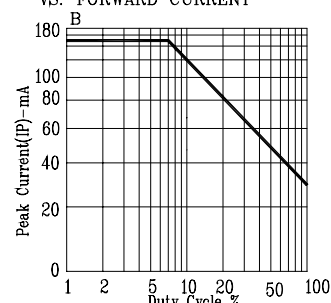


Fig6. MAX. PEAK CURRENT VS.
DUTY CYCLE %
(REFRESH RATE 1KHz)