

HONEYWELL  
PART NUMBER  
4

REV	DOCUMENT	CHANGED BY	CHECK
B	0062802	VKR 24MAR10	CMH

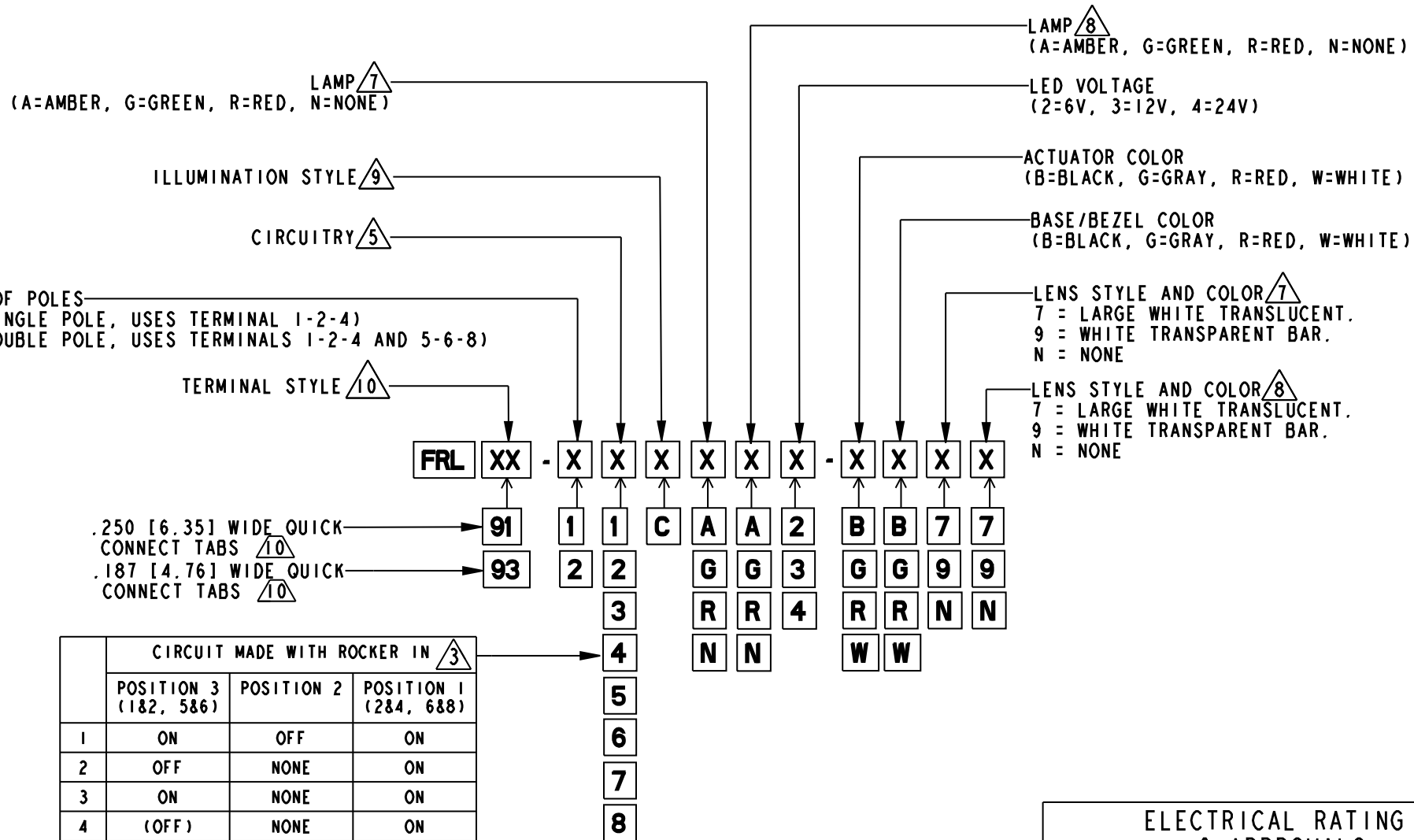
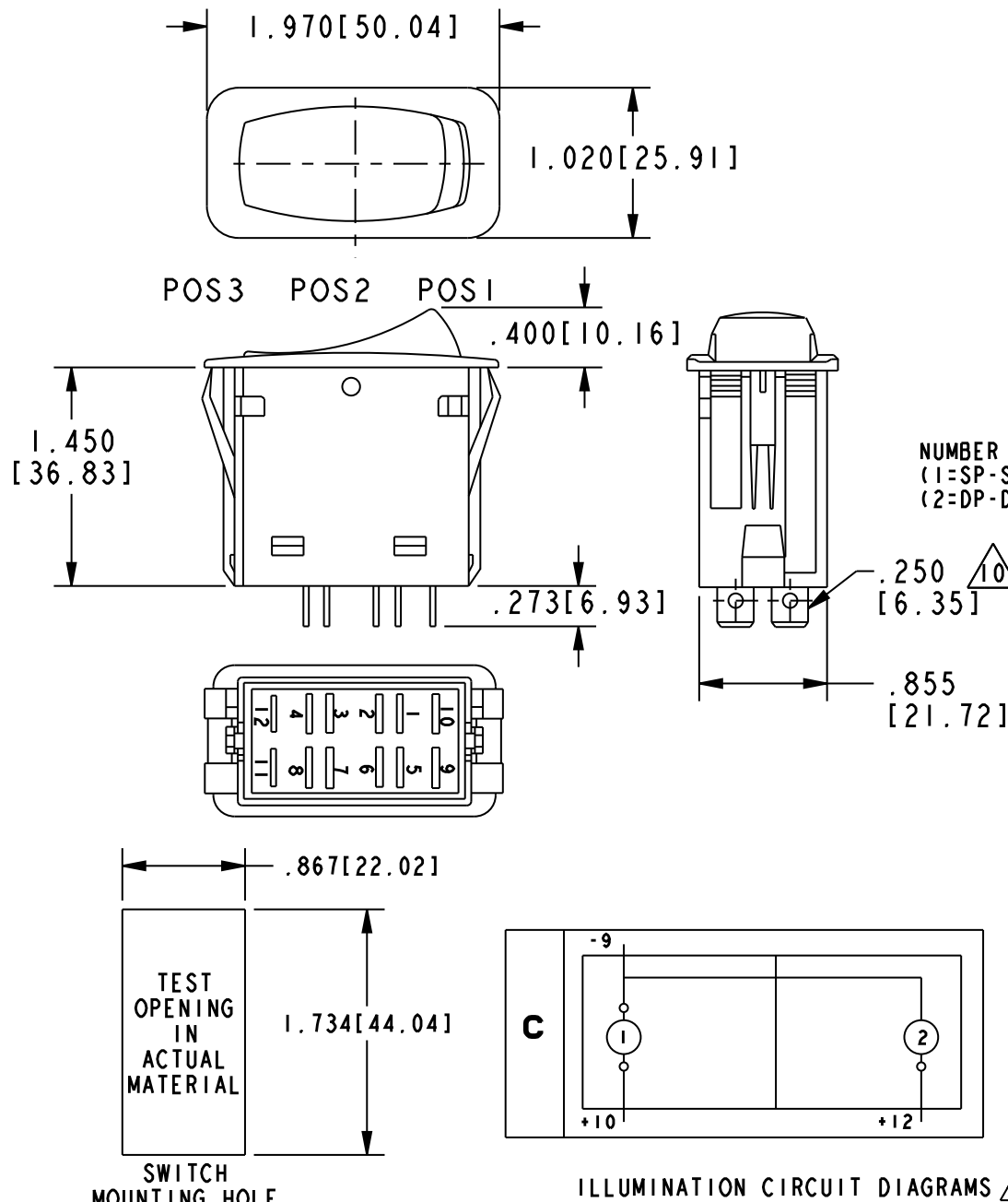
B

A

A


B

A



NOTES  
1 - OPERATING TEMPERATURE RANGE: -40°F TO +185°F (-40°C TO +85°C)  
2 - ELECTRICAL LIFE: 50,000 CYCLES MOMENTARY, 100,000 CYCLES MAINTAINED.  
3 - MECHANICAL LIFE: 250,000 CYCLES MIN  
4 - SEE DIAGRAM FOR CATALOGING SCHEME  
5 - PARENTHESIS DENOTE MOMENTARY ACTION  
6 - SEALED TO IP67  
7 - ABOVE TERMINALS 9 AND 10  
8 - ABOVE TERMINALS 11 AND 12  
9 - REFER TO CIRCUIT DIAGRAMS  
10 - TERMINAL WIDTH AND ELECTRICAL RATING DEPENDENT ON STYLE SELECTED

ELECTRICAL RATING & APPROVALS	
FOR .250 WIDE TABS: 20A, 12V FOR .187 WIDE TABS: 15A, 12V	

DESIGN UNITS: INCH TOLERANCES UNLESS NOTED:  NO PLACES X ± .040 ONE PLACE .X ± .030 TWO PLACE .XX ± .015 THREE PLACE .XXX ± .015 FOUR PLACE .XXXX ± .0005 ANGLES X ± 2°	DRAWN	CR	13 JUN 05	<div>Honeywell</div>					
	CHECK	RJ	13 JUN 05						
	THIS DRAWING COVERS A PROPRIETARY ITEM AND IS THE PROPERTY OF HONEYWELL. THIS DRAWING IS NOT TO BE COPIED OR USED WITHOUT THE PERMISSION OF HONEYWELL.			TITLE					
	INTERPRET PER ASME Y14.5M-1994 OTHER HONEYWELL ENGINEERING STANDARDS MAY APPLY			SIZE	TYPE	DRAWING NAME			REV
	Pro/ENGINEER 2D			B	I	FRL SERIES CHART 1			B
THIRD ANGLE PROJECTION 				SCALE	NTS			SHEET	1 OF 1