

HRS

HIF2B SERIES DIP PLUG

Description

This series is concerned with a connector used for direct connection with PC board.

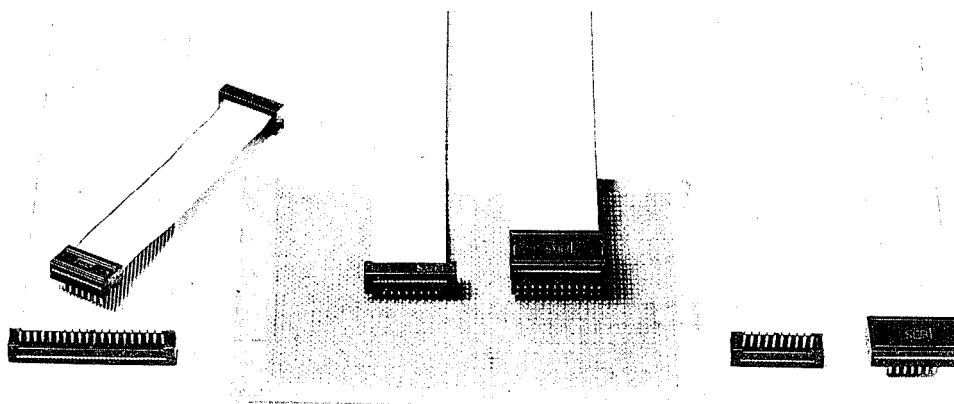
HIF2B series is a simplified product for firm connection between ribbon cable and PC board without the function of connecting and detaching.

There are multi-purpose (versatile) uses in combination with HIF1 or HIF3 series (connector) or in a single use,

thus it is contributing highly to the simplification and economization of internal wiring and wire-connection.

Two types each of HIF2B series are available.

One is IC type, which can be engaged with IC socket, whose No. of contacts are 14, 16, 24, and 40. The other is Dip type, which has 2.54 x 2.54 mm (.100" x .100") grid pattern, whose number of contacts are 10, 20, 26, 30, 34, 40, 50, and 60.



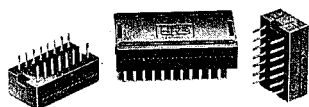
Features

1. IC type HIF2B series can be engaged with DL2 series low profile IC socket, which has been well reputed. the connecting method can be easily changed, and free designs can be greatly enhanced. Also, it is possible to attach directly to the PCB.
2. Simply designed DL2-lock A for 14 and 16, and DL2-lock 24 for 24 pin, provides for reliable coupling to HIF2 series IC type in combination with DL2 series IC socket.
3. Without using other connector, a cable end with HIF2B series can be directly, simply and surely connected to

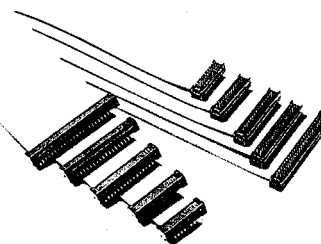
PCB, thus the use of HIF2B series in combination with HIF1 or HIF3 series can contribute to cost down by decreasing the number of parts.

4. Applicable cable: 1.27 mm (.0500") spacing AWG28 stranded ribbon cable.
5. Pin configuration

Two types are available. One is alternately opposite to HIF3A series and exactly same as conventional HIF2 series, and the other is same as HIF3A series.



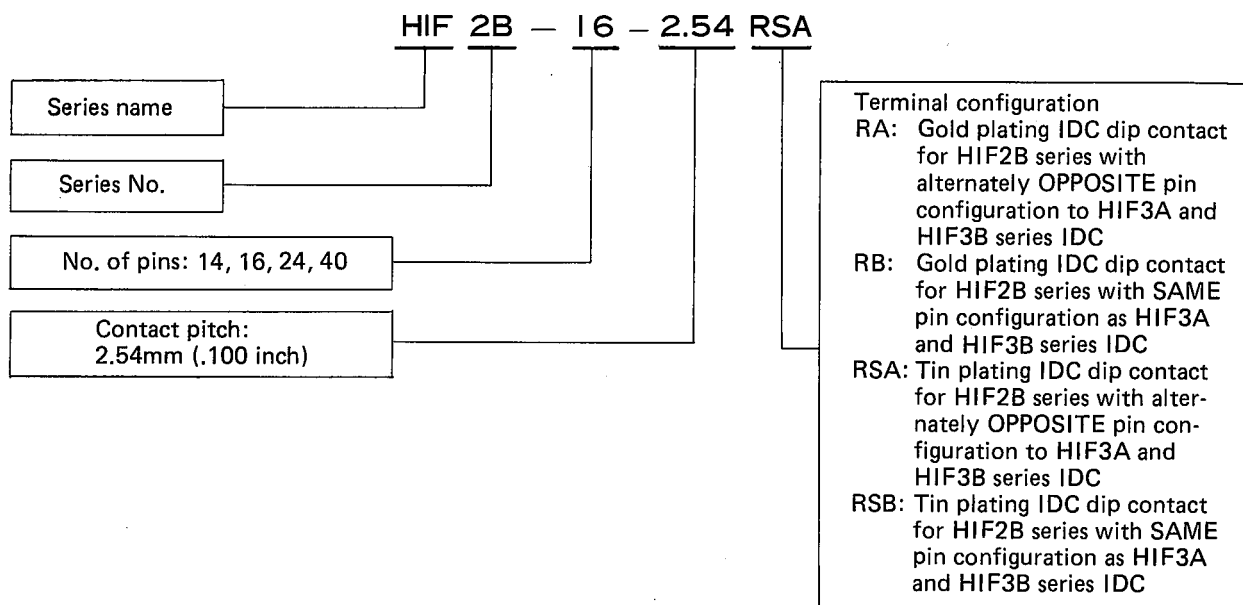
IC Type



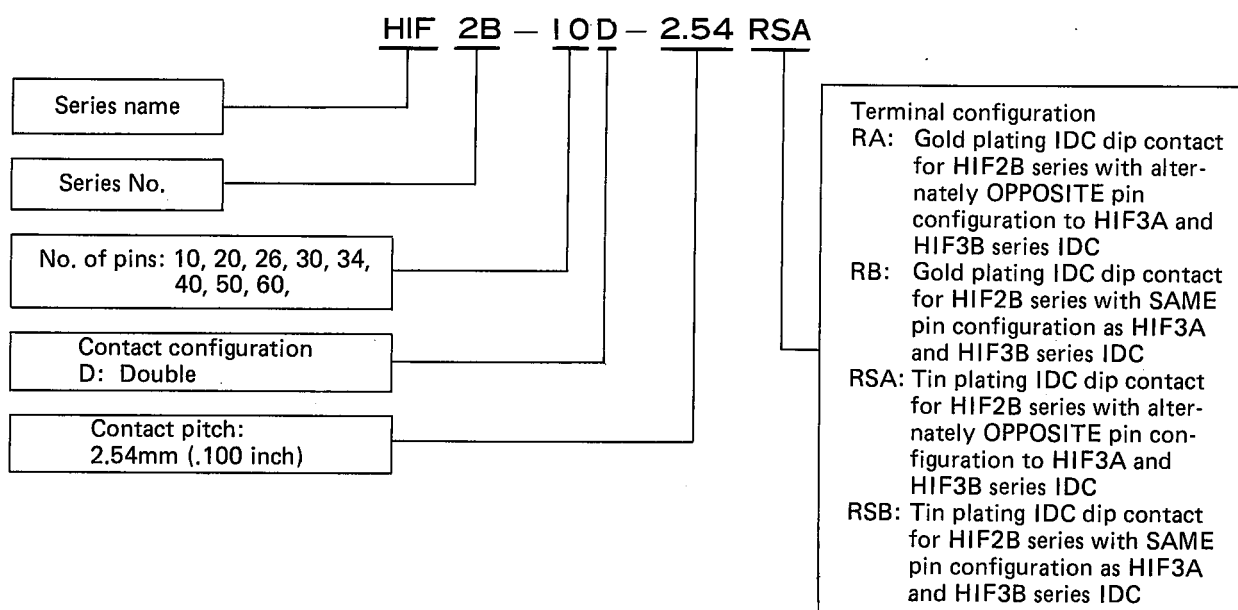
Dip Type

Ordering Information

• IC Type

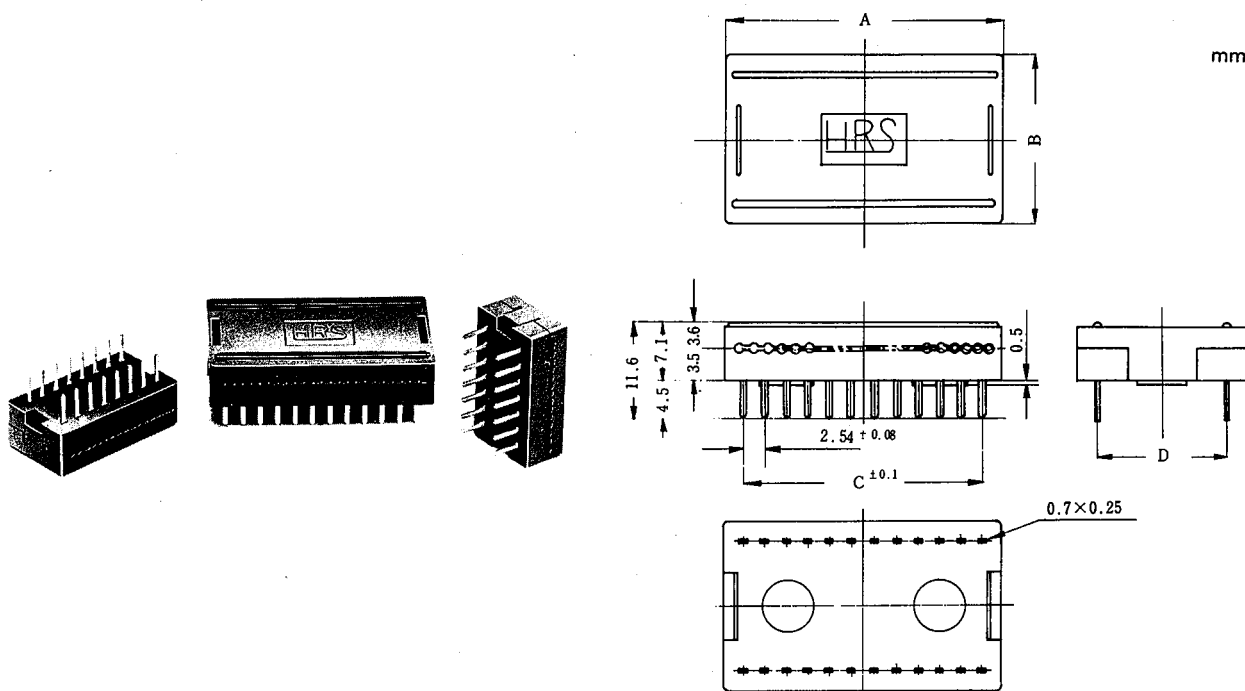


• Dip Type



HIF2B Series with Opposite Pin Configuration to HIF3A Series

1. IC Type



Unit:mm

| Part No. | No. of Pin | A | B | C | D |
|------------------|------------|------|------|-------|-------|
| HIF2B-14-2.54RA | 14 | 20.7 | 12.5 | 15.24 | 7.62 |
| HIF2B-14-2.54RSA | | | | | |
| HIF2B-16-2.54RA | 16 | 22.4 | 12.5 | 17.78 | 7.62 |
| HIF2B-16-2.54RSA | | | | | |
| HIF2B-24-2.54RA | 24 | 32.5 | 20.0 | 27.94 | 15.24 |
| HIF2B-24-2.54RSA | | | | | |
| HIF2B-40-2.54RA | 40 | 52.9 | 20.0 | 48.26 | 15.24 |
| HIF2B-40-2.54RSA | | | | | |

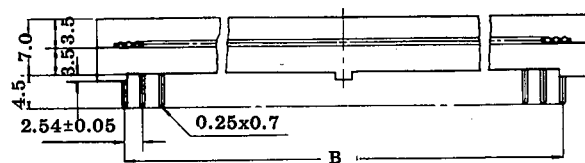
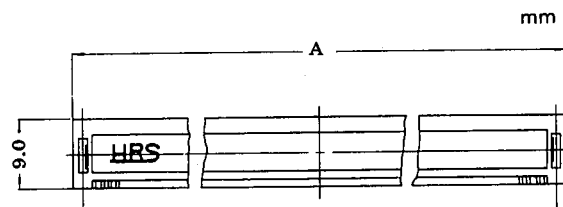
Unit:mm

| Part No. | No. of Pin | A | B | C | D |
|------------------|------------|------|------|-------|-------|
| HIF2B-14-2.54RB | 14 | 20.7 | 12.5 | 15.24 | 7.62 |
| HIF2B-14-2.54RSB | | | | | |
| HIF2B-16-2.54RB | 16 | 22.4 | 12.5 | 17.78 | 7.62 |
| HIF2B-16-2.54RSB | | | | | |
| HIF2B-24-2.54RB | 24 | 32.5 | 20.0 | 27.94 | 15.24 |
| HIF2B-24-2.54RSB | | | | | |
| HIF2B-40-2.54RSB | 40 | 52.9 | 20.0 | 48.26 | 15.24 |
| HIF2B-40-2.54RSB | | | | | |

2. Dip Type

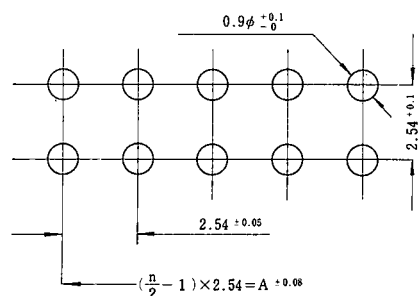
| Part No. | No. of Pin | A | B |
|-------------------|------------|-------|-------|
| HIF2B-10D-2.54RA | 10 | 19.50 | 10.16 |
| HIF2B-10D-2.54RSA | | | |
| HIF2B-14D-2.54RA | 14 | 24.26 | 15.24 |
| HIF2B-14D-2.54RSA | | | |
| HIF2B-16D-2.54RA | 16 | 26.8 | 17.78 |
| HIF2B-16D-2.54RSA | | | |
| HIF2B-20D-2.54RA | 20 | 31.88 | 22.86 |
| HIF2B-20D-2.54RSA | | | |
| HIF2B-26D-2.54RA | 26 | 39.50 | 30.48 |
| HIF2B-26D-2.54RSA | | | |
| HIF2B-30D-2.54RA | 30 | 44.55 | 35.56 |
| HIF2B-30D-2.54RSA | | | |
| HIF2B-34D-2.54RA | 34 | 49.66 | 40.64 |
| HIF2B-34D-2.54RSA | | | |
| HIF2B-40D-2.54RA | 40 | 57.28 | 48.26 |
| HIF2B-40D-2.54RSA | | | |
| HIF2B-50D-2.54RA | 50 | 69.98 | 60.96 |
| HIF2B-50D-2.54RSA | | | |
| HIF2B-60D-2.54RA | 60 | 82.65 | 73.66 |
| HIF2B-60D-2.54RSA | | | |

| Part No. | No. of Pin | A | B |
|-------------------|------------|-------|-------|
| HIF2B-10D-2.54RB | 10 | 19.50 | 10.16 |
| HIF2B-10D-2.54RSB | | | |
| HIF2B-14D-2.54RB | 14 | 24.26 | 15.24 |
| HIF2B-14D-2.54RSB | | | |
| HIF2B-16D-2.54RB | 16 | 26.8 | 17.78 |
| HIF2B-16D-2.54RSB | | | |
| HIF2B-20D-2.54RB | 20 | 31.88 | 22.86 |
| HIF2B-20D-2.54RSB | | | |
| HIF2B-26D-2.54RB | 26 | 39.50 | 30.48 |
| HIF2B-26D-2.54RSB | | | |
| HIF2B-30D-2.54RB | 30 | 44.55 | 35.56 |
| HIF2B-30D-2.54RSB | | | |
| HIF2B-34D-2.54RB | 34 | 49.66 | 40.64 |
| HIF2B-34D-2.54RSB | | | |
| HIF2B-40D-2.54RB | 40 | 57.28 | 48.26 |
| HIF2B-40D-2.54RSB | | | |
| HIF2B-50D-2.54RB | 50 | 69.98 | 60.96 |
| HIF2B-50D-2.54RSB | | | |
| HIF2B-60D-2.54RB | 60 | 82.65 | 73.66 |
| HIF2B-60D-2.54RSB | | | |



HIF2B

Recommended Mounting Hole Pattern



Note: On IC-type, note that the dimension of 2.54 ± 0.1 becomes 7.62 ± 0.1 or 15.24 ± 0.1 .

A: Total pitch (spacing) of connector

n: Number of poles of connector

Finished through hole diameter of PC board: $0.9^{+0.1}_{-0}$

HIF2B Series with Same Pin Configuration as HIF3 Series

This series are completely same in electrical, mechanical and size as the other HIF2B series except pin configuration which provides for alternately opposite connecting circuit to the other HIF2B series and exactly same as HIF3 series.

1. IC Type

| Part No. | No. of pin |
|------------------|------------|
| HIF2B-14-2.54RB | 14 |
| HIF2B-14-2.54RSB | |
| HIF2B-16-2.54RB | 16 |
| HIF2B-16-2.54RSB | |
| HIF2B-24-2.54RB | 24 |
| HIF2B-24-2.54RSB | |
| HIF2B-40-2.54RB | 40 |
| HIF2B-40-2.54RSB | |

2. Dip Type

| Part No. | No. of pin |
|-------------------|------------|
| HIF2B-10D-2.54RB | 10 |
| HIF2B-10D-2.54RSB | |
| HIF2B-20D-2.54RB | 20 |
| HIF2B-20D-2.54RSB | |
| HIF2B-26D-2.54RB | 26 |
| HIF2B-26D-2.54RSB | |
| HIF2B-30D-2.54RB | 30 |
| HIF2B-30D-2.54RSB | |
| HIF2B-34D-2.54RB | 34 |
| HIF2B-34D-2.54RSB | |
| HIF2B-40D-2.54RB | 40 |
| HIF2B-40D-2.54RSB | |
| HIF2B-50D-2.54RB | 50 |
| HIF2B-50D-2.54RSB | |
| HIF2B-60D-2.54RB | 60 |
| HIF2B-60D-2.54RSB | |

Material and Finish

| Item | Material | Finish | Remarks |
|---------|----------------------------|---|---------|
| Molding | Glass-reinforced Polyester | Black | UL94-0 |
| Contact | Beryllium copper | Nickel plating (tinning) + gold plating | |

Electrical Performance

| Item | Condition | Standard |
|-----------------------|-----------------------------|------------------|
| Current capacity | | 1A |
| Rated voltage | | AC 200V |
| Insulation resistance | At DC 500V | 1000MΩ or higher |
| Withstand voltage | 1 minute at specified value | AC 650Vrms |
| Contact resistance | Measured at DC 100mA | *15mΩ or less |

* Including conductor resistance