

Single Site Programmer Quick Start Guide

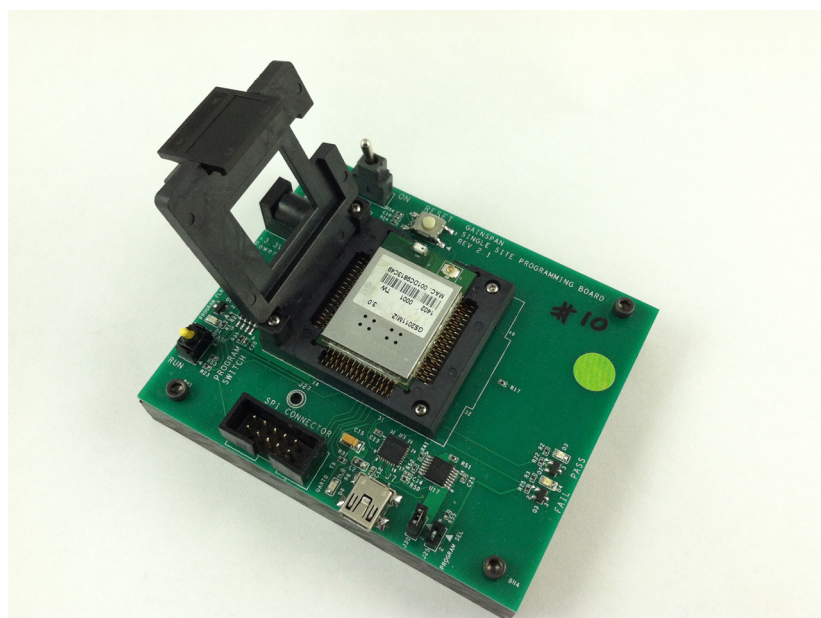
**Supports GS2011Mxx, GS2011MxxS,
GS2100Mxx, and GS2200Mxx Modules**

This Quick Start Guide will walk you through the easy steps to setup the GS2xxxM Single Site Programmer.

Your kit contains the following:

- Quick Start Guide (this document)
- GS2011M, GS2011MxxS, GS2100M, or a GS2200Mxx
- Single Site Programmer
- Serial Cable (USB to Mini-USB)
- 3.3V DC Power Supply (Not applicable for GS2200Mxx)

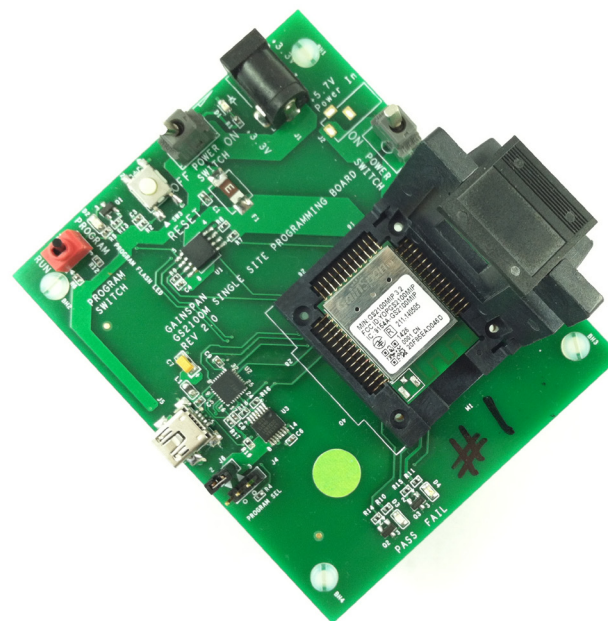
GS2011M Single Site Programmer



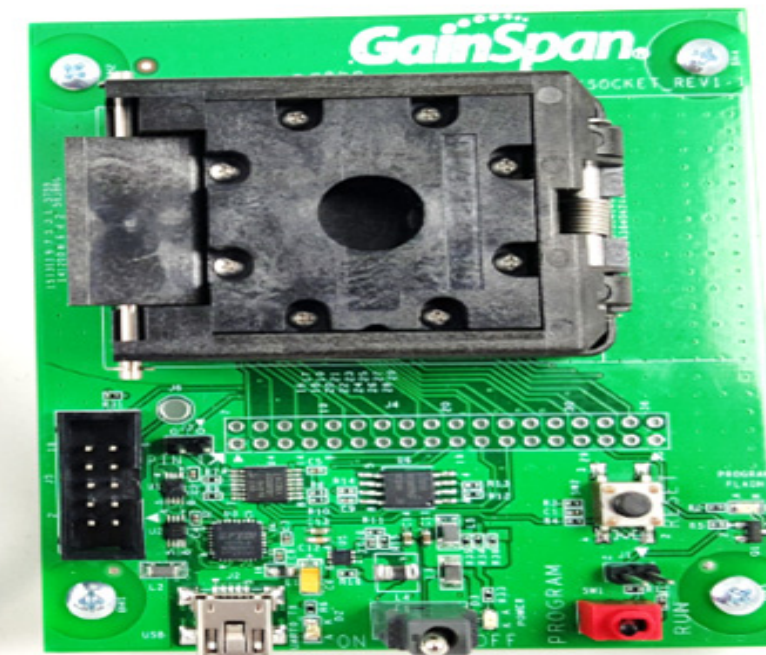
GS2011MxxS Single Site Programmer



GS2100M Single Site Programmer



GS2200Mxx Single Site Programmer



ESD Alert! Charged devices and circuit boards can discharge without detection. Although this product features patented or proprietary protection circuitry, damage may occur on devices subjected to high energy ESD. Therefore, proper ESD precautions should be taken to avoid performance degradation or loss of functionality.

Connect



Alert! Make sure you unplug/plug the mini-USB cable with the ON/OFF switch in the OFF position.

Remove the contents of your Single Site Programmer Kit.

Plug the mini-USB cable into the USB port on the Single Site board. Plug the other end of the USB cable into a USB port on your computer or laptop.

Plug the 3.3V DC power cable into the 3.3V DC power connector on the Single Site Programmer and plug the other end into a power outlet.



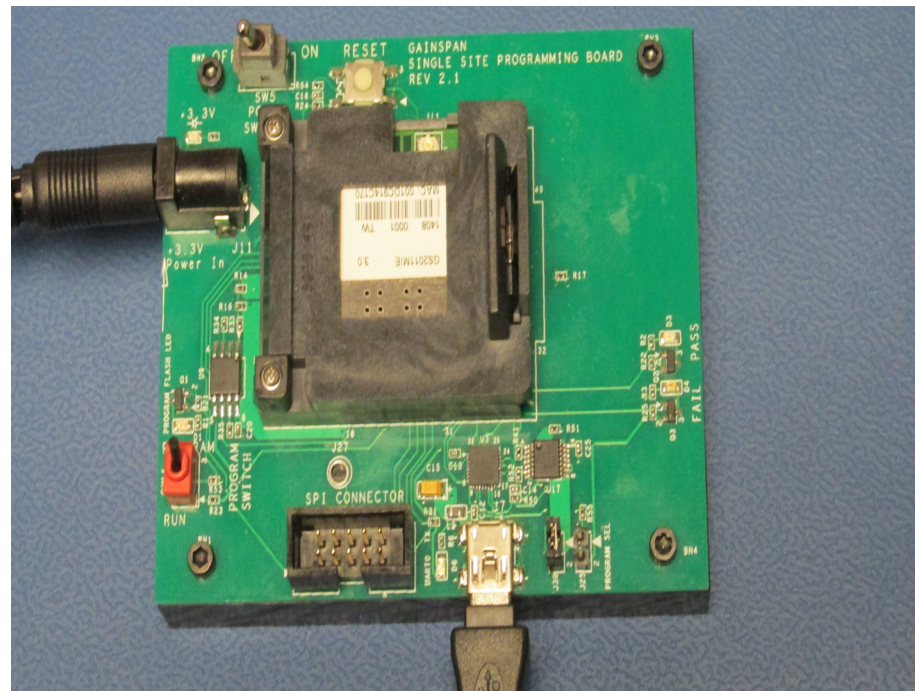
Alert! DO NOT turn on the Single Site Programmer until the module is installed into the socket site.



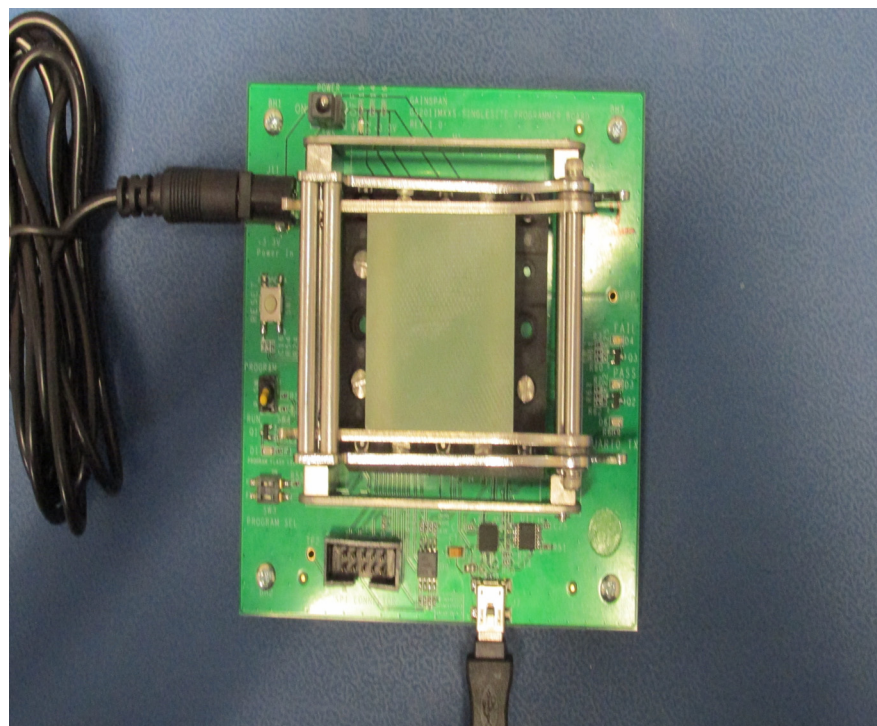
Note: The boards GS2011M, GS2011MxxS, GS2100M require a 3.3V DC power supply to power the site except GS2200Mxx board.

The RUN/PROGRAM switch should be set to PROGRAM mode at all times.

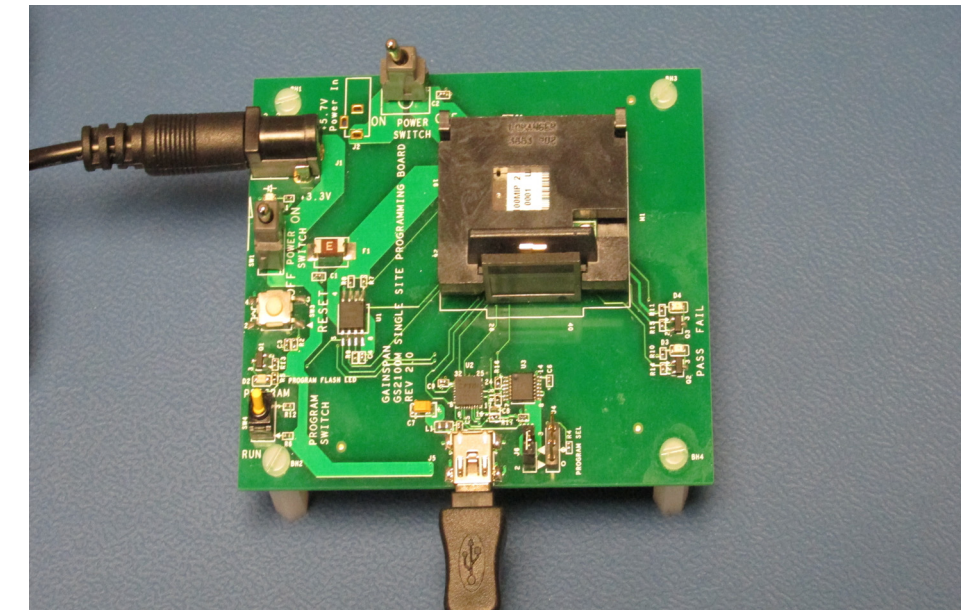
GS2011M



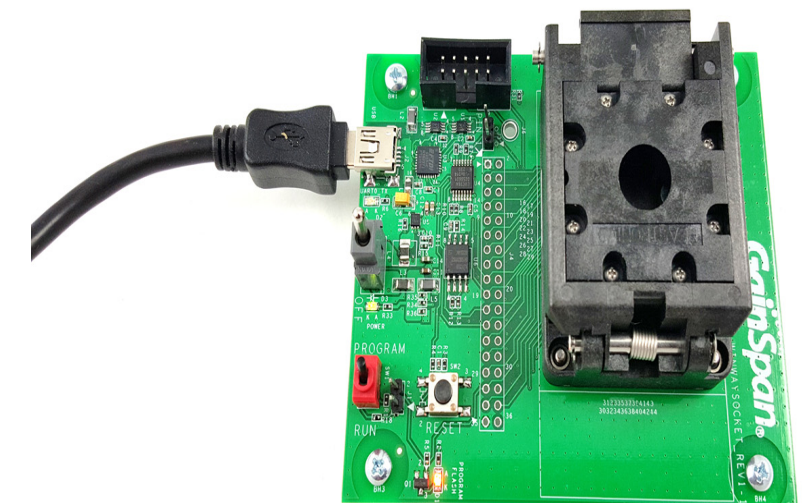
GS2011MxxS



GS2100M



GS2200M

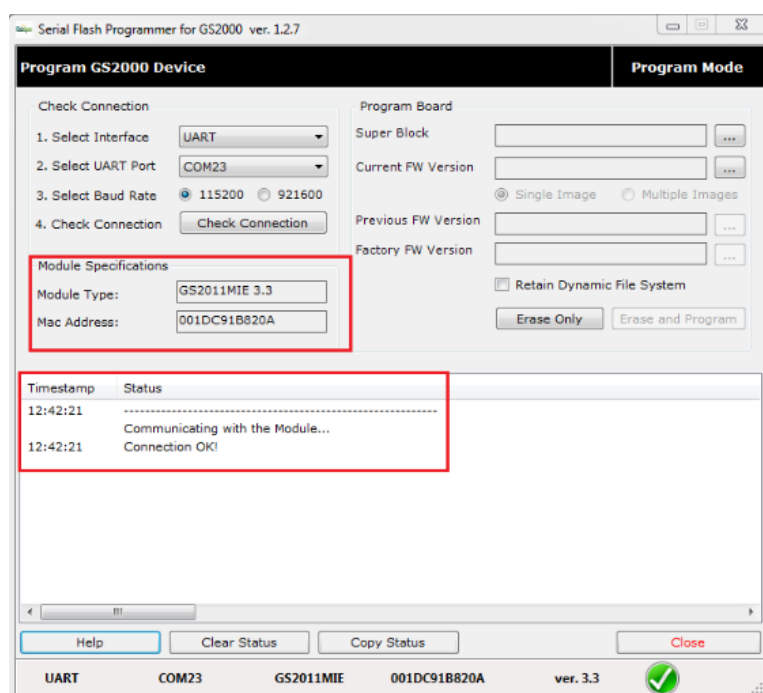


Program

Before proceeding to program the modules using the GUI application, you first have to download the latest module firmware binaries. Refer to the *GainSpan GS2000 Based Module Software Developer Kit (SDK) Builder User Guide* for further instructions on how to check for the latest firmware binaries and how to build custom firmware and binaries to be used to program the modules.

Open the location where your SDK package resides on your C:\drive.

Open the **GS_programming_tool** folder, select **gui_version**, and launch the **gs2K_flashprogram** utility.



Select the Interface, UART port, Baud Rate, Module, GEPS version, and Check Connection. A Green check at the bottom of the GUI utility screen will display.

Select and program the binaries. For instructions on how to program the binaries, refer to the *GainSpan GS2000 Based Module Single Site Programmings User Guide*.

Information

For additional information, refer to the following documents for:

- Programming the modules using the Single Site Programmer:
 - *GS2000 Based Module Single Site Programmer User Guide*
GS2K-SNG-SITE-PRG-UG-001234
- Configuring, building, and generating custom firmware binary images:
 - *Software Developer Kit (SDK) Builder User Guide*
GS2K-SDK-BLDR-UG-001223

For general questions, visit:

<http://www.gainspan.com/contactform>

For sales, visit:

http://www.gainspan.com/contact/sales_distributors

For technical and product support, visit:

<https://www.gainspan.com/secure/question>