



Pressure sensors

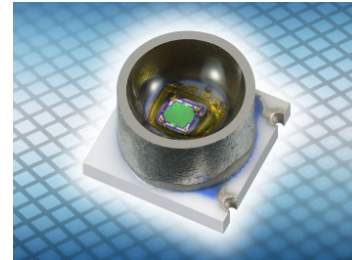
Barometric pressure transmitters for SMT

Series/Type: ASB series
Ordering code:
Date: 2011-11-10
Version: 2.4

Preliminary data

Description

- Pressure sensor transmitters based on piezoresistive silicon pressure dies
- On board compensation circuit for non-linearity and temperature error
- Miniaturized SMD hybrid package (4.3mm x 4.3mm x 2.4mm)



Features

- Analog ratiometric or fixed voltage interface with adjustable output limits (clipping)
- Diagnosis functions like loss of V_{dd}/V_{ss}, bridge connections and short cuts
- High immunity against electromagnetic influences
- Plastic free surface mount technology for reflow soldering
- Conforming to RoHS Directive

Options

- Other output characteristics and / or rated pressure ranges upon request

Table of Contents

1. Technical Data	3
2. Analog Output (VR/V1)	4
3. Digital Output – I ² C (D5)	5
4. Total Error (Temperature Error Multiplier)	9
5. Board Layout (Recommendation)	9
6. Reliability Testing	10
7. Product Key	11
8. Ordering Codes	11
9. Packaging.....	12
10. Reflow Soldering	13
Symbols and terms.....	14
Cautions and warnings.....	15

Preliminary data
1. Technical Data
Absolute maximum ratings

Parameter	Symbol	Conditions	Min.	Max.	Unit
Temperature ranges					
Storage temperature range	T_{st}	¹⁾	-40	+125	°C
Operating temperature range	T_{op}	TN ²⁾	-40	+85	°C
		TE ²⁾	-40	+125	°C
Compensated temperature range	T_c	^{3),4)}	0	+70	°C
Soldering temperature	T_{solder}			+260	°C
Pressure ranges					
Rated pressure	p_r	absolute	0.2 (2.9)	1.2 (17.4)	bar (psi)
Overpressure	p_{ov}	^{4), 5)}	2		p_r
Burst pressure			3		p_r
Supply voltage /-current					
Supply voltage	V_{supply}	⁶⁾	2.7	5.5	V
Supply current	I_{supply}	$I_{out} = 0$		2.5	mA
Signal output current	I_{out}	⁷⁾		2	mA
Start up time	t_{STA}	⁸⁾		10	ms

Preliminary data

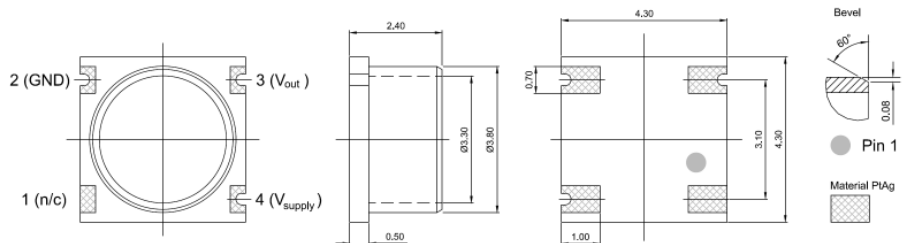
2. Analog Output (VR/V1)

Parameter	Symbol	Conditions	Min.	Typ.	Max.	Unit
Analog output signal (VR/V1) @ T_{op} = 25°C, V_{supply} = 5 V, I_{out} < 0.1 mA						
Offset (at p _{r,min})	V _{out,0}	VR: ratiometric ⁹⁾		10		%V _{CC}
		V1: 0 ... 1000 mV ⁹⁾	0	2.5		mV
Signal span (Full Scale)	V _{FS}	VR: ratiometric ¹⁰⁾		80		%V _{CC}
		V1: 0 ... 1000 mV ¹⁰⁾		1000		mV
Full scale output at p _{r,max}	V _{out,0} + V _{FS}	VR: ratiometric ^{9), 10)}		90		%V _{CC}
Diagnostic levels		enabled upon request	disabled			
Non-linearity	L	Simple output ^{10), 11)}		±0.1		% FS
Response time	t ₁₀₋₉₀	¹²⁾		2		ms
Resolution	r _{OUT}	¹³⁾		12		bit
Basic accuracy		T _{op} : 0 ... 70°C		± 2	± 3	% FS

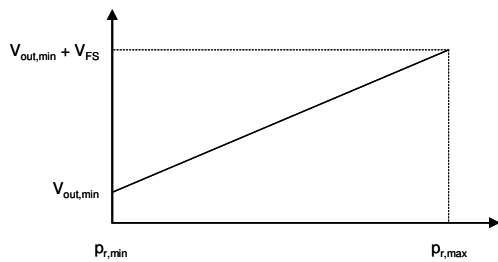
Terminal assignment

Pin	Symbol	Signal
1	-	not connected
2	GND	Ground
3	V _{out}	Output signal
4	V _{supply}	Supply voltage

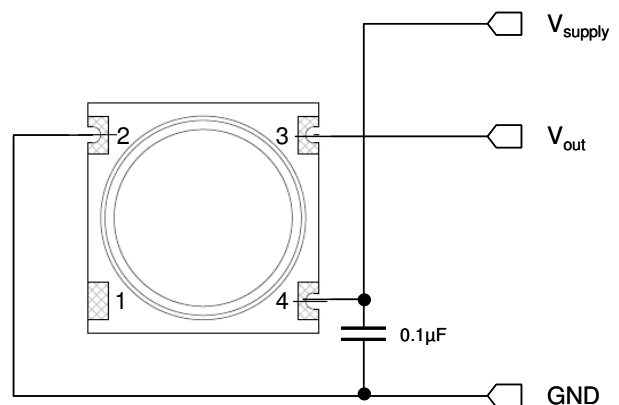
Dimensional drawings



Output Characteristics



Application Circuit



Conversion Formula

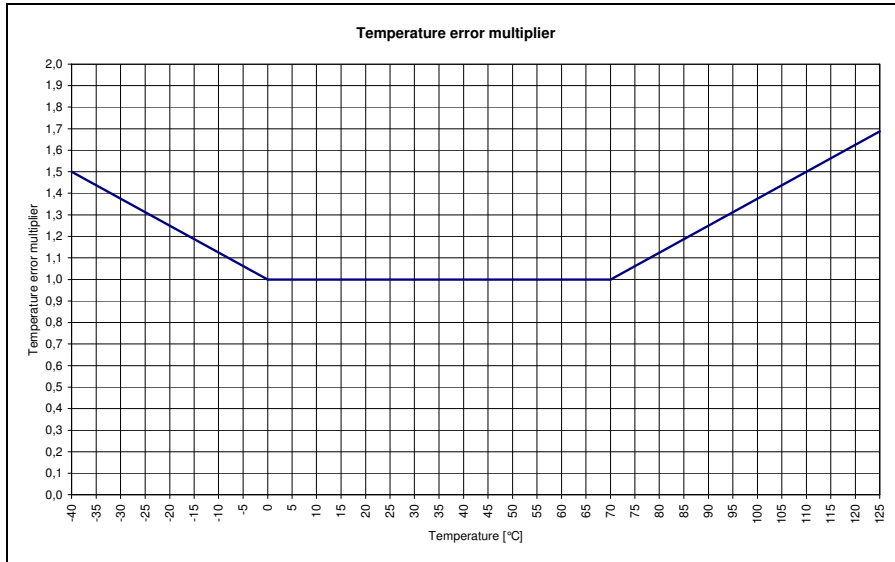
$$VR: p_{meas} = \frac{(p_{r,max} - p_{r,min})}{V_{FS}} \cdot \left(\frac{V_{meas} - V_{out,min}}{V_{Supply}} \right) + p_{r,min}$$

$$V1: p_{meas} = \frac{(p_{r,max} - p_{r,min})}{V_{FS}} \cdot (V_{meas} - V_{out,min}) + p_{r,min}$$

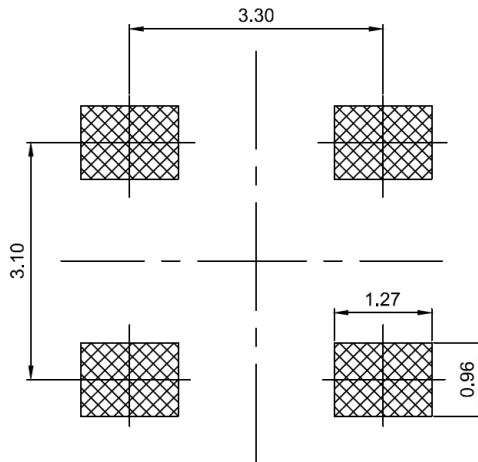
Preliminary data

3. Total Error (Temperature Error Multiplier)

The output accuracy over the whole temperature range can be calculated by multiplying the basic accuracy with a temperature dependant factor as shown in the following graph.



4. Board Layout (Recommendation)



Preliminary data
5. Reliability Testing
Test Criterion:

All sensors have to be within the specified tolerances (refer to chapters 1 – 4) before and after each test listed below.

Performed Tests:

Test	Standard	Test conditions
Early Life Failure Rate (ELFR)	following to AEC-Q100-008	- Storage for 24h at +105°C
Preconditioning (PC)	following to AEC-Q100, JEDEC J-STD-020 and JEDEC JESD22-A113	- Parts from ELFR test - 5 cycles shipping conditions (-40°C to +60°C) - Bake 24h at +125°C - Soak 192h at +30°C and 60% r.h. - Apply 3 reflow soldering cycles
High Temperature Storage Life (HTSL)	following to AEC-Q100 and JEDEC JESD22-A103	- Parts from PC test - Storage for 1000h at +125°C - Unpowered
High Temperature Operating Life (HTOL)	following to AEC-Q100 and JEDEC JESD22-A108	- Parts from ELFR test - Operating for 408h at +105°C - Powered with V_{supply} at +5VDC
Variable Frequency Vibration Test (VFV)	following to AEC-Q100 and JEDEC JESD22-B103	- Parts from ELFR test - Logarithmic sweep from 20Hz to 2KHz to 20Hz within 4min - Max. acceleration at 50g - 4 x 4min in each orientation (total 144min)
Mechanical Shock Test (MS)	following to AEC-Q100 and JEDEC JESD22-B104	- Parts from ELFR test - 5 pulses with 1,500g peak acceleration in positive vertical direction - Peak duration 0.5ms
Pressure Cycle Test	(Internal standard)	- Parts from ELFR test - 1,000,000 pressure cycles between minimum rated pressure ($p_{r,min}$) and overpressure (p_{ov}) - Test performed at room temperature

Pressure sensors

Barometric pressure transmitters for SMT

ASB series

Preliminary data

6. Product Key

ASB 1.200 VR TN H19 KXXXX

Customer Specific Index		Optional, reserved
Pressure Feed		Reserved
Operating Temperature Range	TN TE	Normal Temp. Range (-40°C ... +85°C) Extended Temp. Range (-40°C ... +125°C)* <small>*only available upon request</small>
Output signal	VR V1	0.1 ... 0.9 V/V (ratiometrical) 0 ... 1 V
Rated pressure range		1.200 bar (17.4 psi)
Measuring type	B	Barometric (Absolute)
Sensor type	AS	Advanced Surface Mount Technology

8. Ordering Codes

Rated Pressure p_r [bar] ([psi])	Normal Temperature Range		
	Ratiometric	0..1000 mV	
1.200 (17.4)	Samples available upon request		

Preliminary data

9. Packaging

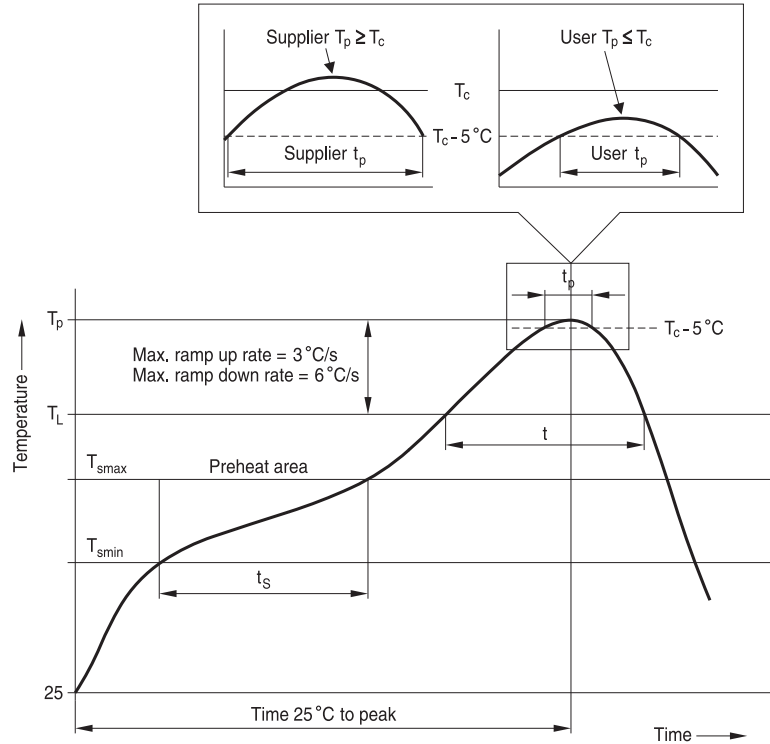
Packaging for samples is separated in ESD bags and ESD box.

(Tape and reel packaging acc. to IEC 60286-3 will be defined.)

Preliminary data

10. Reflow soldering

Recommended temperature characteristic for reflow soldering following JEDEC J-STD-020D



Profile feature		Sn-Pb eutectic assembly	Pb-free assembly
Preheat and soak			
- Temperature min	T_{smin}	100 °C	150 °C
- Temperature max	T_{smax}	150 °C	200 °C
- Time	t_{smin} to t_{smax}	60 ... 120 s	60 ... 180 s
Average ramp-up rate	T_{smax} to T_p	3 °C/s max.	3 °C/s max.
Liquidous temperature	T_L	183 °C	217 °C
Time at liquidous	t_L	60 ... 150 s	60 ... 150 s
Peak package body temperature	T_p ^{A)}	220 °C ... 235 °C ^{B)}	245 °C ... 260 °C ^{B)}
Time (t_p) ³⁾ within 5 °C of specified classification temperature (T_c)		20 s ^{C)}	30 s ^{C)}
Average ramp-down rate	T_p to T_{smax}	6 °C/s max.	6 °C/s max.
Time 25 °C to peak temperature		maximum 6 min	maximum 8 min

A) Tolerance for peak profile temperature (T_p) is defined as a supplier minimum and a user maximum.

B) Depending on package thickness. For details please refer to JEDEC J-STD-020D.

C) Tolerance for time at peak profile temperature (t_p) is defined as a supplier minimum and a user maximum.

Preliminary data
Symbols and terms

- 1) **Storage temperature range T_{st}**
A storage of the pressure sensor within the temperature range $T_{st,min}$ up to $T_{st,max}$ and without applied pressure and supply voltage will not affect the performance of the pressure sensor.
- 2) **Operating temperature range T_{op}**
An operation of the pressure sensor within the temperature range $T_{op,min}$ up to $T_{op,max}$ will not affect the performance of the pressure sensor.
- 3) **Compensated temperature range T_c**
While operating the pressure sensor within the temperature range $T_{c,min}$ up to $T_{c,max}$, the deviation of the output signal from the values at 25 °C will not exceed the temperature coefficients. Out of the compensated temperature range, the deviations may increase.
- 4) **Rated pressure p_r**
Within the rated pressure range 0 up to $p_{r,max}$ the signal output characteristic corresponds to this specification.
- 5) **Overpressure p_{ov}**
Pressure cycles within the pressure range 0 up to p_{ov} will not affect the performance of the pressure sensor.
- 6) **Supply voltage V_{supply}**
 $V_{supply,max}$ is the maximum permissible supply voltage, which can be applied without damages.
 $V_{supply,min}$ is the minimum required supply voltage, which has to be applied for normal operation.
- 7) **Signal output current I_A**
 $I_{A,max}$ is the maximum permissible sink current of the signal output.
Exceeding (e.g. short circuit) may cause irreparable damages.
- 8) **Start up time t_{STA}**
Time between the start up of the normal operation after power on and the first valid output signal.
- 9) **Offset $V_{out,0}$**
The offset $V_{out,0}$ is the signal output $V_A(p = 0)$ at zero pressure.
- 10) **Signal span (Full Scale)**
Simple output: $V_{FS} = FS = V_{out}(p_{r,max}) - V_{A0}$
- 11) **Non-linearity L (including pressure hysteresis)**
The non-linearity is the deviation of the real sensor characteristic $V_A = f(p)$ from the ideal straight line. It can be approximated by a polynomial of second order, with the maximum at $p_x = p_r / 2$.
The equation to calculate the non-linearity is:

$$L = \frac{V_{out}(p_x) - V_{out,0} - \frac{p_x}{p_r} (V_{out}(p_r) - V_{out,0})}{V_{out}(p_r) - V_{out,0}}$$
- 12) **Response time t_{10-90}**
Delay between a pressure change (10 ... 90% p_r) and the corresponding signal output change (10 ... 90% FS).
- 13) **Resolution r_{OUT}**
The resolution of the output DAC (digital/analog converter). For ratiometric output only 80% of DAC range is used.

Preliminary data

Cautions and warnings

Storage

The pressure sensors should be stored in their original packaging. They should not be placed in harmful environments such as corrosive gases nor exposed to heat or direct sunlight, which may cause deformations. Similar effects may result from extreme storage temperatures and climatic conditions. Avoid storing the pressure sensors in an environment where condensation may form or in a location exposed to corrosive gases, which will adversely affect their performance.

Soldering

The thermal capacity of the pressure sensor is normally low, so steps should be taken to minimize the effects of external heat. High temperatures may lead to damage or changes in characteristics.

A no-clean flux should normally be used. Flux removal processes are not recommended.

Avoid rapid cooling due to dipping in solvent. Note that the output signal may change if pressure is applied to the terminals during soldering.

Operation

Media compatibility with the pressure sensors must be ensured to prevent their failure (see page 2).

The use of other media can cause damage and malfunction.

Never use them in atmospheres containing explosive liquids or gases.

Ensure pressure equalization to the environment, if relative pressure sensors are used.

Avoid operating the pressure sensors in an environment where condensation may form or in a location exposed to corrosive gases. These environments adversely affect their performance.

If the operating pressure is not within the rated pressure range, it may change the output characteristics.

Be sure that the applicable pressure does not exceed the overpressure, it may damage the pressure sensor.

Do not exceed the maximum rated supply voltage, it may damage the pressure sensor.

Do not exceed the rated storage temperature range, it may damage the pressure sensor.

Temperature variations in both the ambient conditions and the media (liquid or gas) can affect the accuracy of the output signal from the pressure sensors. Be sure to check the operating temperature range and thermal error specification of the pressure sensors to determine their suitability for the application.

Connections must be wired in accordance with the terminal assignment specified in this publication.

Care should be taken as reversed pin connections can damage the pressure sensors or degrade their performance.

Contact between the pressure sensor terminals and metals or other materials may cause errors in the output characteristics.

This listing does not claim to be complete, but merely reflects the experience of EPCOS AG.

Important notes

The following applies to all products named in this publication:

1. Some parts of this publication contain **statements about the suitability of our products for certain areas of application**. These statements are based on our knowledge of typical requirements that are often placed on our products in the areas of application concerned. We nevertheless expressly point out **that such statements cannot be regarded as binding statements about the suitability of our products for a particular customer application**. As a rule, EPCOS is either unfamiliar with individual customer applications or less familiar with them than the customers themselves. For these reasons, it is always ultimately incumbent on the customer to check and decide whether an EPCOS product with the properties described in the product specification is suitable for use in a particular customer application.
2. We also point out that **in individual cases, a malfunction of electronic components or failure before the end of their usual service life cannot be completely ruled out in the current state of the art, even if they are operated as specified**. In customer applications requiring a very high level of operational safety and especially in customer applications in which the malfunction or failure of an electronic component could endanger human life or health (e.g. in accident prevention or life-saving systems), it must therefore be ensured by means of suitable design of the customer application or other action taken by the customer (e.g. installation of protective circuitry or redundancy) that no injury or damage is sustained by third parties in the event of malfunction or failure of an electronic component.
3. **The warnings, cautions and product-specific notes must be observed.**
4. In order to satisfy certain technical requirements, **some of the products described in this publication may contain substances subject to restrictions in certain jurisdictions (e.g. because they are classed as hazardous)**. Useful information on this will be found in our Material Data Sheets on the Internet (www.epcos.com/material). Should you have any more detailed questions, please contact our sales offices.
5. We constantly strive to improve our products. Consequently, **the products described in this publication may change from time to time**. The same is true of the corresponding product specifications. Please check therefore to what extent product descriptions and specifications contained in this publication are still applicable before or when you place an order. We also **reserve the right to discontinue production and delivery of products**. Consequently, we cannot guarantee that all products named in this publication will always be available. The aforementioned does not apply in the case of individual agreements deviating from the foregoing for customer-specific products.
6. Unless otherwise agreed in individual contracts, **all orders are subject to the current version of the "General Terms of Delivery for Products and Services in the Electrical Industry" published by the German Electrical and Electronics Industry Association (ZVEI)**.
7. The trade names EPCOS, BAOKE, Alu-X, CeraDiode, CSMP, CSSP, CTVS, DSSP, MiniBlue, MKK, MLSC, MotorCap, PCC, PhaseCap, PhaseCube, PhaseMod, SIFERRIT, SIFI, SIKOREL, SilverCap, SIMDAD, SIMID, SineFormer, SIOV, SIP5D, SIP5K, ThermoFuse, WindCap are **trademarks registered or pending** in Europe and in other countries. Further information will be found on the Internet at www.epcos.com/trademarks.