



## UltraCap<sup>®</sup>

Single cell  
600 F/ 2.5 V

**Series/Type:**

**Ordering code:** B49410B2605Q000

**Date:** March 2005

© EPCOS AG 2005. Reproduction, publication and dissemination of this data sheet, enclosures hereto and the information contained therein without EPCOS' prior express consent is prohibited.

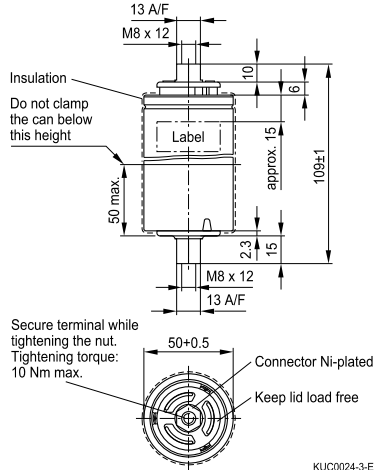
Purchase orders are subject to the General Conditions for the Supply of Products and Services of the Electrical and Electronics Industry recommended by the ZVEI (German Electrical and Electronic Manufacturers' Association), unless otherwise agreed.

**Features**

- Screw terminal M8 × 12
- Power type
- Insulated with polyurethane
- Short-circuit-proof

**Note**

- Do not put into fire!
- Do not open the capacitor!
- To avoid health and fire hazards, do not operate the capacitor beyond the voltage or temperature limits given in the data sheet. Any excess may also result in a reduction of lifetime.
- Please pay also attention to the transport and waste disposal instructions in chapter "Cautions".

**Dimensional drawing**


KUC0024-3-E

Dimensions in mm

**Electrical specifications**

Rated capacitance	( $T_A = 25\text{ °C}$ ; DCC) <sup>1)</sup>	$C_R$	600	F
Tolerance of $C_R$			-10/+30	%
Rated voltage	( $T_A = 25\text{ °C}$ )	$V_R$	2.5	V
Capacity			420	mAh
Specific power	(IEC 62391-2)		3.2	kW/kg
Specific power	(IEC 62391-2)		3.7	kW/l
Stored energy	( $V = V_R$ )	E	1875	J
Specific energy	( $V = V_R$ )		2.9	Wh/kg
Specific energy	( $V = V_R$ )		3.3	Wh/l
Surge voltage		$V_{\text{surge}}$	2.8	V
Maximum series resistance	( $T_A = 25\text{ °C}$ ; 1 kHz)	ESR	600	$\mu\Omega$
Maximum series resistance	( $T_A = 25\text{ °C}$ ; 50 mHz)	ESR <sub>DC</sub>	1300	$\mu\Omega$
Weight			180	g
Volume	(without terminals)		0.16	l
Operating temperature range		$T_{\text{op}}$	-30/+70	°C
Storage temperature	( $V = 0\text{ V}$ )	$T_{\text{st}}$	-40/+70	°C
Lifetime (hours) <sup>2)</sup>	( $T_A = 25\text{ °C}$ ; $V = V_R$ )		90000	h
Lifetime (cycles) <sup>3)</sup>	( $T_A = 25\text{ °C}$ ; $I = 25\text{ A}$ )		500000	cycles

1) DCC: discharging with constant current.

 2) Requirements:  $|\Delta C/C_R| \leq 30\%$ ,  $\text{ESR} \leq 2$  times of specified limit,  $I_{\text{leak}} \leq 2$  times of initial value.

 3) Requirements:  $|\Delta C/C_R| \leq 30\%$ ,  $\text{ESR} \leq 2$  times of specified limit,  $I_{\text{leak}} \leq 2$  times of initial value (1 cycle: charging to  $V_R$ , 30 s rest, discharging to  $V_R/2$ , 30 s rest).