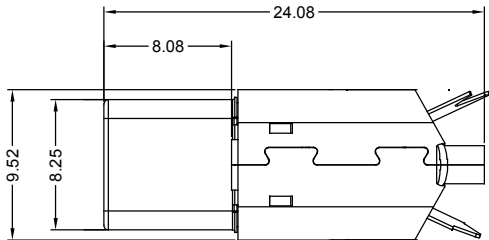
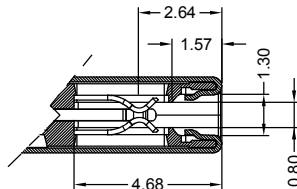
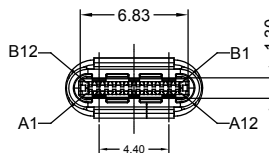
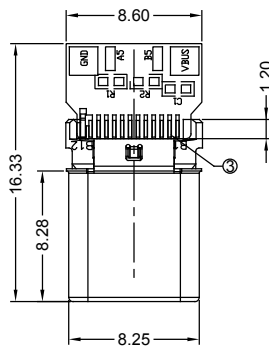
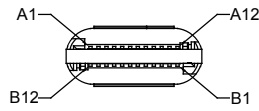


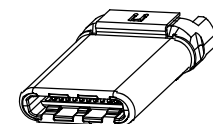
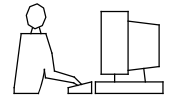
A12	A11	A10	A9	A8	A7	A6	A5	A4	A3	A2	A1
GND	RX2+	RX2-	Vbus	SBU1	D-	D+	CC	Vbus	TX1-	TX1+	GND
GND	TX2+	TX2-	Vbus	Vconn			SBU2	Vbus	RX1-	RX1+	GND
B1	B2	B3	B4	B5	B6	B7	B8	B9	B10	B11	B12



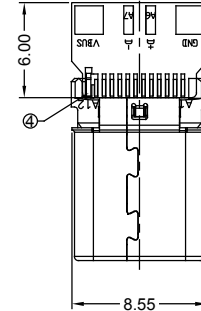
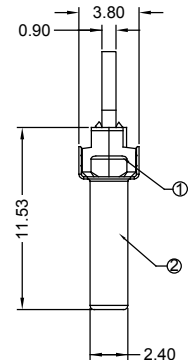
TOLERANCE UNLESS OTHERWISE SPECIFIED IN MM:  
 0.0 ± 0.38 ANGLE ±3°  
 0.00 ± 0.25  
 0.000 ± 0.13



THIS IS A C.A.D. GENERATED DRAWING  
 DO NOT MAKE MANUAL REVISIONS TO MASTER.



ISSUE NUMBER	
ORIGINAL	①
REDRAWN R.STA.MONICA	②
DIMS UPDATE C.B	③
PLATING OPTIONS UPDATE C.B	④



NOTES:

1. SPECIFICATIONS

- 1.1 Voltage: 30 V AC (RMS)
- 1.2 Current Rating: 3.0A for Vbus and corresponding GND  
0.25A for all other contacts
- 1.3 Contact Resistance: 30 Milliohms Max. for Vbus and GND  
50 Milliohms Max. for all other contacts
- 1.4 Insulation Resistance: 100 Megohms Min.
- 1.5 Dielectric Withstanding Voltage: 100V AC/Minute
- 1.6 Total Mating Force: 5N~20N at 12.5mm/sec. Max.
- 1.7 Total Unmating Force: 8N~20N at 12.5mm/sec. Max.
- 1.8 Operating Temperature: -55°C to +85°C

2. MATERIAL:

- 2.1 Housing: Thermoplastic, UL 94V-0, Black Color
- 2.2 Shell: Stainless Steel all over Nickel Plating
- 2.3 Contact: Copper Alloy with Gold Plating on Contact Area, all over Nickel Plating
- 2.4 GND Latch: Stainless Steel all over Nickel Plating Tab with Lead Free Tin Alloy
- 2.5 Back Shell: Stainless Steel all over Nickel Plating

3. PART NUMBER:

- 690-024-260-900 for Gold flash plating
- 690-024-360-900 for 15µ" Gold



THIS SERIES FULLY CONFORMS TO THE EUROPEAN UNION DIRECTIVES 2011/65/EU FOR RoHS COMPLIANCE.

**EDAC** EDAC INC  
 TORONTO, ONTARIO  
 CANADA  
 YOUR CONNECTION TO QUALITY & SERVICE

THESE DRAWINGS AND SPECIFICATIONS ARE THE PROPERTY OF EDAC INC., AND SHALL NOT BE REPRODUCED, OR COPIED OR USED AS THE BASIS FOR THE MANUFACTURE OR SALE OF APPARATUS WITHOUT WRITTEN PERMISSION.

<h1>USB 3.1 TYPE C TO 2.0 PLUG CONNECTOR</h1>		ACAD REFERENCE NO.: 690-024-260-900	
		DRAWN: R.STA.MONICA	DATE: SEPT.15/2015
		CHECKED:	DATE:
		PART NUMBER	
		<b>SEE DRAWING</b>	SHEET 1 OF 1
		DRAWING NUMBER	ISSUE
		<b>690-024-260-900</b>	4