



Powering Business Worldwide

TECHNICAL DATA

RANGE TRACTION

REF. SRF1000

CURRENT RATING

2-30 AMPS

SPECIFICATION

DRG.No. 5785109

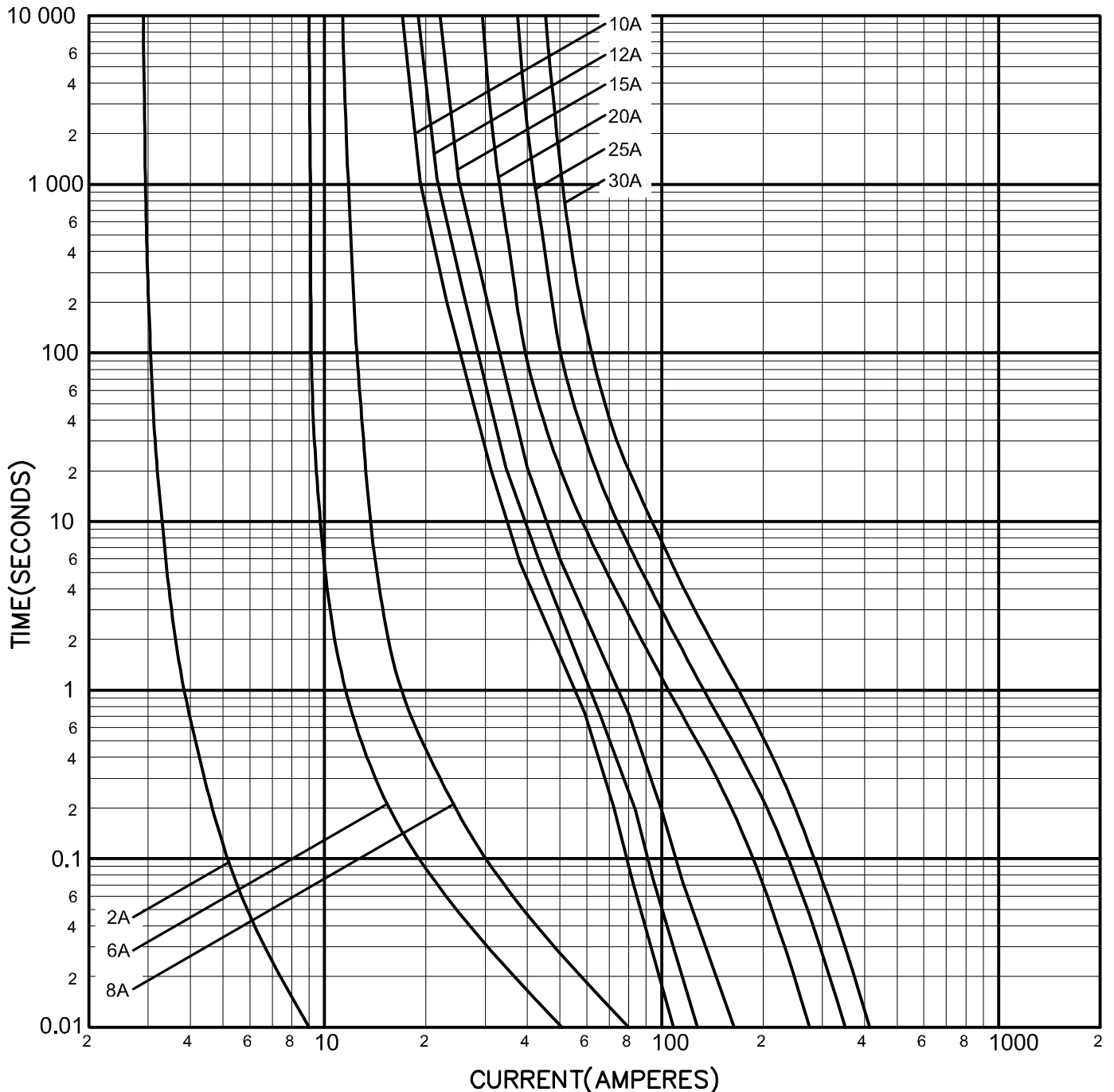
DRN DATE May-85

REV.No. F) BRAND LOGO UPDATED FROM COOPER TO EATON

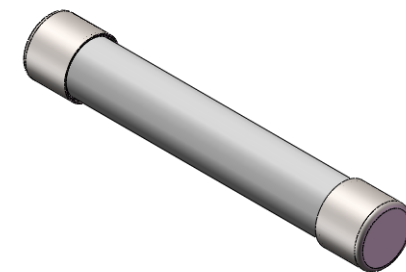
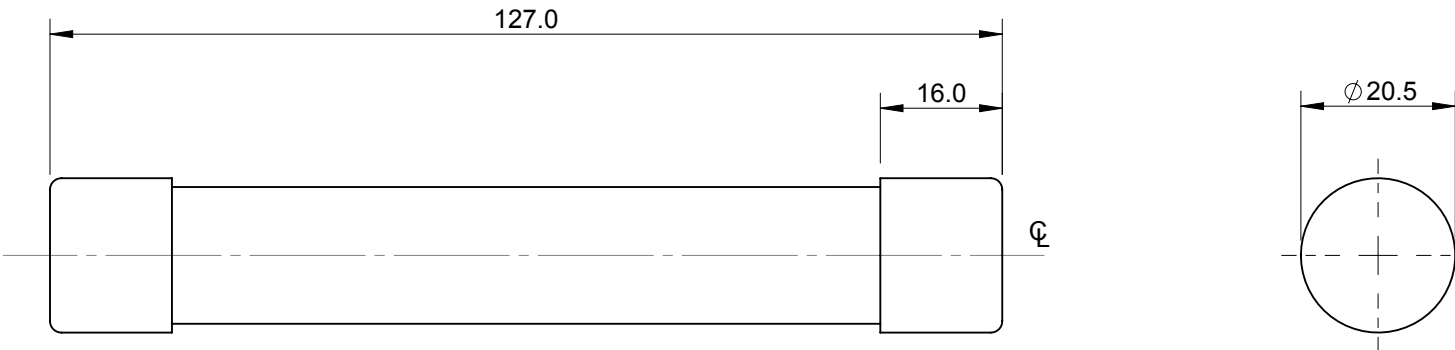
ECN No. BUEB19874

REV DATE 13-09-2017


Rating	Power loss (watts)	Energy Integrals (A ² s)			
		Pre-arcing	Total AT 1000Vd.c		
2SRF1000	4.4	0.8	2.4		
6SRF1000	6.7	27	81		
8SRF1000	7.6	64	192		
10SRF1000	3.0	118	277		
12SRF1000	3.4	170	380		
15SRF1000	5.0	209	500		
20SRF1000	5.9	675	1550		
25SRF1000	6.5	1200	2760		
30SRF1000	7.5	1850	4300		



REV	DESCRIPTION	BY	DATE	CHANGE NO.
C	DRAWING UPDATED WITH EATON TEMPLATE	EDK	14/05/2016	BUEI4519



CATEGORY OF DUTY : - 1000Vd.c

MODEL VERSION: 00	UNLESS OTHERWISE SPECIFIED, ALL DIMENSIONS ARE IN MILLIMETERS.		TITLE				 <i>Powering Business Worldwide</i>
	TOLERANCES UNLESS OTHERWISE SPECIFIED: GENERAL $\pm 0.4\text{mm}$ ANGULAR $\pm 1^\circ$		OUTLINE FOR SRF1000 FUSE LINKS (2-30A)				
MODEL SOURCE FILE: 5778871	UNCONTROLLED COPY		DRAWN BY: RAG	DATE: 14/06/2013	SCALE: NTS	ANGLE: THIRD	SIZE: A4
	THIS DRAWING IS CONFIDENTIAL AND THE COPYRIGHT OF EATON AND MUST NOT BE COPIED OR PASSED ON TO A THIRD PARTY WITHOUT WRITTEN CONSENT		MATERIAL: VARIOUS		FINISH: NONE		EATON Burton-on-the-Wolds, Leics, LE12 5TH Tel +44 1509 882 600
					DWG NO: 5778871		REV: C SHEET: 1 OF 1