



TECHNICAL  
DATA

Bussmann

RANGE TRACTION

REF. KTH

CURRENT RATING

3-65 AMPS

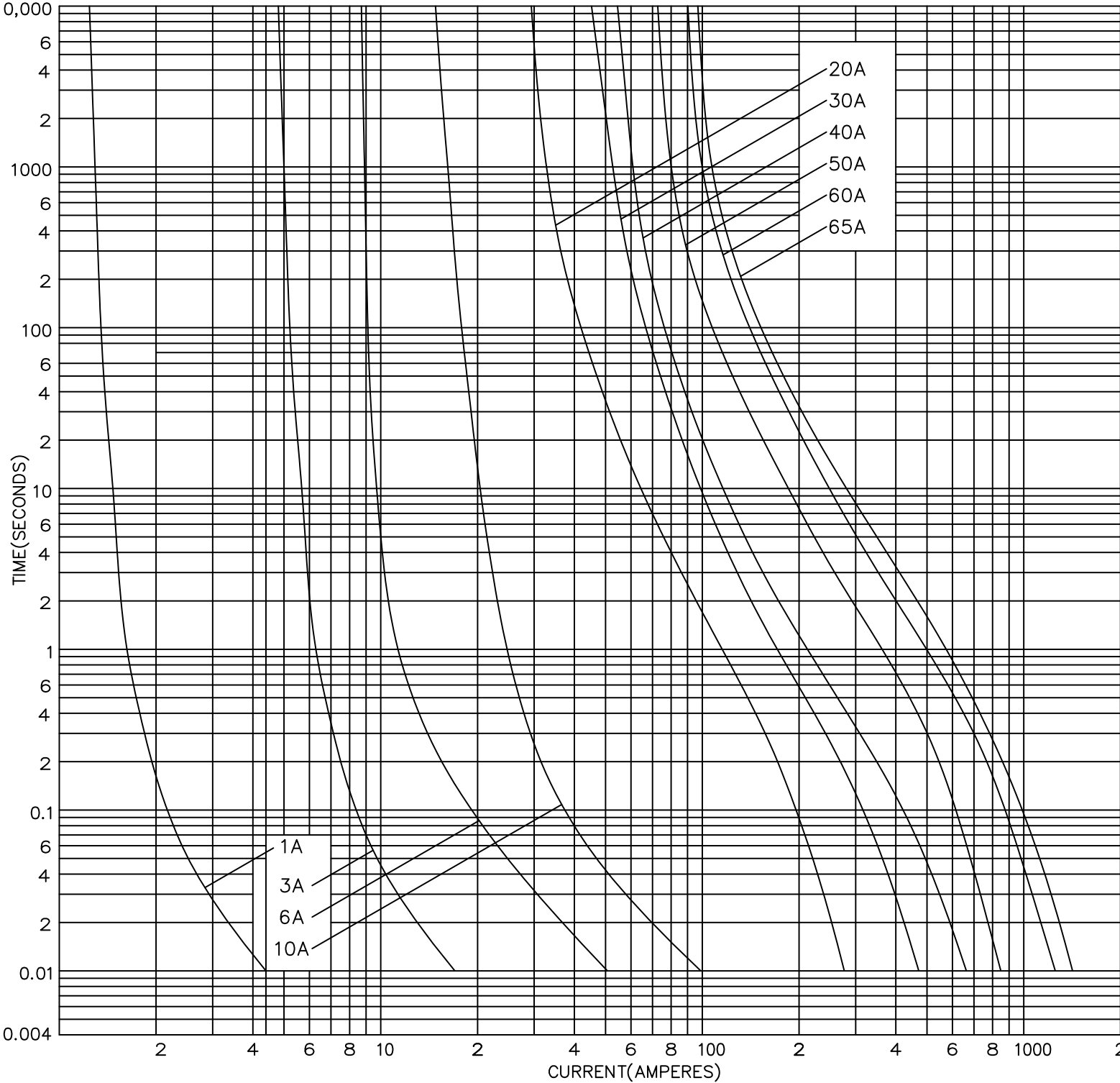
SPECIFICATION

BRITISH RAIL

DRG. No. E5785108  
Rev B, Aug 00

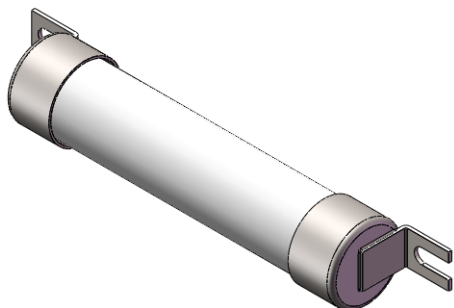
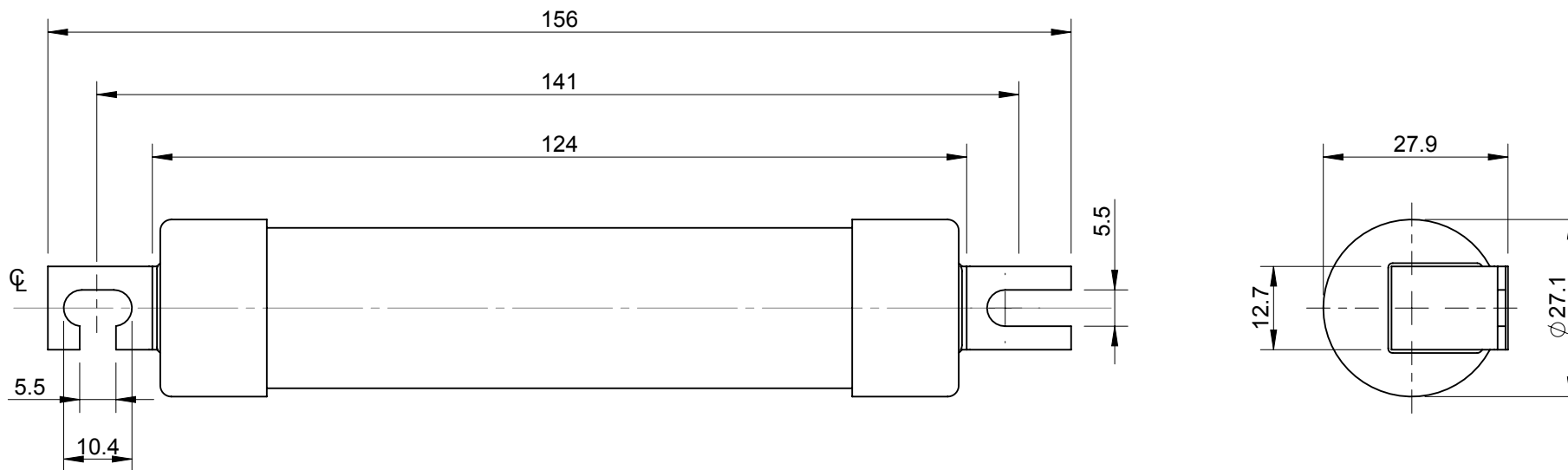
DATE APRIL 1987


RATING AND TYPE	I <sup>2</sup> t (AMPERE <sup>2</sup> SECONDS)			NOM. WATTS LOSS
	PRE- ARCING	TOTAL AT 1000Vd.c	TOTAL AT 1200Va.c	
1KTH	0.2	0.7	1	1.7
3KTH	3.1	9.3	10	3.9
6KTH	27	81	86	6.4
10KTH	110	320	350	9.0
20KTH	675	1,550	1,650	5.6
30KTH	1,850	4,300	4,600	7.1
40KTH	3,650	8,500	9,000	10.0
50KTH	7,500	17,500	18,000	9.0
60KTH	14,500	34,000	36,000	11.0
65KTH	19,000	44,000	47,000	10.0



ITEM No. 5778861

REV	DESCRIPTION	BY	DATE	CHANGE NO.
C	NOMINAL DIMENSIONS UPDATED	JW	10/11/2015	BUEB19366



MODEL VERSION: 00	UNLESS OTHERWISE SPECIFIED, ALL DIMENSIONS ARE IN MILLIMETERS.		TITLE  OUTLINE FOR KTH FUSE LINKS (3-65A)					 <i>Powering Business Worldwide</i>	
	TOLERANCES UNLESS OTHERWISE SPECIFIED: GENERAL $\pm 0.4\text{mm}$ ANGULAR $\pm 1^\circ$								
	UNCONTROLLED COPY		DRAWN BY: RAG	DATE: 14/06/2013	SCALE: NTS	ANGLE: THIRD	SIZE: A4	EATON Burton-on-the-Wolds, Leics, LE12 5TH Tel +44 1509 882 600	
THIS DRAWING IS CONFIDENTIAL AND THE COPYRIGHT OF EATON AND MUST NOT BE COPIED OR PASSED ON TO A THIRD PARTY WITHOUT WRITTEN CONSENT		MATERIAL:  VARIOUS		FINISH:  NONE					
MODEL SOURCE FILE: 5778861	DWG NO: 5778861					REV: C	SHEET: 1 OF 1		