



# DigiCube

What to specify...

1. Pre-filter

2. Main filter

3. Interfacing Kit

## Digikey Fume Extraction

<b>Voltage</b>	<b>120V ±10%</b>		
<b>Vacuum Control</b>	<b>072190</b>		
Wattage	0.107 kW		
Frequency	50 Hz / 60 Hz		
Cabinet height	365 mm		
Cabinet width (not inc hose)	290 mm		
Cabinet depth (not inc hose)	282 mm		
Cabinet weight (inc filters)	17 Kg		
Construction	Precision engineered units. High performance continuous run brushless motors. Quick and simple to relocate.		

1

### Pre-filter Pad



Options:  
F5

Code:  
200225 (Pack of 4)

2

### Main filter



Options:  
HEPA/Chemical (std)

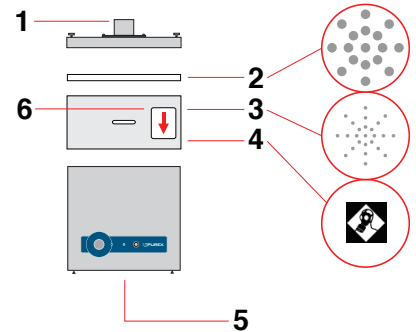
Code:  
110536



#### Single arm system supplied with:

- 1 x Filter + pre-filter pad
- 1 x 51mm x 2m flexible hose [black]
- 2 x Connecting cuffs [black]
- 1 x Screwed bracket
- 1 x 38mm stainless steel flexible arm and valve + 38mm pen nib nozzle

Code:  
100294



#### Legend:

- 1) Air inlet - 57mm ID - 62mm OD
- 2) Pre-filter.
- 3) Main Filter (HEPA location).
- 4) Main Filter (Carbon location).
- 5) Clean air returned to workplace.
- 6) Filter identification label.

## Controls

### Visual and Audible Filter Blocked Warning

Alerts the operator when a filter starts to block so that a replacement filter can be acquired and downtime can be avoided.

### LED Filter Status

Green = Filter OK  
 Yellow = Filter nearly full  
 Red = Filter full, replacement required

## System Features...

- Automatic electronic flow control - maintains a constant extraction rate even as the filter blocks
- Adjustable airflow
- VariColour filter blocked warning system
- Low capital and running costs
- Quick change pre-filters deliver longer filter life
- Submicronic (HEPA) filtration removes 99.997% of particles down to 0.3 microns
- Activated carbon filtration removes harmful gas
- Simple to install and quiet in operation
- Easy to relocate

## Includes:

- 1 x Main filter
- 1 x Pre-filter pad
- 1 x Arm Kit
- 1 x Power cable