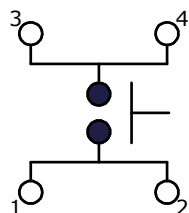
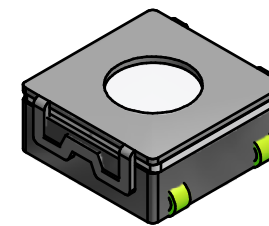
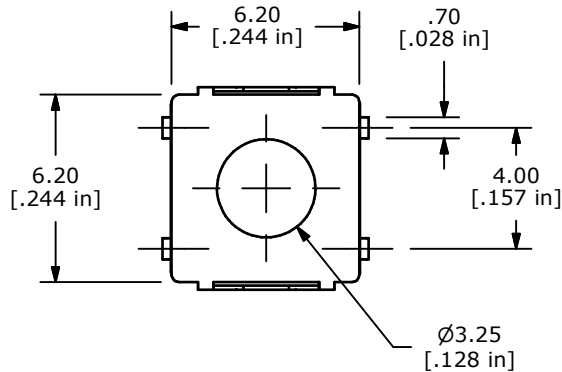


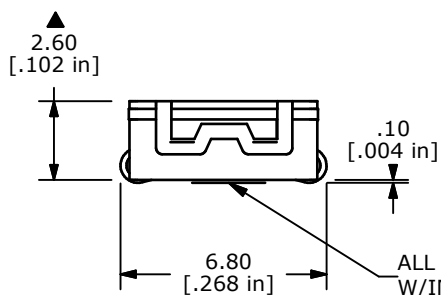
RECOMMENDED P.C.B. LAYOUT



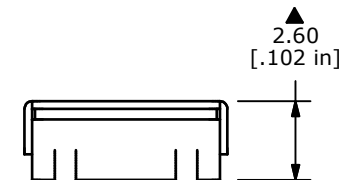
CIRCUIT: SPST

NOTES:

1. ALL DIMENSIONS IN MM [INCH]
2. GENERAL TOLERANCE:  $x.x \pm 0.4$   
 $x.xx \pm 0.25$
3. TERM. NOS. FOR REF. ONLY
4. RATING: 50mA, @12V DC
- ▲ 5. OPERATING FORCE:  $260 \pm 50gf$
6. TRAVEL:  $0.25 +0.2/-0.1MM$
7. CONTACT RESISTANCE:  $100 m\Omega MAX$  C
8. PACKAGING: TAPE AND REEL, 1900 PCS PER REEL
- ▲ 9. CONTACT MATERIAL: SILVER
10. ▲ DENOTES CRITICAL PARAMETER
11. 2002/95/EC (ROHS) COMPLIANT
12. MECHANICAL/ELECTRICAL LIFE: 100,000 CYCLES
13. OPERATING TEMPERATURE:  $-20^{\circ}C$  TO  $70^{\circ}C$  C



ALL TERMINALS MUST BE CO-PLANAR W/IN 0.10 [.004] TOTAL



C	21024	100mΩ WAS 100Ω, ADD TEMP NOTE	2/12/13	EBP
B	16716	UPDATED NOTES, DIMENSIONS	11/29/06	TN
A	15986	NEW PART RELEASE	4/27/06	CT
REV	PCR NO	DESCRIPTION	DATE	BY

THE INFORMATION CONTAINED IN THIS DOCUMENT IS PROPRIETARY TO E-SWITCH AND IS NOT TO BE COPIED OR TRANSFERRED



TITLE TL3304NF260QJ

SCALE	DATE	DR	DWG	REV
4:1	11/29/2006	TN	P010545	C