

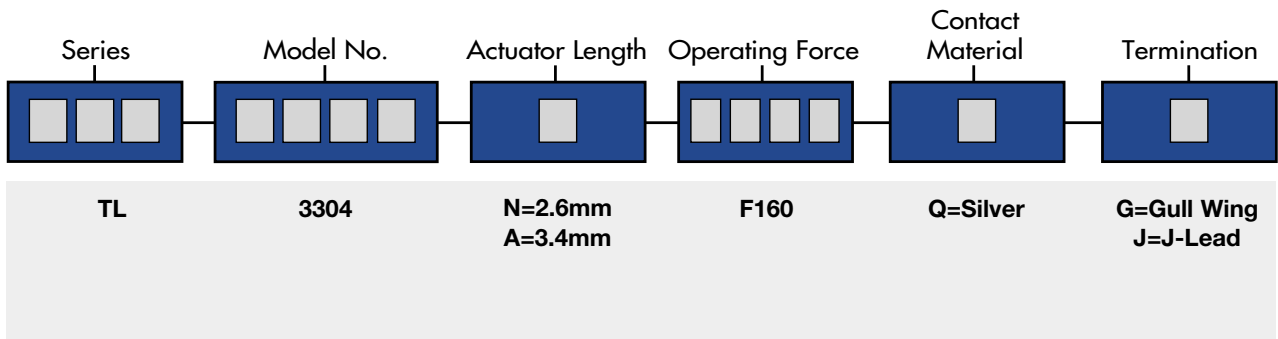
**SPECIFICATIONS**

Rating:	50mA @ 50 VDC
Mechanical Life:	100,000 cycles typical
Contact Resistance:	20mΩ max. initial @ 2-4 VDC, 100mA
Insulation Resistance:	100MΩ min.
Dielectric Strength:	1,000 Vrms at sea level
Operating Force:	160 ± 50 gf

**MATERIALS**

Housing:	Polyphenylene Sulfide (PPS)
Actuator:	Rubber
Cover:	Stainless steel
Contacts:	Silver-clad phosphor bronze
Terminals:	Silver-clad brass

HOW TO ORDER



EXAMPLE



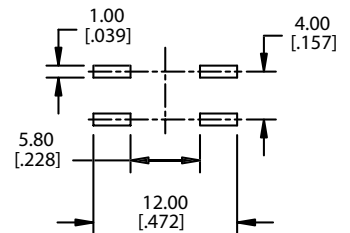
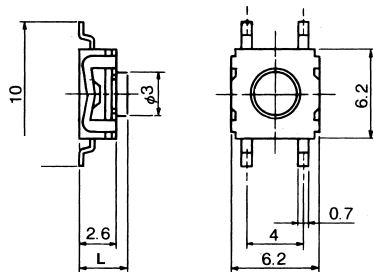
SPECIFICATIONS SUBJECT TO CHANGE WITHOUT NOTICE.

**Gull Wing Termination**

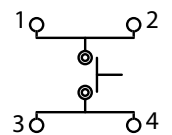
P.C. MOUNTING



**TL 3304N**  
Gull Wing



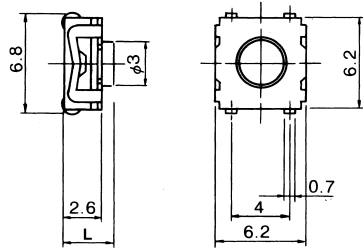
**Schematic**



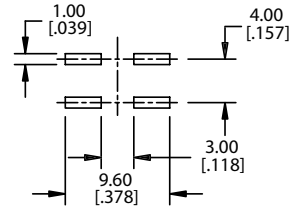
**SURFACE MOUNT TACT SWITCHES**



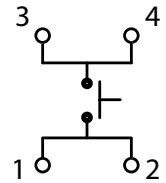
**J-Lead Termination**



**P.C. MOUNTING**



**Schematic**



**ACTUATOR OPTIONS**

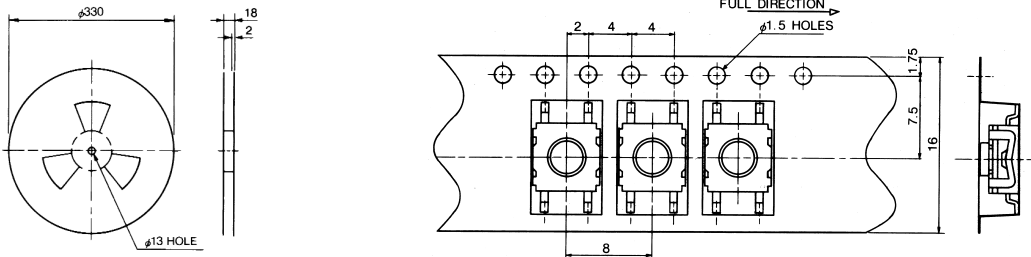
Actuator Length (L)
N = 2.6 mm
A = 3.4 mm

**TERMINATION**

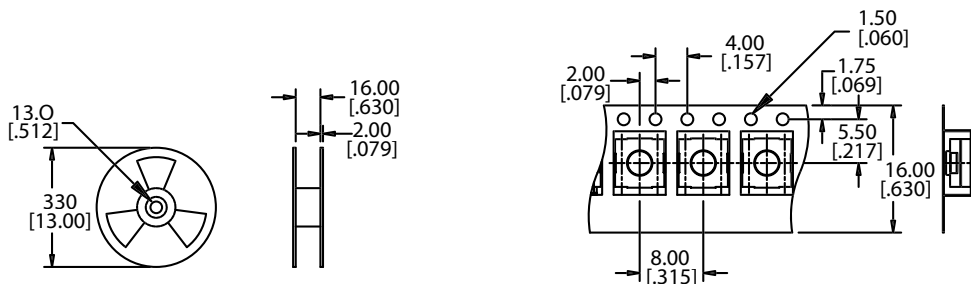
Termination
G = Gull Lead
J = J-Lead

**STANDARD REELS**

**Gull Wing**



**J-Lead**



SPECIFICATIONS SUBJECT TO CHANGE WITHOUT NOTICE.