



## GU2 SERIES SINGLE LED MODULE



### FEATURES / BENEFITS

- ▲ Onboard drive accepts low voltage input
- ▲ Long life, up to 60,000 hours
- ▲ Low 1.5 watt power consumption
- ▲ Low profile - ADA compliant
- ▲ Optional niche mounting box available for direct burial in concrete or ground
- ▲ Uses the latest LUXEON® Rebel LED technology
- ▲ ETL listed to UL2108 standards for dry, damp or wet locations
- ▲ IP67 rated for interior or exterior use
- ▲ 40 lumen output for white.  
Consult factory for additional options

### APPLICATIONS

Ideal for any difficult to maintain location low level pathway systems, architectural accent, staircases, decks, kitchens, etc. Easily mounts to wood, tile, stone, glass, stainless steel, etc

### MATERIALS/FINISH

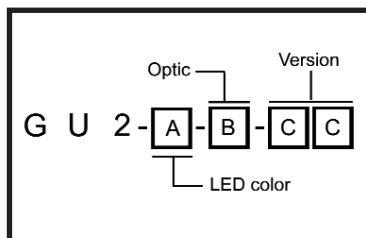
- ▲ Anodized aluminum base and "snap-on" top cover
- ▲ PMMA lens
- ▲ PTFE Lead Wires 20" (508mm) long, 20 AWG

### OPERATING CONDITIONS

- ▲ Runs off 8-24 VDC or 10-14 VAC
- ▲ Current draw = 0.128A@ 12 VDC, 1.5 watts
- ▲ Multiple modules can be connected in parallel for longer runs off a single supply.
- ▲ Ambient Temperature limits -30°C to +55°C  
(-22°F to +131°F)

### ORDERING INFORMATION

#### Guida 2 Base



| LED Color (A)                           | Optical Pattern (B) | Version (CC)                            |
|---|---------------------|---|
| C = Cool White 5300K / *40 lumen min    | D = Diffused        | "Blank" =<br>European Market<br>Version |
| N = Neutral White 4000K / *40 lumen min | S = Spot            |   |
| W = Warm White 3050K / *40 lumen min    |                     |   |
| R = Red                                 |                     | US =<br>North America<br>Version        |
| G = Green                               |                     |   |
| B = Blue                                |                     |   |
| A = Amber                               |                     |   |

Base & cover purchased separately

#### Guida 2 Covers

Series - Cover Type

GU - Dome  
GU - Flush  
GU - Eyelid

#### Mounting Box

GU-MBX = Euro version  
GU-MBX-US = US version

\* LED flux data is manufacturers test data @ 25°C T<sub>j</sub>. Light output at max acceptable ambient temp will be approximately 25-30% lower, depending on thermal conductivity of mounting surface and lens type.

Dialight Lumidrives

York House • Weatherby Road • Long Marston, York, YO26 7NH  
Tel: 0845 6346161 • Fax: 0845 6346160 • [www.dialight.com](http://www.dialight.com)

**PRIVATE LABEL  
OEM PROGRAM**

Dialight Corporation

1501 Route 34 South • Farmingdale, NJ 07727 USA  
Tel: (1) 732-919-3119 • Fax: (1) 732-751-5778 • [www.dialight.com](http://www.dialight.com)



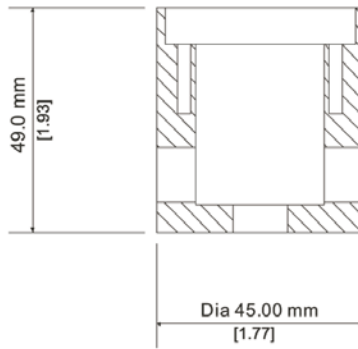
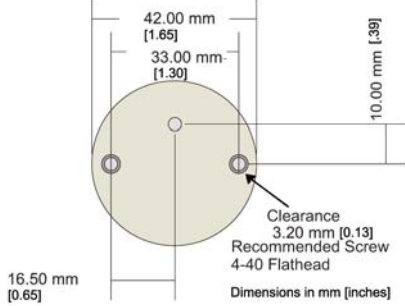
MDEXLUMGU2\_B

## MOUNTING INFORMATION

Mounting box for physical setting & stability. It is not waterproof, make connections with waterproof wire nuts.

### RECESS CUTOUT HOLE FOR FLUSH OR EYELID

Hole Depth = 8.4mm [0.33]



### Optional recessing mounting box

Openings for conduit on US version are:  
1/2" Dia, 14NPT

0.48" (12.12mm) non-threaded on Euro version

Dimensions in mm [inches]

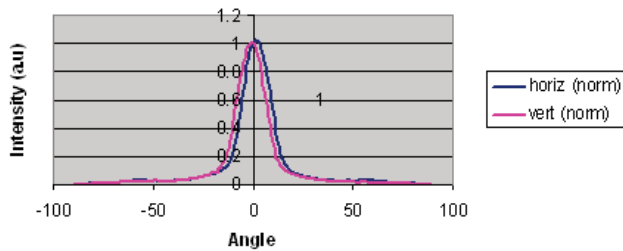
Optional recessing mounting box is compatible only with the Flush & Eyelid covers



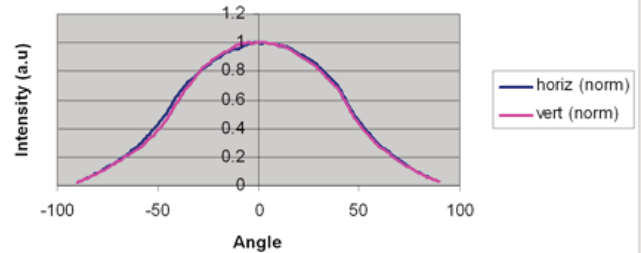
## PHOTOMETRIC DATA

IES files available upon request

### Guida Cool White Spot Lens (normalized data)

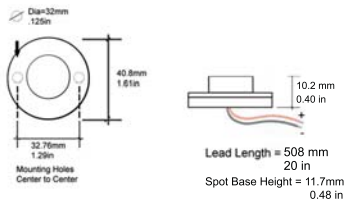


### Guida Cool White Diffused Lens (normalized data)

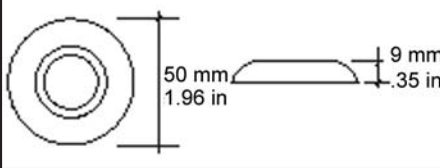


## MECHANICAL DIMENSIONS

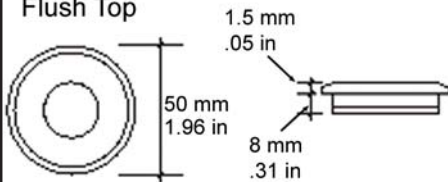
### Guida 2 Diffused Base



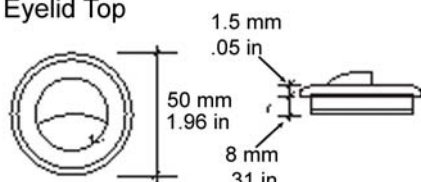
### Domed Top



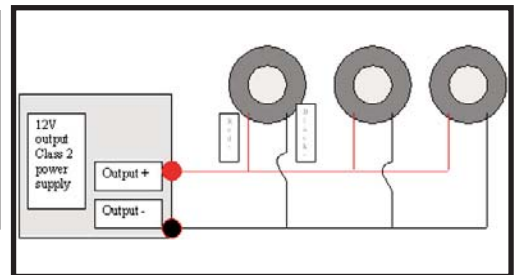
### Flush Top



### Eyelid Top



## WIRING DIAGRAM



Dialight reserves the right to make changes at any time in order to supply the best product possible.

Eyelid top not compatible with spot base optic

## PRIVATE LABEL OEM PROGRAM

### Dialight Lumidrives

York House • Weatherby Road • Long Marston, York, YO26 7NH

Tel: 0845 6346161 • Fax: 0845 6346160 • [www.dialight.com](http://www.dialight.com)



### Dialight Corporation

1501 Route 34 South • Farmingdale, NJ 07727 USA

Tel: (1) 732-919-3119 • Fax: (1) 732-751-5778 • [www.dialight.com](http://www.dialight.com)



MDEXLUMGU2\_B