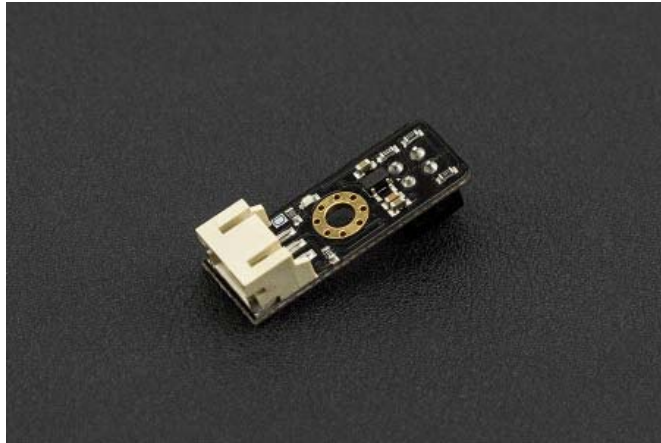




# Line Tracking Sensor for Arduino V4 SKU:SEN0017



## Contents

- [1 Introduction](#)
- [2 Specification](#)
- [3 Tutorial](#)
  - [3.1 Connection Diagram](#)
  - [3.2 Sample Code](#)

## Introduction

The DFRobot Line Tracking Sensor for Arduino can detect the white lines in black and black lines in white. The single line-tracking signals can provide a stable output signals TTL, so look for more accurate and more stable line. Optional multi-channel mix is easy to install with the necessary line-tracking robot sensors.

- Version Update

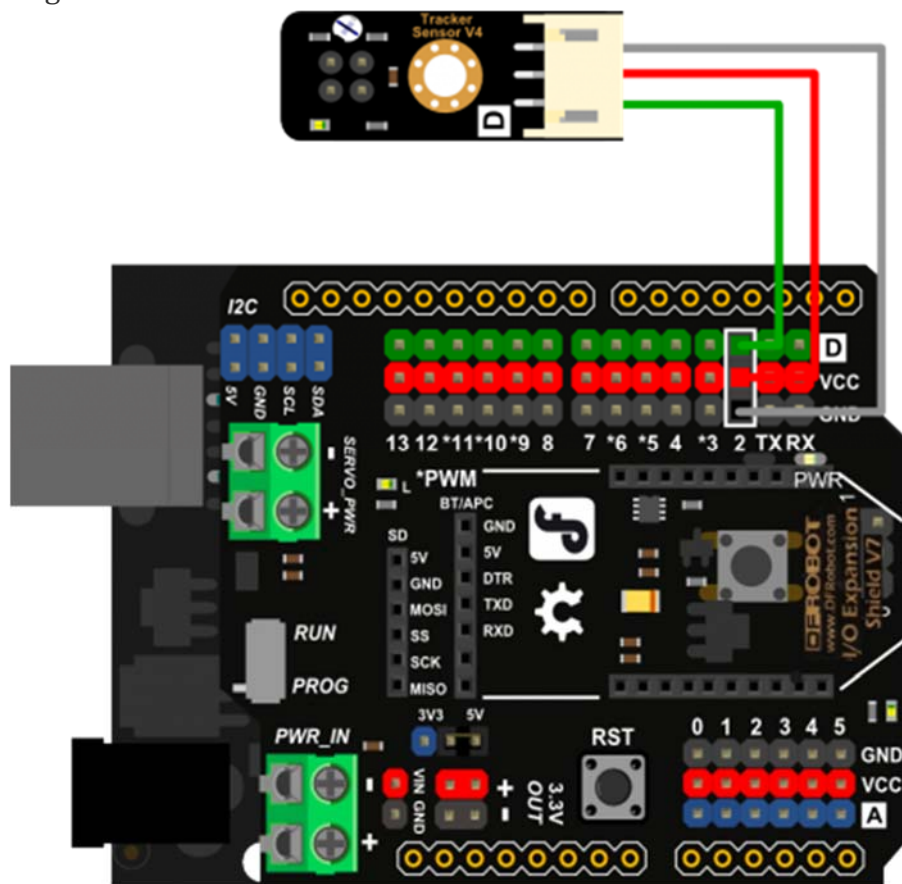
The best distance between objects such as ground and the sensor is 1-2 cm.  
V5 cancel the variable resistor, It is easy to use now.

## Specification

- Power supply: 3.3~5V
- Detecting Range: 1~2cm
- Operating current: <10mA
- Operating temperature range: 0°C ~ + 50°C
- Output interface: 3-wire interface (1 - signal, 2 - power, 3 - power supply negative)
- Output Level: TTL level (black line of low effective, high efficient white line)
- Module Size: 10mmx28mm
- Module Weight: About 10g

## Tutorial

### Connection Diagram



Line Tracking Sensor connection

### Sample Code

```
///Arduino Sample Code  
void setup()
```

```
{  
  Serial.begin(9600);  
}  
void loop()  
{  
  Serial.println(digitalRead(2)); // print the data from the sensor  
  delay(500);  
}
```