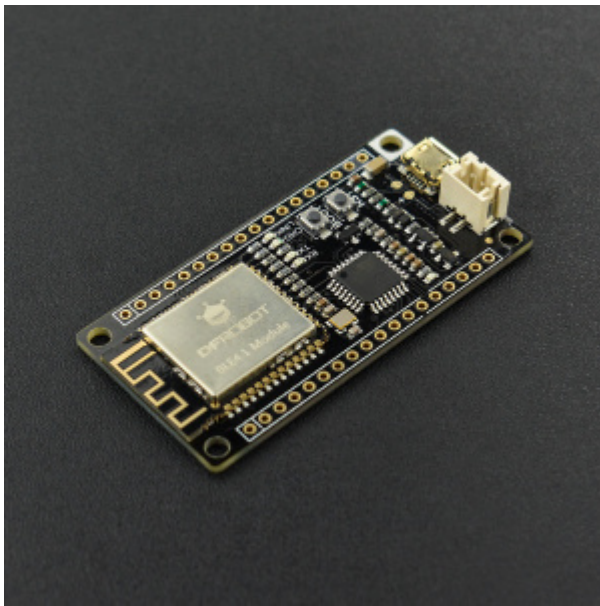


FireBeetle Board-328P with BLE4.1 SKU: DFR0492



Introduction

DFRobot FireBeetle series are low power consumption controllers designed for Internet of Things (IoT) development. This Bluetooth controller combines Bluetooth Low Energy 4.1 with Arduino controller, offering functions similar to the former Bluno series but with lower power consumption. FireBeetle BLE 4.1 is compatible with Bluno series (BLE 4.0) and performs much better. It equipped with more stable DIALOG Bluetooth 4.1 chip, supporting maximum 4Kbyte/s transmission rate and low power consumption (25uA POWER DOWN). It can be directly applied to low power consumption application such as wearable and intelligent tools and so on.

It also supports multiple Bluetooth cascade, KISS connection(approach connection) and compatible with Bluno series. Its connection can be realized by holding host BOOT and moving to the target peripheral device.

Features

- Support Arduino IDE program
- Support BLE 4.1 central and peripheral switch
- Support Bluetooth serial port data transmit
- Support Bluetooth peer to peer (P2P) wireless programming
- Support Bluetooth 4.1 multiple device cascade (maximum:4)
- Support Arduino Bluetooth library (support multiple Bluetooth connection)
- Support low power consumption Bluetooth (standby current: 25uA; enabled interrupt current: 70uA)
- Double interruption to wake up:
BLE4.1 awake Atmega328P by D2 (high level awake)
Atmega328P awake BLE4.1 by D3 (low level awake)
- Support KISS connection(approach connection)
- Support Bluetooth firmware update
- Support USB charge
- Support lithium battery power supply
- Equipped with status LEDs

Specification

- Processor: ATMEGA328P
- Bootloader: Arduino Pro or Pro Mini, ATmega328 (3.3V, 8MHz)
- Operating Current: 3.3V
- VCC I/O Voltage: 3.7V~5.5V
- Lithium Battery Voltage: 3.7V
- Support maximum 4Kbyte/s transmission rate (more device, lower rate)
- Support low power consumption: 25uA (POWER DOWN); 70uA (enabled interruption)
- Support maximum discharge current: 600mA (LDO-3.3V OUTPUT)
- Support maximum charge current: 400Ma
- Digital Interfaces: 14
- Analog Interfaces: 6
- SPI: 1
- I2C: 1
- UART: 1
- LED_BUILTIN: D13
- Interface Mode: 2.54mm (Pin/Female header), soldering free in default
- Dimension: 58 * 29 mm/ 2.28 * 1.14 inches

Board Overview

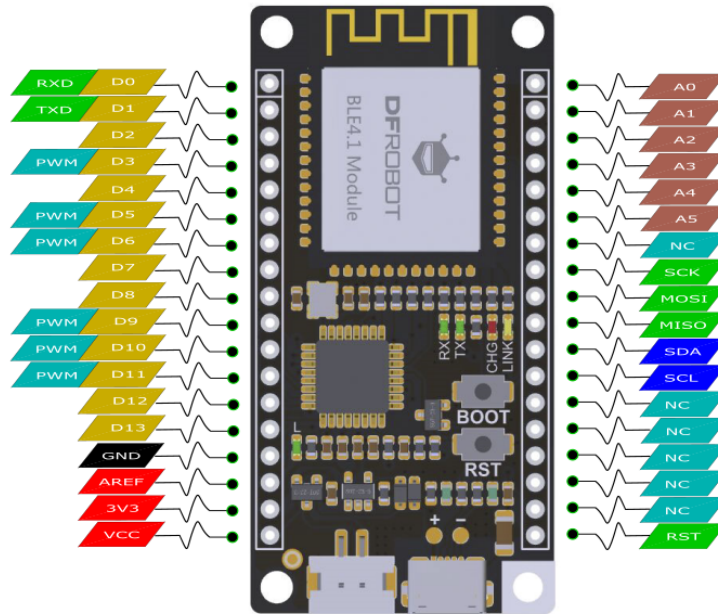



Fig1: FireBeetle Board-328P with BLE4.1 PinOUT

LED indicators

- RX: Serial data receiving indicator, light up when receive serial data
- TX: Serial data transmitting indicator, light up when send serial data
- CHG: Battery charge indicator: Flash without lithium battery; Light ON in charging; Light OFF when full charged
- LINK: a Bluetooth connect indicator; when Bluetooth connect to the device successfully, LINK will light for 3s and blink for every 3s, light OFF when disconnected.

Buttons

- **BOOT**: Bluetooth firmware update; enable KISS connection (approach connection).
Firmware update: please press and hold **BOOT** button and power-up (plug in USB), turning to the firmware update mode. For any enquiries, please refers to the part: Firmware Update.
Approach connection: please hold the central **BOOT** button when it is in the working mode, approaching the peripheral Bluetooth device and connect.
- **RST** Arduino Reset button

 **Note:** VCC is the output voltage of the power supply (USB power supply: 5V, lithium battery power supply: 3.7V)

Arduino Tutorial

Choose a suitable Arduino board

Considering low power consumption, we select **Arduino Pro Mini @3.3V 8MHz** as Bootloader for FireBeetle BLE4.1 microcontrollers.

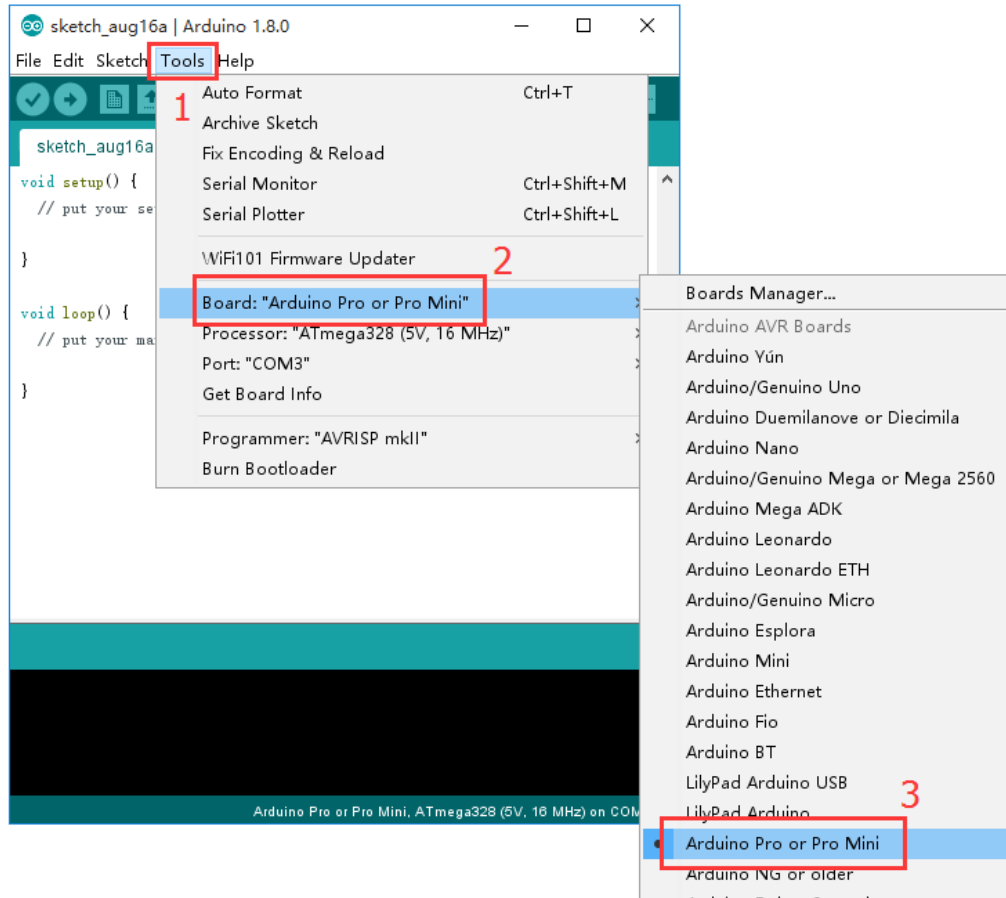


Fig2: FireBeetle Board-328P with BLE4.1

Special Note: Pro Mini uses 8MHz OXC0. Its processing speed is relatively slow for 115200-baud rate. The high baud rate may lead to unreadable code and packet loss etc. 9600-baud rate is recommended.

Low Power Consumption Mode

BLE 4.1 switch to low power consumption mode with AT command: **AT+LOWPOWER=ON**. The Bluetooth can still broadcast and connect in the low power mode. When the Bluetooth received data, it will awake automatically and send an interrupt signal to the chip: 328p. The interrupt pin here should be connected to D2 of 328p which is interrupt 0 in the code.

```

void wakeup(){
    sleep_disable();
    delay(2000);
}

void lowpower(){
    ADCSRA &= ~(1<<ADEN);/*turn off ADC*/
    TWCR &= ~(1<<TWEN);/* turn off TWI*/
    delay(10);

    set_sleep_mode(SLEEP_MODE_PWR_DOWN);/*set sleep mode to power down mode*/
    sleep_enable();/*enable sleep mode */
    MCUCR |= (1<<BODS|1<<BODSE);
    MCUCR = MCUCR & (~(1<<BODSE)) | (1<<BODS);
    sleep_cpu();/*enter sleep mode */
}

void setup() {
    attachInterrupt(0, wakeup, CHANGE);

    /* set interrupt method to trigger D2 to voltage change, callback function is wakeup( ), which means awake functions of the chip 328p*/
    lowpower();
}

void loop() {
    lowpower();
    delay(2000);
}

```

- In the low-power mode, the whole power consumption of the FireBeetle Board-328P with BLE4.1 board is about 70uA.
- Turn off the interrupt and other peripherals, the whole power consumption of the FireBeetle Board-328P with BLE4.1 board is about 25uA.

AT Command



To get a 'better' Bluetooth experience on BLE 4.1 modules, we highly recommend you to [update the newest firmware first](#).

AT is the abbreviation of attention. AT command is the communication command used to configure Bluetooth parameters. It begins with AT, end with **<CR+LF>** (carriage return and line feed).

- NOTE: **<CR+LF>** is not a part of AT Command.

AT Command List

AT Command	Function	Parameters <X>
AT+ROLE=<X>	Set Bluetooth mode	"?" Query Bluetooth working mode "ROLE_CENTRAL" Set as the central device "ROLE_PERIPHERAL" Set as the peripheral device
AT+NETWORK=<X>	Set network mode	"?" Query the network mode "P2P" Set to peer to peer connection "STAR" Set to star network
AT+MIN_INTERVAL=<X>	Set the minimum communication interval	"?" Query the current minimum communication interval (10~99999ms)
AT+MAX_INTERVAL=<X>	Set the maximum communication interval	"?" Query the current maximum communication interval (10~99999ms)
AT+BIND=<X>	Set binding Bluetooth address	"?" Query the current binding MAC address e.g.: 0x0017ea9397e1 Set Bluetooth MAC address in need
AT+CMODE=<X>	Set BLE connection mode	"?" Query the current connection mode "UNIQUE" Specify the connection mode "ANYONE" Set to free connection
AT+MAC=<X>	Query the Bluetooth address	"?" Query the current Bluetooth MAC address
AT+NAME=<X>	Set the name	"?" Query the Bluetooth device name "DFBLEduino2"

AT+SETTING=<X>	Modify/Reset to default <X> mode	"?" Query the current setting "DEFAULT" Reset to initial setting "DEFPERIPHERAL" Reset to initial slave setting "DEFCENTRAL" Reset to initial host setting
AT+USB_MONITOR=<X>	Turn the USB monitor ON/OFF	"?" Query the current USB monitor "ON" Turn on the USB monitor "OFF" Turn off the USB monitor
AT+HELP=<X>	Get help from AT command	"ALL" Query all AT commands help information
AT+NET_INF=<X>	Query device information in the current network	"?" Query device network information
AT+VERSION=<X>	Query the firmware version	"?" Query firmware version information
AT+RSSI=<X>	Query the RSSI value	"?" Query the RSSI value
AT+P<n>=<X>	Query & Set P(n, n=0,1,2,3...) status	"?" Set IO pins to input mode and query the voltage "1" Set IO pins to output mode and output HIGH voltage "0" Set IO pins to output mode and output LOW voltage
AT+WL=<X>	Query/Declare the White List	"?" Query the White List "NONE" Declare the White List
AT+LOWPOWER=<X>	Query & Set the low-power mode	"?" Query the low-power mode "ON" Turn on the low-power mode "OFF" Turn off the low-power mode
AT+EXIT	Exit the AT command mode	Exit the AT command mode

Configure the BLE through AT command

1. Open the Arduino IDE.
2. Select the correct serial port in Menu->Tool->Serial port
3. Open the Serial monitor (on the upper right of the IDE windows)
4. Select the "No line ending"(**①**) and 115200 baud(**②**) in the pull-down menu
5. Type "+++"(**③**) like this and press send button(**④**)

6. If the AT Command Mode is successfully access , you will receive "Enter AT Mode"(⑤) from it.

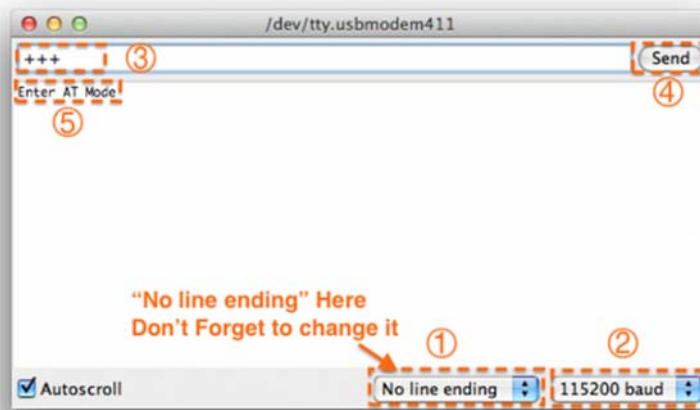


Fig1: +++ enter the AT CMD Mode

7. Select the "Both NL & CR"(①) and 115200 baud(②) in the pull-down menu
8. Type or copy the AT command in the dialog(③) like this and press send button(④)
9. If the BLE is successfully configured , you will receive "OK"(⑤) from it.

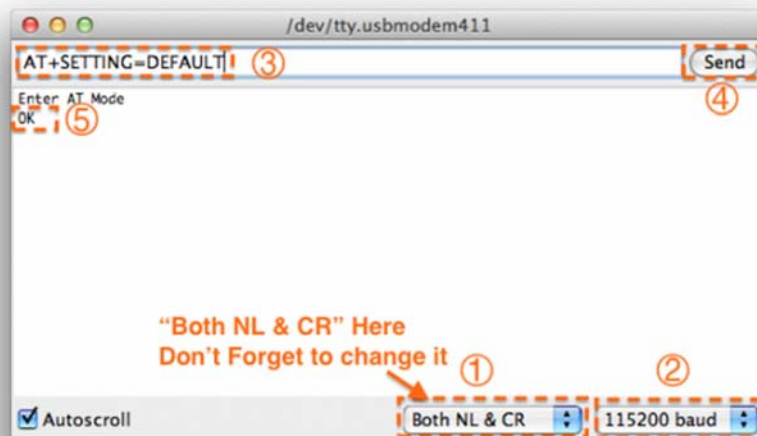
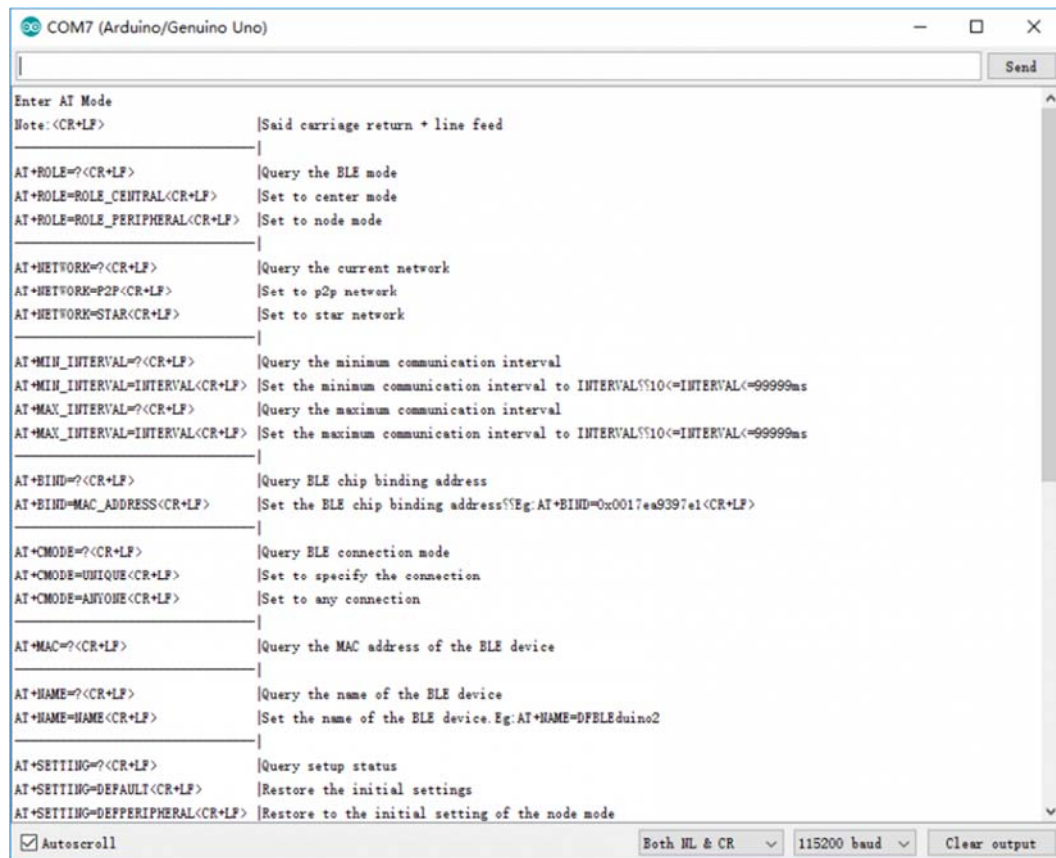


Fig1: enter the AT command, remember selecting the Both NL & CR

10. If received "ERROR CMD" instead, try sending it again or you should check whether the command is correct or not.
11. USE "AT+EXIT" to exit AT Mode

12. You can input **AT+HELP=ALL** to query all AT Command information



The screenshot shows the serial monitor window for an Arduino/Genuino Uno connected to COM7. The window displays the AT command list, which is a list of commands and their descriptions. The commands are listed in a table-like format with a vertical line separating the command from its description. The commands include: AT+ROLE=?, AT+ROLE=ROLE_CENTRAL, AT+ROLE=ROLE_PERIPHERAL, AT+NETWORK=?, AT+NETWORK=P2P, AT+NETWORK=STAR, AT+MIN_INTERVAL=?, AT+MIN_INTERVAL=INTERVAL, AT+MAX_INTERVAL=?, AT+MAX_INTERVAL=INTERVAL, AT+BIND=?, AT+BIND=MAC_ADDRESS, AT+CMODE=?, AT+CMODE=UNIQUE, AT+CMODE=ANYONE, AT+MAC=?, AT+NAME=?, AT+NAME=NAME, AT+SETTING=?, AT+SETTING=DEFAULT, and AT+SETTING=DEFFERIPHERAL. The window also has a 'Send' button at the top right and a 'Clear output' button at the bottom right. The baud rate is set to 115200 and the line ending is 'Both NL & CR'.

```
Enter AT Mode
Note:<CR+LF>          |Said carriage return + line feed
|
AT+ROLE=?<CR+LF>      |Query the BLE mode
AT+ROLE=ROLE_CENTRAL<CR+LF> |Set to center mode
AT+ROLE=ROLE_PERIPHERAL<CR+LF> |Set to node mode
|
AT+NETWORK=?<CR+LF>  |Query the current network
AT+NETWORK=P2P<CR+LF> |Set to p2p network
AT+NETWORK=STAR<CR+LF> |Set to star network
|
AT+MIN_INTERVAL=?<CR+LF> |Query the minimum communication interval
AT+MIN_INTERVAL=INTERVAL<CR+LF> |Set the minimum communication interval to INTERVAL%%10<=INTERVAL(<=99999ms
AT+MAX_INTERVAL=?<CR+LF> |Query the maximum communication interval
AT+MAX_INTERVAL=INTERVAL<CR+LF> |Set the maximum communication interval to INTERVAL%%10<=INTERVAL(<=99999ms
|
AT+BIND=?<CR+LF>     |Query BLE chip binding address
AT+BIND=MAC_ADDRESS<CR+LF> |Set the BLE chip binding address%%Eg:AT+BIND=0x0017ea9397e1<CR+LF>
|
AT+CMODE=?<CR+LF>   |Query BLE connection mode
AT+CMODE=UNIQUE<CR+LF> |Set to specify the connection
AT+CMODE=ANYONE<CR+LF> |Set to any connection
|
AT+MAC=?<CR+LF>    |Query the MAC address of the BLE device
|
AT+NAME=?<CR+LF>   |Query the name of the BLE device
AT+NAME=NAME<CR+LF> |Set the name of the BLE device. Eg:AT+NAME=DFLEduino2
|
AT+SETTING=?<CR+LF> |Query setup status
AT+SETTING=DEFAULT<CR+LF> |Restore the initial settings
AT+SETTING=DEFFERIPHERAL<CR+LF> |Restore to the initial setting of the node mode
|
 Autoscroll
Both NL & CR 115200 baud Clear output
```

Fig1: Enter AT+HELP=? to get AT Command List

Bluetooth Connection

Before using BLE4.1 series devices, it is better to know some key buttons first.

- **BOOT:** Update Bluetooth firmware/Enable the approach connection (<10cm).
Firmware update**: Press and hold the "BOOT" button until you plug USB cable, entering firmware update mode. For any enquiry, please refers to the part: Firmware Update. (You can release your hand after you plugged the USB cable.)
Approach connection**: Press and hold the **host** BOOT button, approach the slave Bluetooth device to connect.
- **WAKEUP:** the button can wake up the device from low-power consum[ption mode (you can also connect this pin to MCU to realize the same function)
- **RST:** BLE4.1 reset button

Below is the BLE4.1 minimum system circuit diagram for your reference: Fig1: the BLE4.1 minimum system circuit diagram

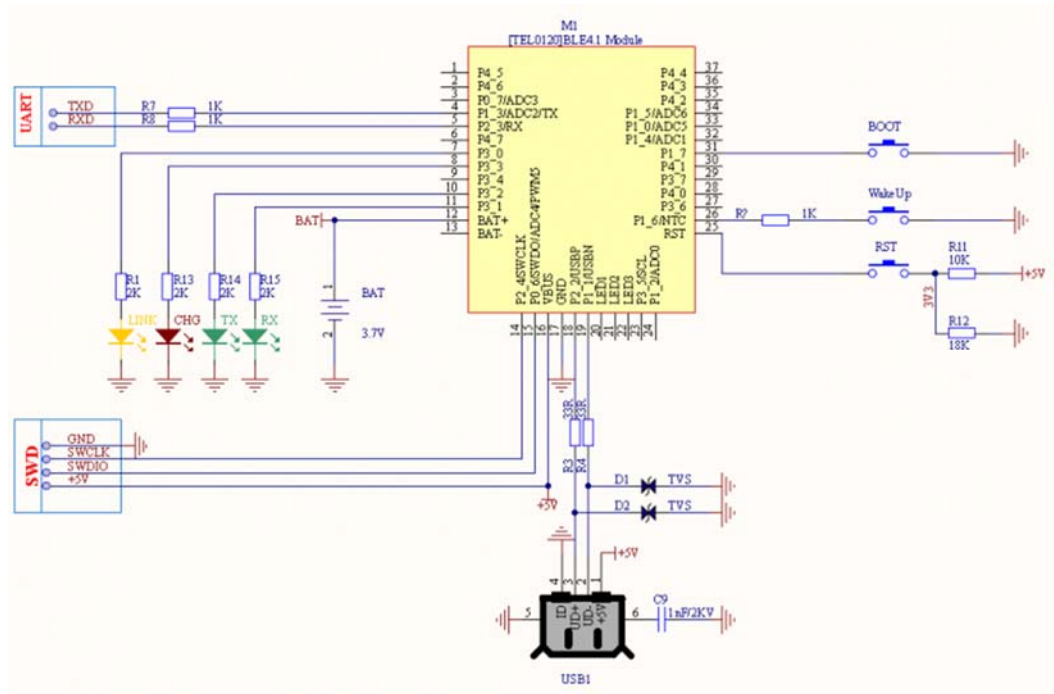


Fig1: BLE4.1 Minimum System Schematic

Smartphone Bluetooth Connection

- Android Terminal and IOS Terminal
- BlunoBasicDemo Android, Android source code (DFRobot)
- LightBlue IOS
- Blynk IOS

Different from the traditional Bluetooth (such as Bluetooth headset), BLE4.1 need specified eigenvalue and device service ID to connect smartphone. The direct connection between BLE and smartphone device manager will lead to communication problems. Therefore, it needs a the third party APP, such as **BunoBasicDemo** (published by DFRobot), **BLE Device Monitor** from TI .etc. In this section, we'll take BunoBasicDemo published by DFRobot as an example.

- Set BLE4.1 as peripheral device with command **AT+ROLE=ROLE_PERIPHERAL**. Set connection mode as **P2P** by **AT+NETWORK=P2P** command and restart BLE4.1 (power off and restart).
- Open **BunoBasicDemo** app, click **SCAN**, then we'll see the scanned BLE4.1 device .

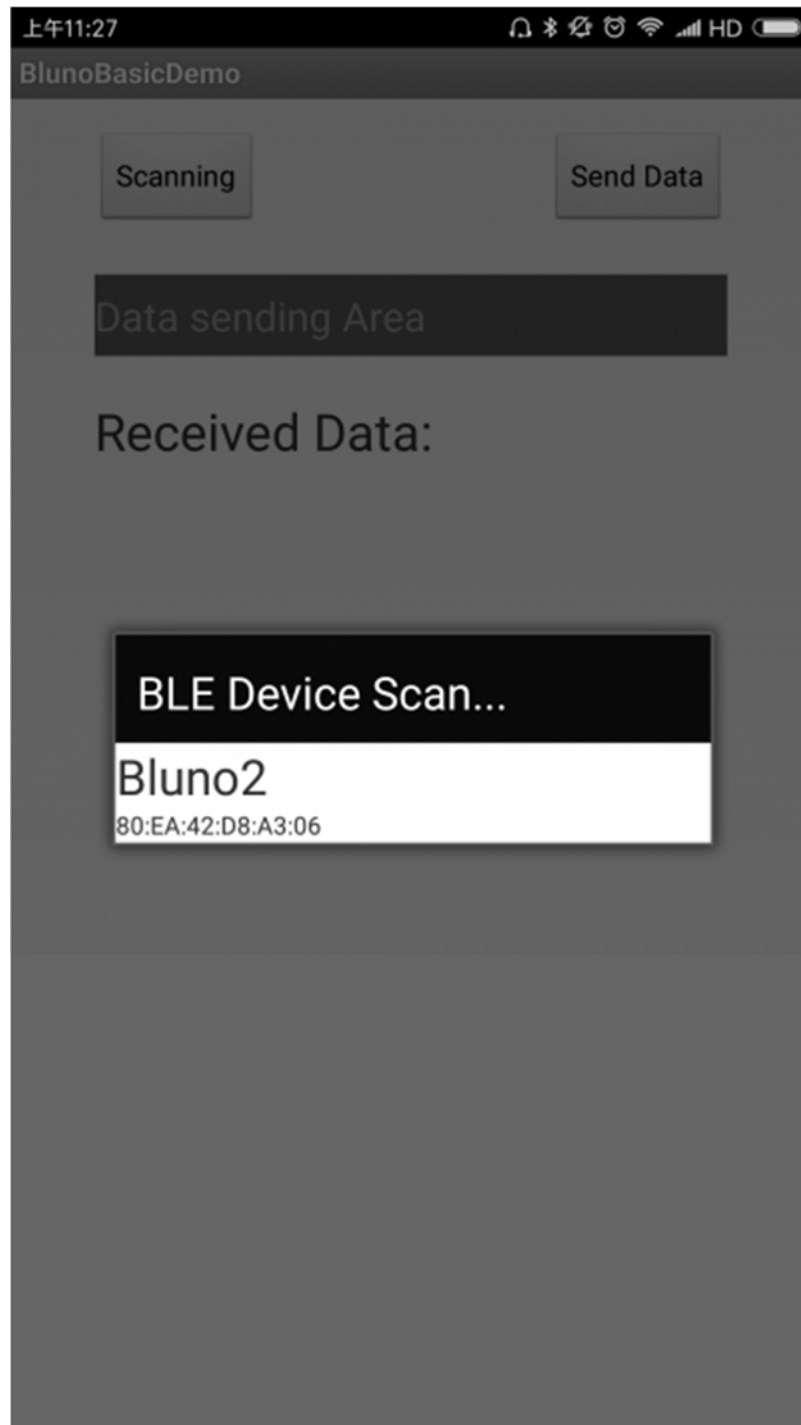


Fig1: Scanning

- Click the device to connect. Once it connected successfully, it will show Connected and LINK will light for 3s and blink for every 3s.

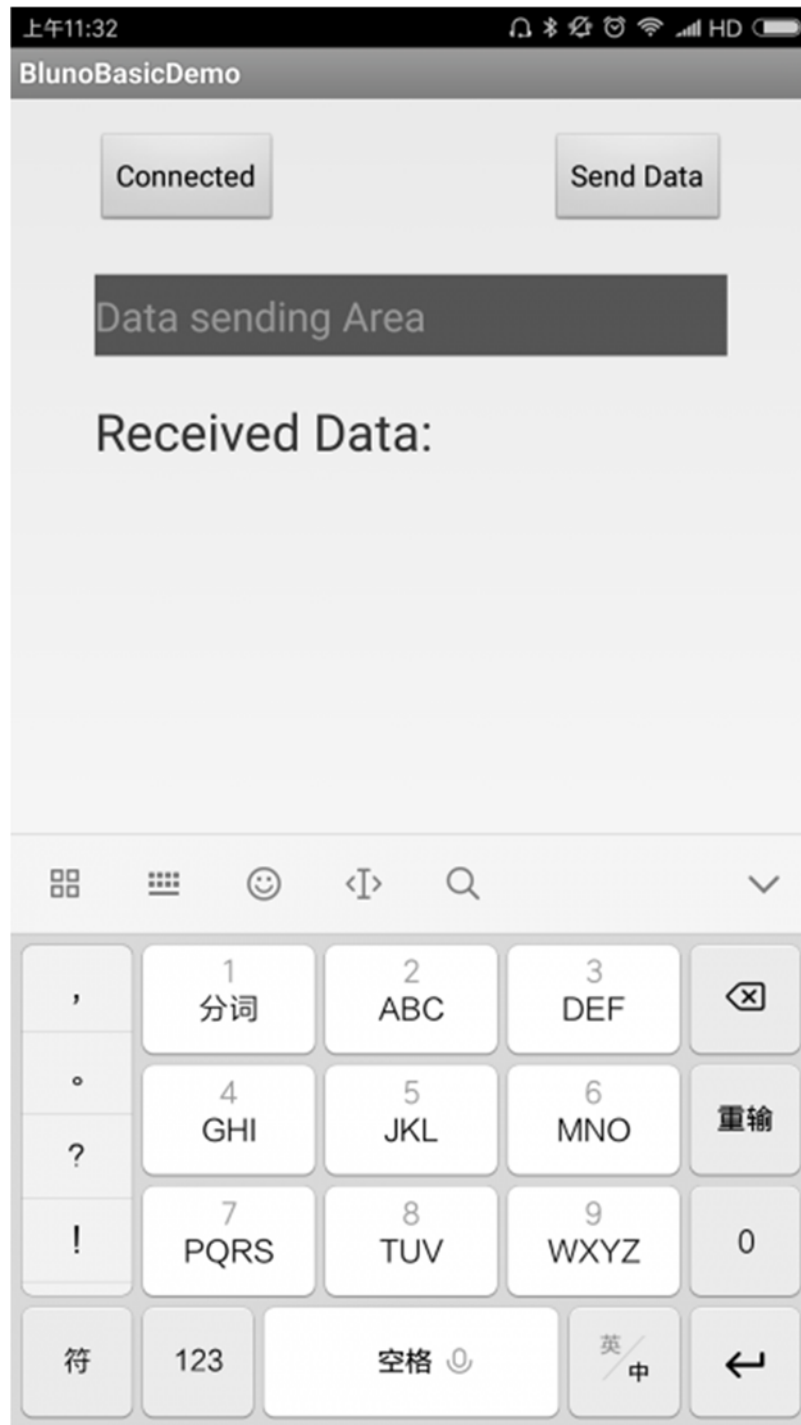


Fig2: Connected

- Send data from the **Data sending Area**

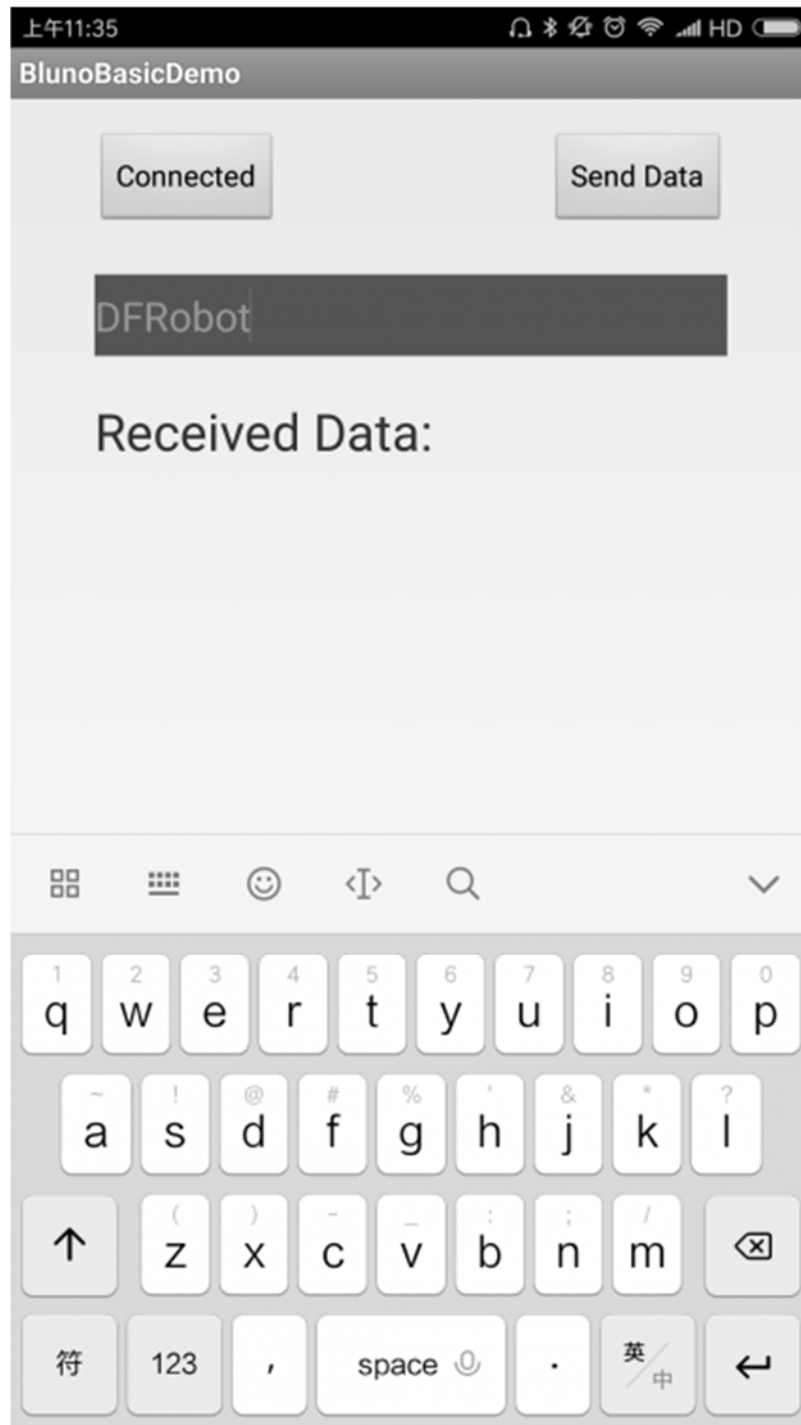


Fig3: Send Data

- Click **Send Data** to send data.

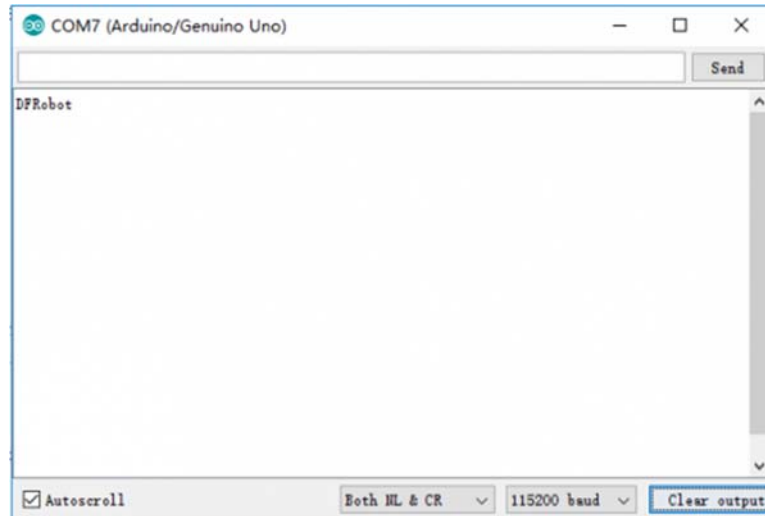


Fig4: Print what it received

PC Bluetooth Connection

The direct connection between PC and BLE4.1 built-in Bluetooth is not available for temporarily (similar to smartphone, PC also need another software to realize the connection. The development is still in planning)

Bluetooth P2P Communication

The procedure of BLE4.1 P2P connection is similar to BLE4.0, and the only difference is the P2P mode command.

There are two devices in all, one should be set as the master device(ROLE_CENTRAL) and the other one should be set as the slave device(ROLE_PERIPHERAL). Config two BLE4.1 devices as P2P connection mode with **AT+NETWORK=P2P** (Default: P2P mode).

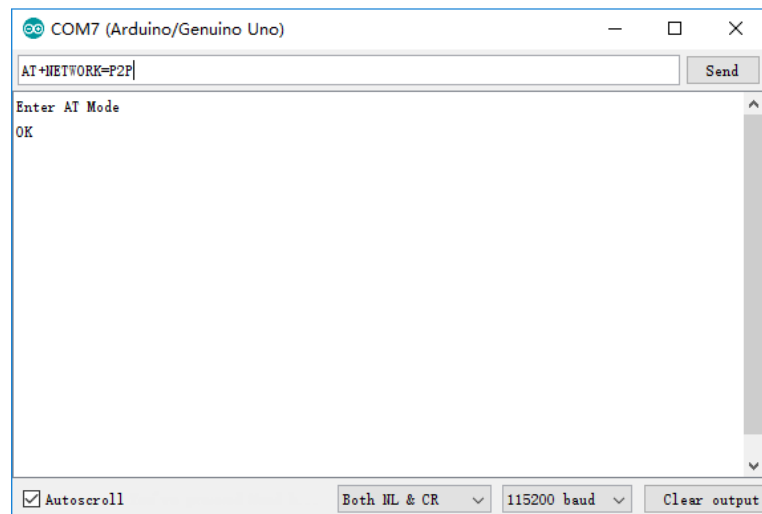


Fig1: set the connection mode

- AT Command: **AT+ROLE=ROLE_CENTRAL**, **AT+ROLE=ROLE_PERIPHERAL**,

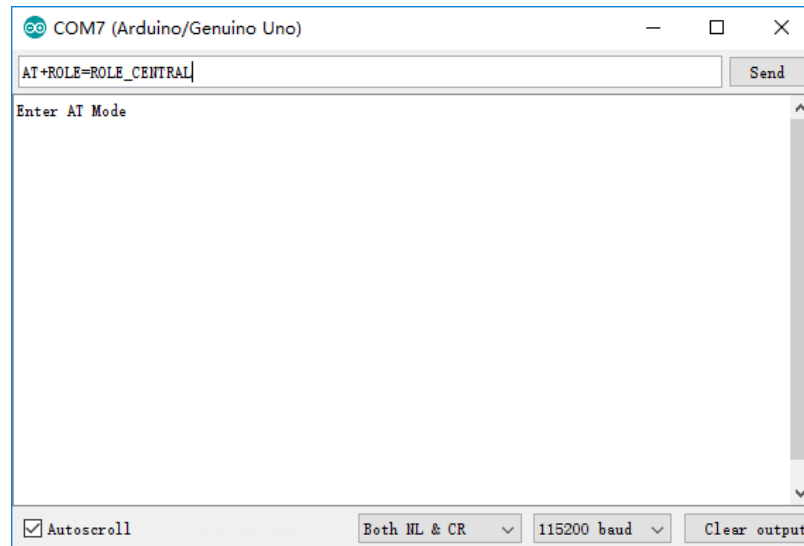


Fig2: set the device as central mode

Restart BLE4.1 device and begin the approach connection.

- **Approach Connection:** press and hold host **BOOT** button and move it close to the target slave device (<10cm) until a successful connection, then the LINK will light on each 3 seconds

NOTE:

1. The first time you press and hold the host BOOT button is only for add the new devices to the white list. It doesn't need the same operation for the second connection.
2. BLE 4.1 device is also compatible with BLE4.0 devices (Bluno 1st generation). And BLE 4.0 only supports P2P connection, so it doesn't need to set the connection mode for 4.0, just BLE 4.1 only.

Bluetooth Star Network Connection

The star network connection mode is similar to the P2P connection mode, the difference between them in setting is that the star network uses the command **AT+NETWORK=STAR**. The light LINK suggests the node device has been added to the white list of the central device and then it will connect the listed device automatically.

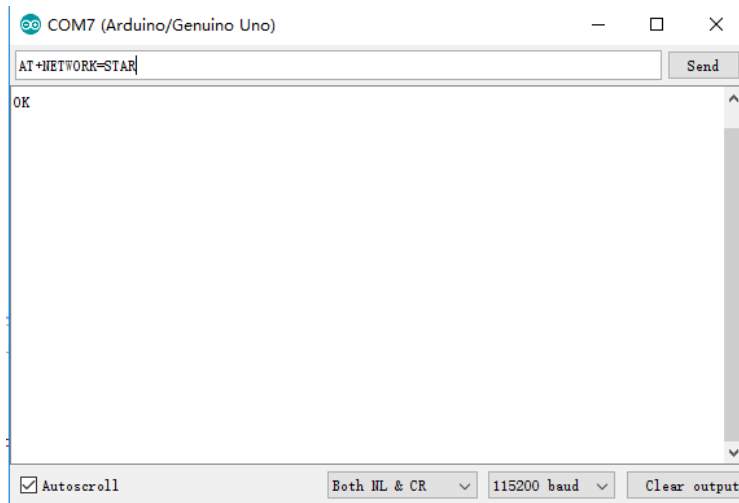


Fig1: Set Star Network Connection

 **NOTE: Star network connection is only for BLE4.1 device, not applicable to Bluno 1st generation (BLE4.0) and other BLE brands device.**

In the star connection, Bluetooth device adopt special data packet compression method. You can use Arduino library to realize network data transmit. [Click the link to download Arduino library files](#) and [Arduinojson library files](#). During the connection, the slave device which first connected to the host will get ID: 1 and hereby superimposed. The sample code shows how to get network ID of the device and ID of the data source. You'd better to power the device in turn when build star network.

```
#include <DFRobot_Bluno2.h>
#include <ArduinoJson.h>

DFRobot_Bluno2 blunoNet;
int blunoID=0;
void setup()
{
  Serial.begin(9600);

  blunoNet.begin(Serial); //获取id
}

void loop()
{
  uint8_t event=blunoNet.getEvent(); //queue
  switch(event)
```



```

{
  case EVENT_NETINFO:
  {
    eventNode e = blunoNet.popEvent();

    StaticJsonBuffer<200> jsonBuffer;
    JsonObject& root = jsonBuffer.parseObject((const char *)e.payload);
    if (!root.success()) {
      return;
    }
    int s = root["r"].size();
    for(int i = 0; i < s; i++){
      if(root["r"][i]["s"].as<int>()){
        blunoID = root["r"][i]["i"].as<int>();
        break;
      }
    }
    break;
  }
  case EVENT_DATA:
  {
    eventNode e = blunoNet.popEvent();
    blunoNet.sendPacket(e.src, blunoID, "hello12345678901234567890",26);
    break;
  }
  default: //no event
  {
    break;
  }
}
blunoNet.loop();
if(Serial.available()){
  char message=Serial.read();

```

```
blunoNet.sendPacket(!blunoID, blunoID, &message,1);  
}  
}
```

Bluetooth Low Power Consumption Mode

After Bluetooth enter low power consumption mode, the BLE 4.1 consumes lower than 10uA, and it can still broadcast and keep data interaction. With command **AT+LOWPOWER=ON**, BLE4.1 device will enable low power consumption mode after you reboot the device. BLE4.1 device will enter this mode in 10s. You can also use **AT+BOOT** to make a software reboot.

Here is something you should notice: The MCU should **WAKEUP** the BLE Chip first, or it will be messy code.

In the low power consumption mode, if there is no extra operation, Bluetooth will enter this mode after 10s. You can awake Bluetooth by interruption pins; awake ATmega328P by Bluetooth:

- BLE4.1 wakes up the Arduino controller (ATmega328P) with P4_2 (D2_Arduino): high voltage wakeup
- Arduino controller (ATmega328P) wakes up BLE4.1 by WAKEUP (D3_Arduino): low voltage wakeup

Wireless Programming

Bluno 2 wireless programming is completely compatible with Bluno1 (BLE4.0). And it is only available under P2P connection mode: the host (the central device) to the slave side.

- Similar to P2P connection, set one as host and plug to the PC; set the other one as slave. Pairing the host and the slave, download is available.

Firmware Upgrade

DFRobot BLE4.1 has the firmware method to BLE 4.0, click to download [BLE4.1 firmware update tool](#), BLE4.1 firmware address [Firmware Download](#).

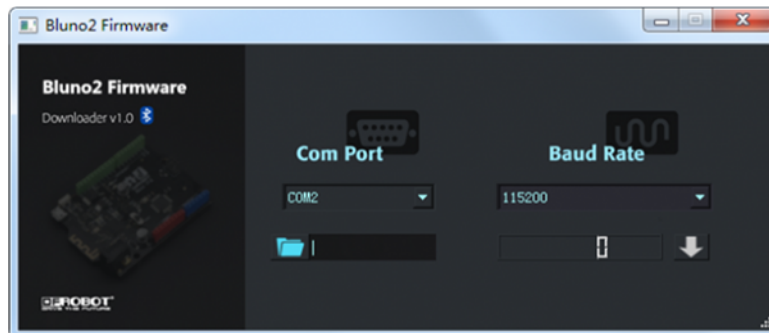


Fig1: Bluno2 Firmware Update Tool

Update steps are as below:

- Hold BOOT
- Connect BLE4.1 to PC and loose BOOT, CHG and LINK flashes alternatively.
- Open Bluno2 Firmware and select corresponding serial number.
- Choose firmware to update, the firmware format is .img
- Click to download