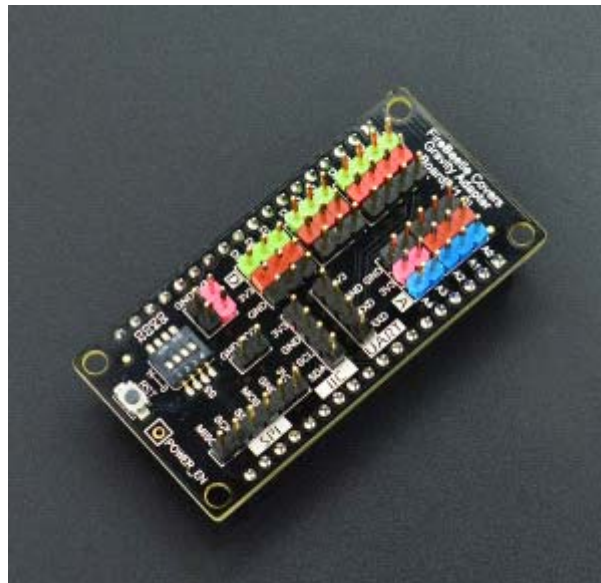




FireBeetle Covers-Gravity I/O Expansion Shield

SKU: DFR0483



Introduction

DFRobot FireBeetle series is the low-power consumption micro-controller intentionally designed for Internet of Things (IoT). The series micro-controllers aims at IoT node of low-power consumption, attending to build the IoT hardware platform quickly and conveniently. There are three types of FireBeetle, containing Boards (main control), Covers (expansion boards) and related Accessories. FireBeetle Covers-Gravity I/O Expansion Shield is an adapter for Gravity sensors and modules. With this shield, you can achieve convenient connection between Gravity sensors and FireBeetles. Every sensor will have its independent power pins.



Note: Please pay attention that the working voltage is 3.3V only. (Red pins)

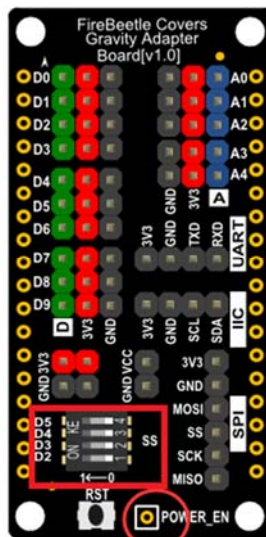
Features

- DFRobot FireBeetle Compatible
- Gravity interface, plug and play, easy to use
- Cost-effective
- Small size, convenient to install

Specification

- Input voltage : 3.7V~5.5V (VCC)
- Output voltage : 3.3V
- Supports low-power consumption Mode: POWER_EN = LOW
- Support maximum discharge current: 600mA(Output voltage: LDO-3.3V)
- Interface: Gravity standard interface.
- Digital I/O Pins: 10
- Analog Input Pins: 5
- Supports I2C x1
- Supports UART x1
- Supports SPI x1
- Dimension: 29.00x58.00mm

Board Overview



FireBeetle Covers-Gravity I/O Expansion Shield

	Label	Description
1	POWER_EN	Low-power Consumption Enable Pin (Default: HIGH), POWER_EN = LOW, 3V3 Pins (Red) = 0V; POWER_EN = HIGH, 3V3 Pins (Red) = 3.3V;
2	SS	SPI SS (CS) Pin: D2, D3, D4, D5

Dimension

