



## Bluno M3 SKU:DFR0329

---



Bluno M3

### Contents

- [1 Overview](#)
- [2 Specification](#)
- [3 Board Overview](#)
- [4 Bluno M3 Features](#)
  - [4.1 Differences between Bluno M3 and Arduino](#)
- [5 QuickStart](#)
  - [5.1 Setup Software Development Environment](#)
  - [5.2 Install Bluno M3 Driver](#)
  - [5.3 Blink an LED](#)
  - [5.4 Wireless Programming](#)

### Overview

The ARM processor is famous for its efficient processing performance, but one of the downsides to this is that its developing environment is also quite complicated. Bluno M3, a new product designed by DFRobot, changes this. The rewritten underlying protocol and development environment have been rewritten to accommodate for Arduino language usage, giving it full Arduino compatibility. Bluno M3 has 512K flash memory and 64K SRAM, and the integrated Bluetooth 4.0 (BLE) supports Bluetooth wireless control or Bluetooth wireless programming. This board is suitable for robotic control or IOT applications and has a good balance between Arduino and ARM processing.

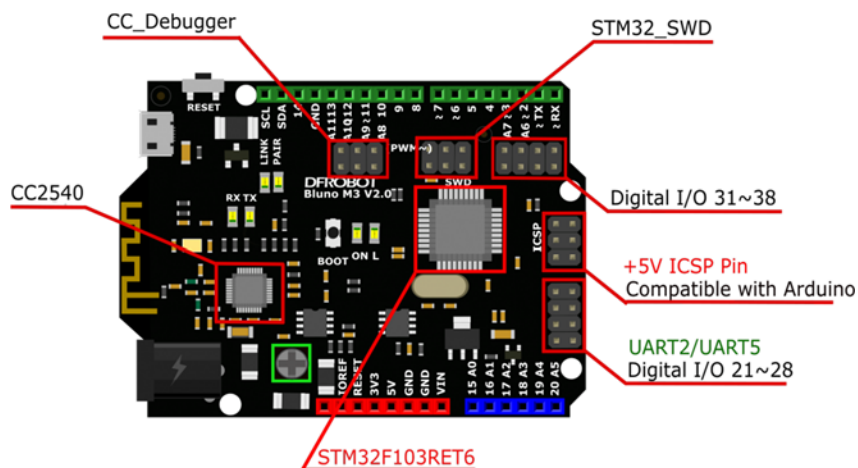
## Specification

- Microcontroller: STM32 F103RET6
- Clock Speed: 72MHz
- Bluetooth chip: TI CC2540 (Bluetooth 4.0)
- Communication Range: 30m
- Operating Voltage: 3.3V
- DC Supply: USB Powered or External 7V~12V DC
- Digital I/O Pins: 39
- Analog Input Pins: 11 (Multiplexing Pins)
- External Interrupt: 39 (D0~D38)
- I2C/IWC: 30 (Default SDA), 29 (Default SCL)
- SRAM: 64K
- Flash: 512K (Customizable Flash assignment, refer to Flash chapter)  
Default User Code repository: 492K  
Default User Data repository: 20K
- SPI: SPI,SPI1  
SPI 12(MISO), 11(MOSI), 13(SCK)  
SPI1 33(MISO), 34(MOSI), 32(SCK)
- Serial Port: 5 (Serial1/Serial2/Serial3/Serial4/Serial5)  
Serial1 0 (Rx1) & 1(Tx1)  
Serial2 22(Rx2) & 21(Tx2)  
Serial3 30(Rx3) & 29(Tx3)  
Serial4 8(Rx4) & 9(Tx4)  
Serial5 54(Rx5) & 53(Tx5)
- Dimensions: 68mm x 31mm



The STM32 is a 3.3V processor. Do NOT use any 5V sensor/module with it in case of burning it!

## Board Overview



- M3 Hardware UART1 connects to RX1/TX1 and Bluetooth communications port
- SCL/SDA is a default internal IIC interface, compatible with Arduino IIC use-pattern
- "~": PWM: pins with this mark can output a PWM signal (refer to PWM chapter for more information)
- "Ax": Analog input pins (note: some analog pins and digital pins are using the same GPIO)
- "SWD": STM32 debug port
- For pin definitions and functions refer to the **MORE** section: [Bluno M3 Reference manual — GPIO](#)

[https://www.dfrobot.com/wiki/index.php/Bluno\\_M3\\_Reference\\_Manual#GPIO](https://www.dfrobot.com/wiki/index.php/Bluno_M3_Reference_Manual#GPIO)

## Bluno M3 Features

### Differences between Bluno M3 and Arduino

#### 1. Overview

The Bluno M3 is different to previous Bluno boards as it is based on a 32bit ARM Cortex-M3 core architecture. A regular Arduino is based on an 8bit AVR core. Due to these differences, machine commands are also different. Arduino IDE uses avr-gcc, whilst Bluno M3 uses arm-none-eabi-gcc.

#### 2. Hardware Ports

- ADC: Pins marked with "Ax" (e.g. A0, A6, A10) can be used as Analog input ports
- Uart: 5 Serial Ports in all (Serial1/Serial2/Serial3/Serial4/Serial5). Bluetooth and RX1/TX1 use Serial1
- SWD: STM32 debug port, you can use debug hardware based on STM32 on these pins
- GPIO: All pins can be used as digital I/O, including analog pins

#### 3. Language and Library Software Differences

- ADC: Bluno M3 provides two kinds of ADC mode: one is compatible with Arduino, the other is Bluno M3's unique way: adcMode() and adcRead(), which makes it more powerful. Refer to Bluno M3 [Bluno M3 Reference manual — ADC](#) ADC Application.
- PWM: Bluno M3 provides two kinds of PWM mode, one is compatible with Arduino, the other is Bluno M3's unique way: pwmMode() and pwmWrite(), which makes it more powerful. Please refer to Bluno M3 [Bluno M3 Reference manual — PWM](#) PWM Application.
- UART: There are 5 UARTs on the board. UART1 is corresponds to the Board RX1 and TX1, and it is also connected with the Bluetooth communicating port.

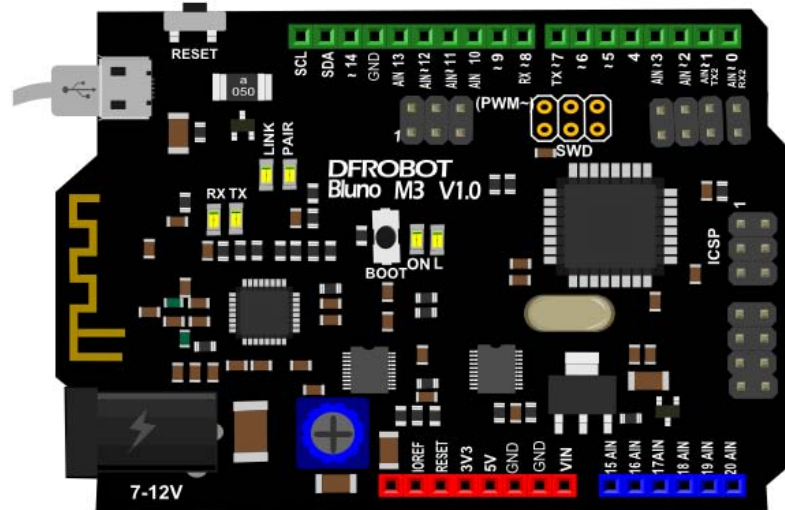
#### 4. Bluno M3 Reference

This section introduces basic information, methods of application, function interfaces and uses. e.g. GPIO, PWM, UART, SPI, I2C, etc. For the further information, please check [Bluno M3 Reference Manual](#)

[https://www.dfrobot.com/wiki/index.php/Bluno\\_M3\\_Reference\\_Manual](https://www.dfrobot.com/wiki/index.php/Bluno_M3_Reference_Manual)

## QuickStart

In this section, we will guide you how to use Bluno M3 step by step.



## Setup Software Development Environment

### 1. Download IDE and Bluno M3 Driver

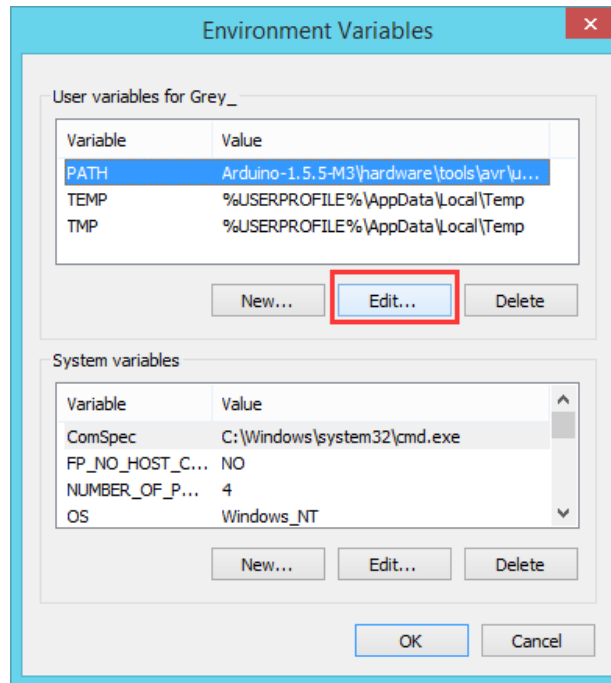
Download Bluno M3 Arduino IDE — [Arduino IDE 1.5.5 \(M3 Version\) from OneDrive](#)

<https://onedrive.live.com/redir?resid=7B63697962CC93EA!133&authkey=!AEO3Nnxvjvxcmtk&ithint=folder%2cpdf>

This is a custom version based on Arduino IDE 1.5.5 where we have redefined the interface functions. Please note that because of this, other versions are not compatible with Bluno M3.

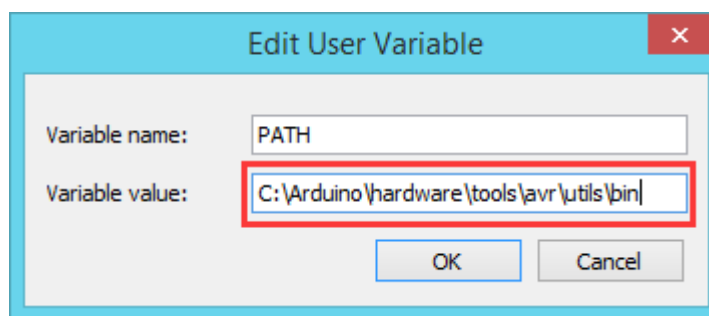
### 2. Install Software

- Download Arduino IDE (Bluno M3 version) and extract the files to your computer.
- Configure **Environment Variables**
  1. Open Control Panel > System and Security > System > Advanced System Settings > Environment Variables
  2. Select **PATH**, and click **Edit...** button



3. Copy the Arduino IDE 1.5.5 (Bluno M3 Version) directory path you downloaded before in to PATH. For example: **C:\Arduino\hardware\tools\avr\utils\bin**. Click **OK**.

Note: If there are a lot of directories in **PATH**, you can use ";"(semicolon) to split them.

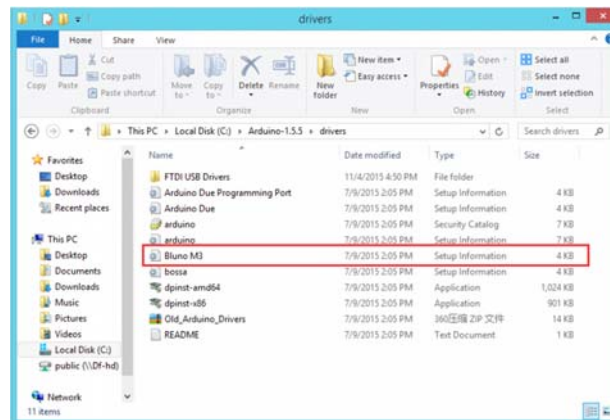


## Install Bluno M3 Driver

1. Connect Bluno M3 to your PC's USB port, open **Hardware Devices** and select the **Driver** folder.

Note: The **Driver** folder is located in your Arduino IDE 1.5.5 (Bluno M3 version) hardware drivers folder.

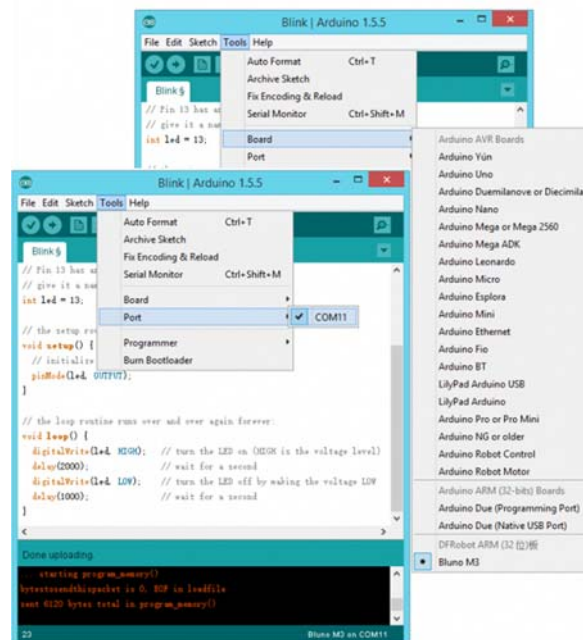
e.g. **C:\Arduino\hardware\drivers**



## Blink an LED

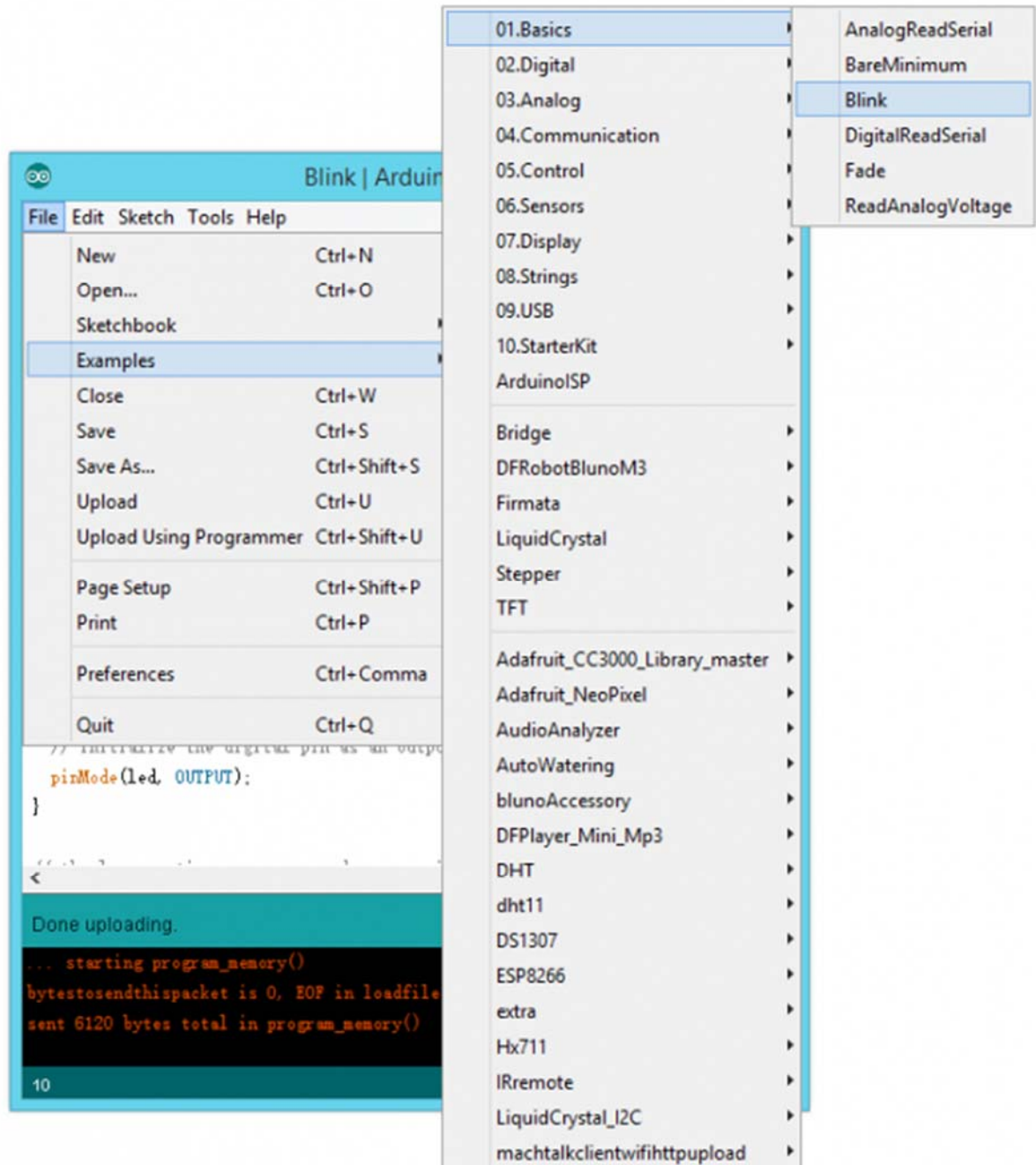
1) Open Arduino IDE 1.5.5 (Bluno M3 Version)

2) Select "Bluno M3" and COM port



3) Click "Files" > "Examples" > "0.1 Basic" > "Blink" to open the sample code "Blink".

4) Click "Upload" to upload the sketch to the device.



You should see the on-board LED flashing on and off every second.

## Wireless Programming

Bluno M3 is a derivative of the Bluno microcontroller, as a result it inherits wireless programming and wireless communication functions. You can refer to the Bluno wiki page for Bluetooth configuration and the AT commend set.

Bluno Wiki Page

Some recommendations:

Port	Bluno M3
PC<—>Bluno M3	USB BLE Link <—>Bluno M3
Bluno<—>Bluno M3	Direct-connect <—>Bluno M3
Arduino<—>Bluno M3	BLE Link <—>Bluno M3

**Just configure one PERIPHERAL, the another CENTRAL. They will automatically connect.**

For any question/advice/cool idea to share, please visit [DFRobot Forum](#).