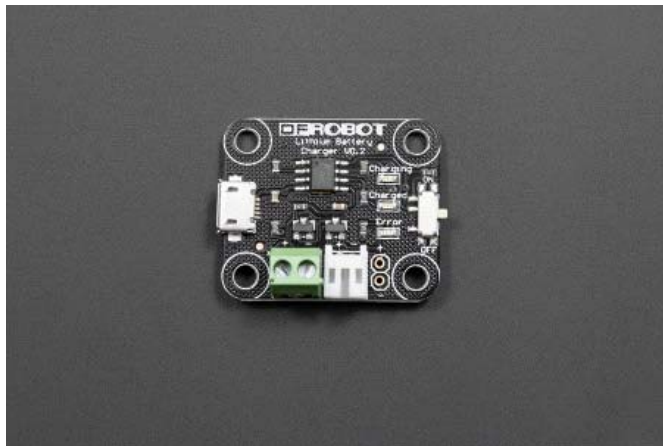




Lithium Battery Charger

SKU: DFR0208



INTRODUCTION

If you need to charge LiPo batteries, this simple charger will do just that, and do it fast! The Lithium Battery Charger can charge 3.7V LiPo battery at a rate of 500mA per hour. It is designed to charge single-cell Li-Ion or Li-Polymer batteries. Check the datasheet below to see if it will work with your battery.

The board incorporates a charging circuit, status LED, connector for your battery (JST-type used in the batteries we carry), and a micro-USB connector. Four small mounting holes allows this charger to be easily embedded into a project.

SPECIFICATION

- Programmable Charge Current:Up to 1000mA
- Constant-Current/Constant-Voltage
- Types of battery:Single-cell Li-Ion or Li-Polymer batteries
- Interface
 - Charge from Micro USB
 - JST-type or terminal connect to battey
- With ON/OFF switch,3 status LEDs
- Accuracy:1.5% @ Preset 4.2V Charge Voltage

- C/10 Charge Termination
- Operating Ambient Temperature : -40°C~85°C
- Size:3.2x2.7x1cm(1.26"x1.06"x0.39")

SHIPPING LIST

- Lithium Battery Charge x1