



Analog Voltage Divider SKU: DFR0051



Analog Voltage Divider V2

Contents

- [1 Introduction](#)
- [2 Specification](#)
- [3 Connection Diagram](#)
- [4 Sample Code](#)

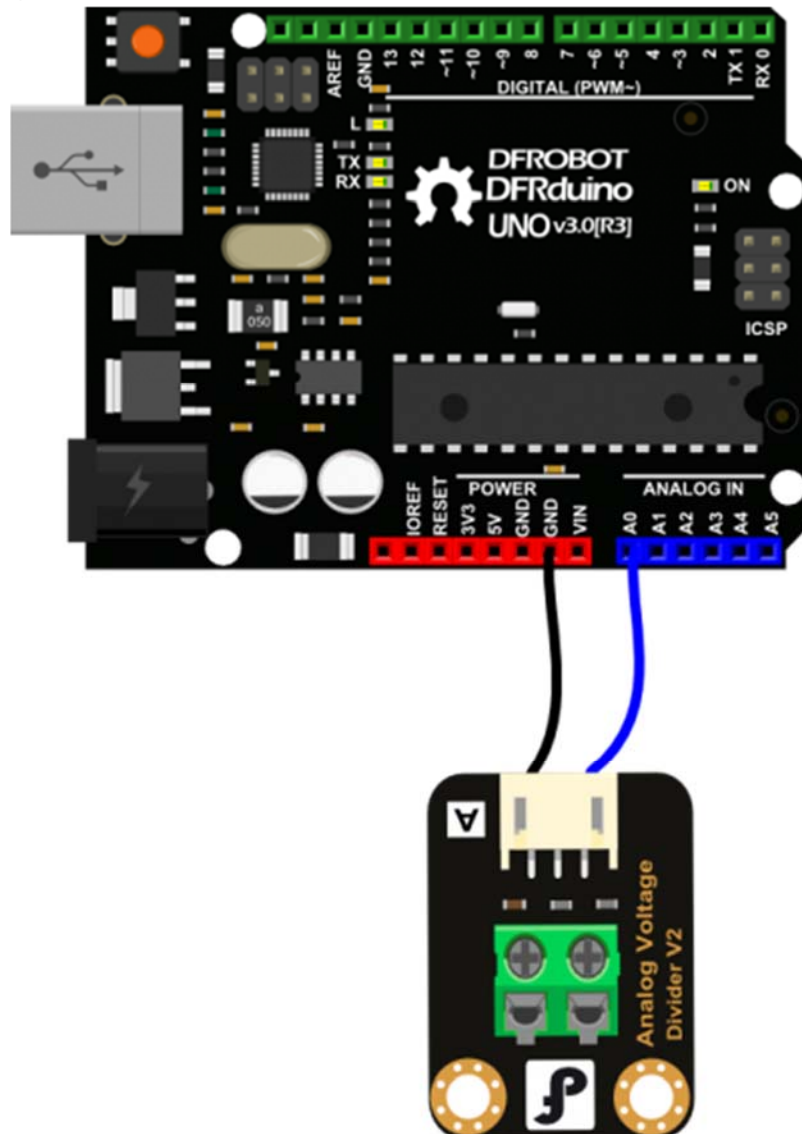
Introduction

Analog Voltage Divider (SKU: DFR0051) The Voltage Divider can detect the supply voltage up to 25V. The DFRobot Voltage Divider module is based on resistor divider principle. The voltage detection module allows the input voltage to reduce 5 times. As the Arduino analog input voltage is up to 5V, so voltage detection module's input voltage can not be greater than the $5V \times 5 = 25V$.

Specification

- Interface: Analog
- Input voltage (DC): Maximum 25V, Minimum 0.0245V
- Detects the supply voltage upto 25V
- Size: 22x30mm

Connection Diagram



Analog Voltage Divider diagram

Sample Code

```
void setup()  
{  
  Serial.begin(9600);  
}  
void loop()  
{
```

```
int val;
float temp;
val=analogRead(0);//This divider module will divide the measured voltage by 5, the maximum voltage it can measure is 25V.
temp=val/40.92; //
val=(int)temp;//
Serial.println(val);
delay(100);
}
```