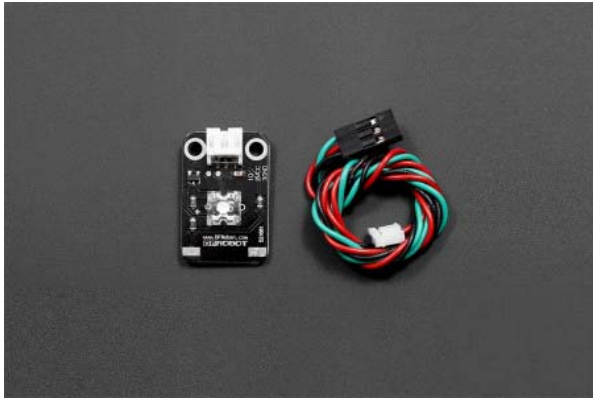




# Gravity:Digital piranha LED module-Blue

SKU: DFR0031-B



## INTRODUCTION

Piranha LED light module (Blue) , and special sensors Arduino board and ambient light sensor extension combination, can be used in the interaction with the light works.

When the LED light module connected to Arduino, the digital pin (LOW on, HIGH off) is used to control it. The brightness of LED can be controller via PWM output.

## SPECIFICATION

- Voltage: +3.3-5V
- Pin Definition :1 - control 2 -GND 3 --- Power
- Weight: 5g
- Color:Blue

## SHIPPING LIST

- LED light module-Blue x1
- [Digital Cable](#)(SKU:FIT0011) x1