

# PIC16F887 Development Kit

Sku: 53301-805



## Development Kit Options

Tools Included	w/Compiler	Just H/W	Only PCB
Compiler Software	●		
Programmer	●	●	
Prototyping board	●	●	●
Power supply & cables	●	●	
Prototyping Parts Box	●	●	
Exercise book	●	●	
Price			
<b>Buy Now</b> →	<b>Add</b>	<b>Add</b>	<b>Add</b>

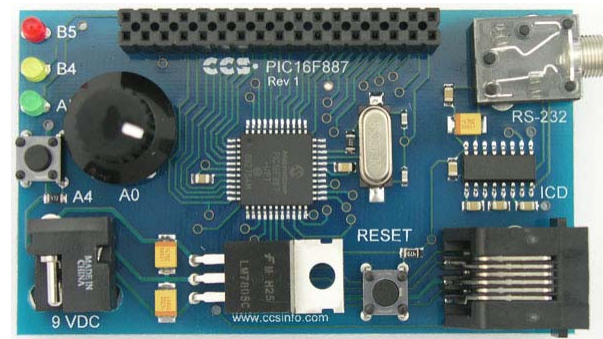
This development kit contains everything you need to begin development with Microchip's PIC<sup>®</sup> PIC16 family. Along with a prototyping board, it includes the powerful PCW Integrated Development Environment with compiler support for Microchip's PIC<sup>®</sup> PIC10, PIC12 and PIC16 families and an ICD-U64 in-circuit programmer/debugger that supports C-aware real time debugging. The prototyping board features a PIC16F887 attached to a potentiometer, RS-232 level converter, pushbutton, three LEDs, and an ICD connector.

## PIC16F887 Prototyping Board (Size: 3" x 1.75") includes:

- PIC16F887
- 30 I/O Pins (12 Can Be Analog)
- One Potentiometer
- One Pushbutton
- Three LEDs
- RS-232 Level Converter
- ICD Jack

## PIC16F887 Development Kit includes:

- PIC16F887 Prototyping Board
- In-Circuit Debugger/Programmer
- Breadboard
- Parts box with:
  - 93LC56 serial EEPROM chip
  - Jumpers
  - DS1631 digital thermometer chip
  - NJU6355 real-time clock IC with attached 32.768kHz crystal
  - Two digit 7-segment LED module



- Two 1K Ohm resistors
- Exercise Tutorial
- 9V AC Adapter and Cables