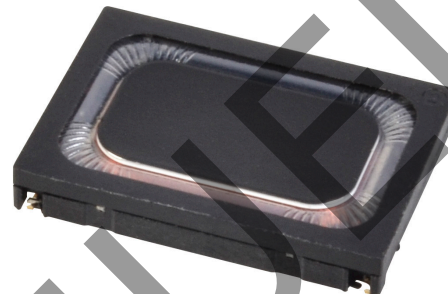


MODEL: CDS-18138A | **DESCRIPTION:** SPEAKER**FEATURES**

- micro-speaker
- 8 ohm impedance
- spring leads

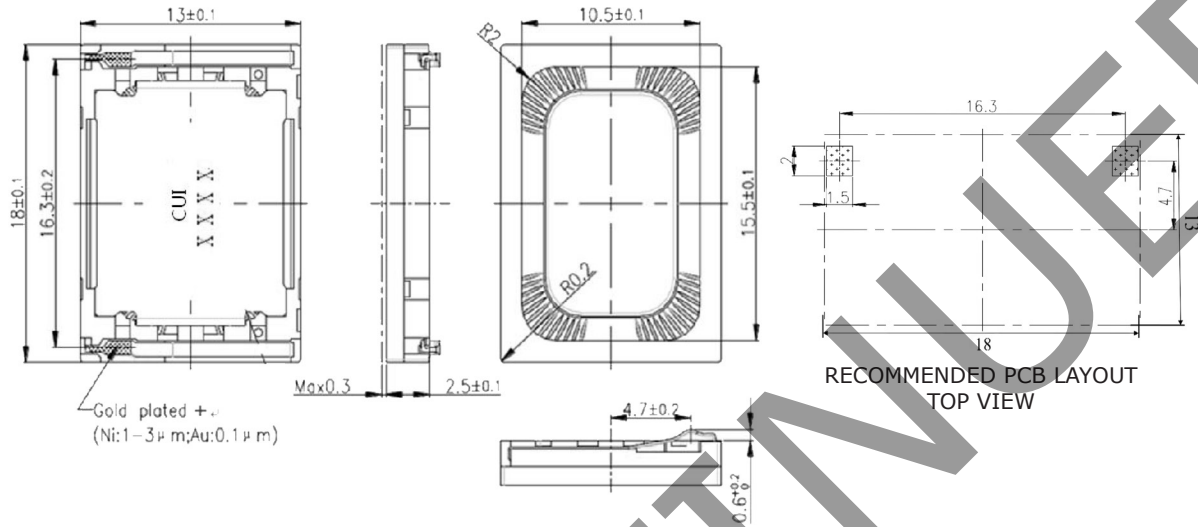
**SPECIFICATIONS**

| parameter | conditions/description | min | typ | max | units |
|-------------------------|--|------------|------------|------------|--------------|
| input power | maximum power: IEC-60268-5, filter 60s on/120s off, 10 cycles at room temp | | 0.7 | 1.0 | W |
| impedance | at 1.5 kHz, 1.0 V | 7.2 | 8 | 8.8 | Ω |
| resonant frequency (Fo) | in 1 cc closed box | 300 702 | 375 780 | 450 858 | Hz Hz |
| frequency response | average SPL -10 dB | Fo | | 20,000 | Hz |
| sound pressure level | at 0.7 W, 0.1 m ave, at 2.0, 3.0, 4.0 kHz | 86 | 89 | 92 | dB |
| distortion | at 1.0 kHz, 0.7 W, in 1 cc closed box | | | 10 | % |
| buzz, rattle, etc. | must be normal at sine wave between 400 ~ 5 kHz, in 1 cc closed box | | 2.37 | | V |
| polarity | cone will move forward with positive dc current to "+" terminal | | | | |
| dimensions | 18.0 x 13.0 x 2.5 | | | | mm |
| magnet | Nd-Fe-B | | | | |
| material | PPA | | | | |
| cone material | mylar | | | | |
| terminal | spring type | | | | |
| weight | | | 1.6 | | g |
| operating temperature | | -20 | | 70 | $^{\circ}$ C |
| storage temperature | | -40 | | 85 | $^{\circ}$ C |
| RoHS | 2011/65/EU | | | | |

Notes: 1. All specifications measured at 5~35 $^{\circ}$ C, humidity at 45~85%, under 86~106kPa pressure, unless otherwise noted.

MECHANICAL DRAWING

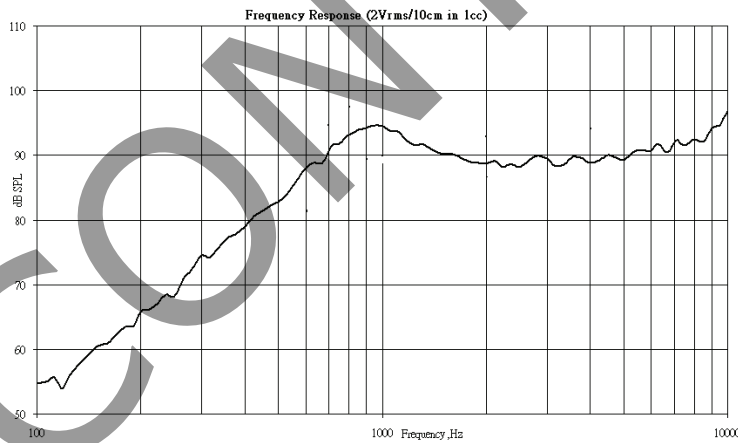
units: mm
tolerance: ± 0.2 mm



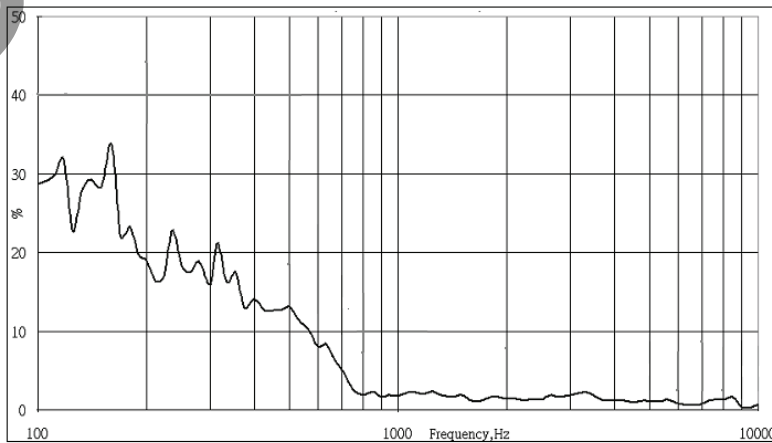
- Notes:
1. Working height of the spring contacts is <math>< 0.4</math> mm.
 2. The cone extends beyond the housing by a maximum of 0.3 mm during operation.

RESPONSE CURVES

Frequency Response Curve



Total Harmonic Distortion Curve



REVISION HISTORY

| rev. | description | date |
|------|-----------------|------------|
| 1.0 | initial release | 03/25/2015 |

The revision history provided is for informational purposes only and is believed to be accurate.



Headquarters
20050 SW 112th Ave.
Tualatin, OR 97062
800.275.4899

Fax 503.612.2383
cui.com
techsupport@cui.com

CUI offers a one (1) year limited warranty. Complete warranty information is listed on our website.

CUI reserves the right to make changes to the product at any time without notice. Information provided by CUI is believed to be accurate and reliable. However, no responsibility is assumed by CUI for its use, nor for any infringements of patents or other rights of third parties which may result from its use.

CUI products are not authorized or warranted for use as critical components in equipment that requires an extremely high level of reliability. A critical component is any component of a life support device or system whose failure to perform can be reasonably expected to cause the failure of the life support device or system, or to affect its safety or effectiveness.