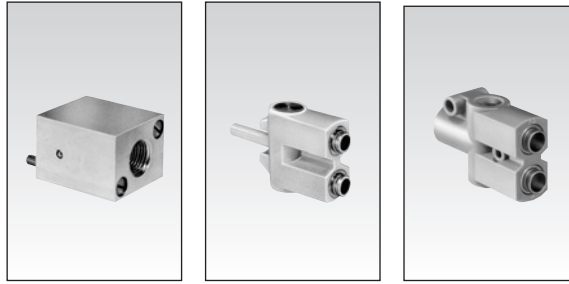


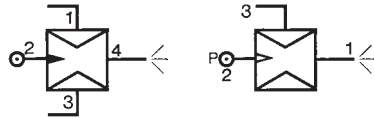
# Vacuum handling components



## Part numbers

Vacuum generators	<b>81 535 301</b> Sub-base mounting	<b>81 545 001</b> Plug-in	<b>81 545 004</b> Plug-in
-------------------	--	------------------------------	------------------------------

**1**

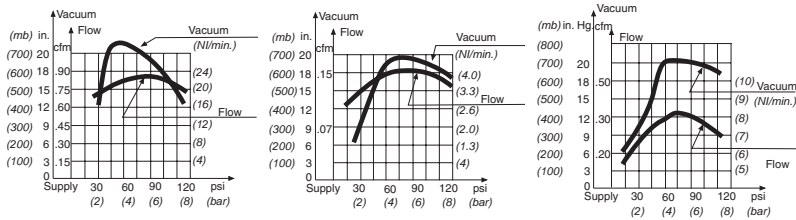
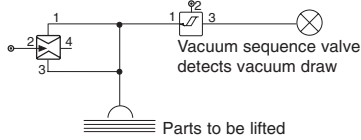


## Characteristics

Push-in connectors for semi-rigid tubing (NFE 49100)	Male/Female/Female (MFF) Female/Female/ Female (FFF)	—	Ø 5/32" (4mm)	—
Operating pressure	psi (bars)	30 > 120 (2 > 8)	30 > 120 (2 > 8)	30 > 120 (2 > 8)
Vacuum pad material		—	—	(6mm)
Weight	grams	80	13	25

Detection of the pressure decrease can be achieved by the use of manostats (see page 3/5)

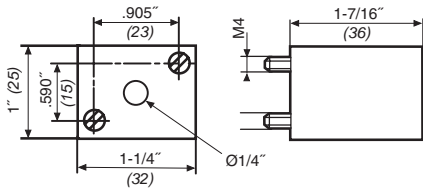
### Typical Application



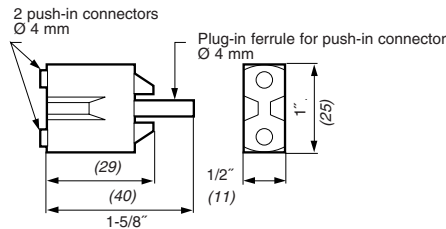
## Dimensions

### 81 535 301

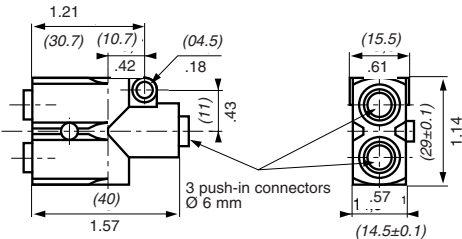
Sub-base mounting 81 531... and 81 532...



### 81 545 001



### 81 545 005



use (metric) dimensions for critical data.

Other information	To order, specify :				
Sub-base for mounting see page 4/14 - 4/15	<table border="1"> <tr> <td>Standard products</td> <td><b>1</b> Part number</td> </tr> <tr> <td></td> <td>Example : Vacuum generator - 81 535 301</td> </tr> </table>	Standard products	<b>1</b> Part number		Example : Vacuum generator - 81 535 301
Standard products	<b>1</b> Part number				
	Example : Vacuum generator - 81 535 301				

Products and specifications subject to change without notice.  
Consult factory for application assistance.

204 Airline Drive, Suite 300, Coppell, Texas 75019 / Tel: (888) 778-2733 / FAX: (888) 329-9773 / www.crouzet-usa.com