

# IAR.T SERIES

## CURRENT CONTROL RELAY

UL listed CSA recognized

- **Automatic or Manual Control**
- **Start-up Inhibit**
- **Adjustable Hysteresis**
- **Multiple Voltages**
- **5 to 100 Amp RMS**



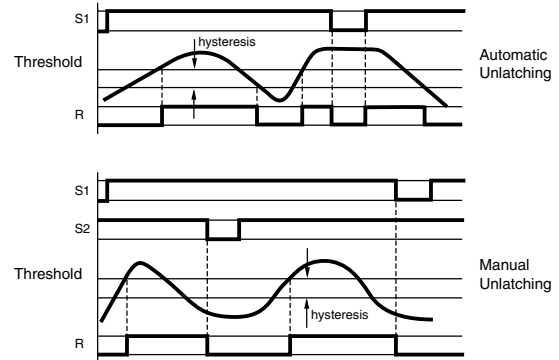
The DIAR.T is a current control which is capable of sensing up to 100 Amps. It requires a stepdown transformer, T1 100. The transformer has a 0.4" diameter center hole through which a current carrying lead is routed. Automatic or manual unlatching is available in each unit.

### 1. AC Current Control Without Latching:

The output relay is energized when the AC current overshoots the level selected on the potentiometer. It de-energizes when the current falls below the selected current by 5 to 50% or when input power breaks. The hysteresis is controlled by a top mounted potentiometer and its selection does not change the chosen current level.

### 2. AC Current Control With Latching:

The output relay is energized when the current reaches the selected value and stays latched. The contact between terminal B1 and B2 (or 11 and 9) should be opened or input power to the device interrupted to reset. In this case, it is preferable to reduce the hysteresis 5%.



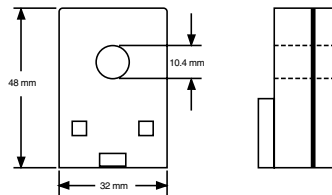
## SPECIFICATIONS:

Input	24 VDC, 24, 48, 110, 220 VAC
	±15%, 50/60 Hz
Power consumption	3 VA maximum
Hysteresis selection	5 to 50% of input current
Repeat accuracy	±2% at a constant ambient
	±5% with temperature variation
	VDE 0435
Response time	100 ms On Make
	200 ms On Break
Output Relay	SPDT Relay
Contact material	AgCdO
Maximum loading	10 AAC resistive
Maximum switching voltage	250 VAC
Relay maximum power rating	2500 VA
Mechanical life of relay	30 x 10 <sup>4</sup> operations
Electrical life of relay	2 x 10 <sup>5</sup> at 2500 VA resistive load
Operating temperature	+14°F to +140°F
	-10°C to +60°C
Weight	7 oz. (200g)

## TRANSFORMER: (Part Number 74 525 305)

Current  
Range: 5 to 100 A RMS

Maximum  
Overload: 1 max = 150 A



## ORDERING INFORMATION:

**L**  
MOUNTING

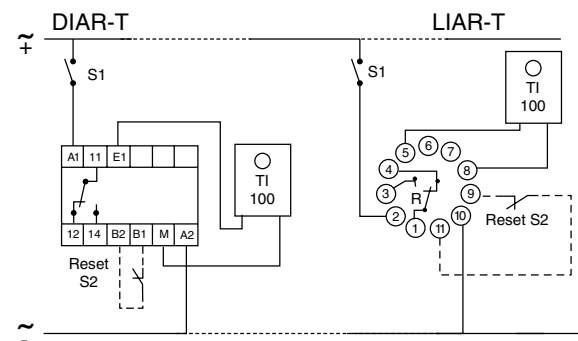
**MOUNTING**  
D = DIN-rail mounting  
L = 11 pin plug-in

**IAR.T**  
SERIES  
SERIES  
IAR.T

**110A**  
INPUT POWER

**INPUT POWER**  
24D = 24VDC  
24A = 24VAC  
48A = 48VAC  
110A = 110VAC  
220A = 220VAC

## WIRING DIAGRAM:

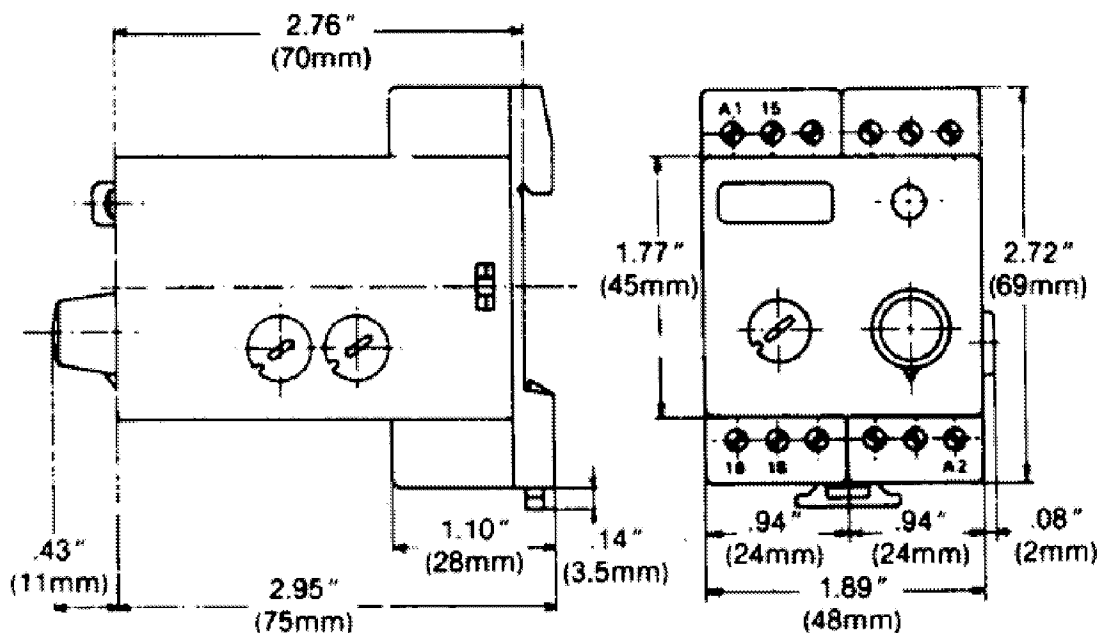


**Note:** Upon energization of the current control IAR.T Series Relay, the time delay, which is adjustable from .1 to 10 seconds, inhibits the output relay during start-up periods. The delay time is adjustable via a potentiometer located on the side of the case. For additional current transformer see "Accessories" section: L595 Series.

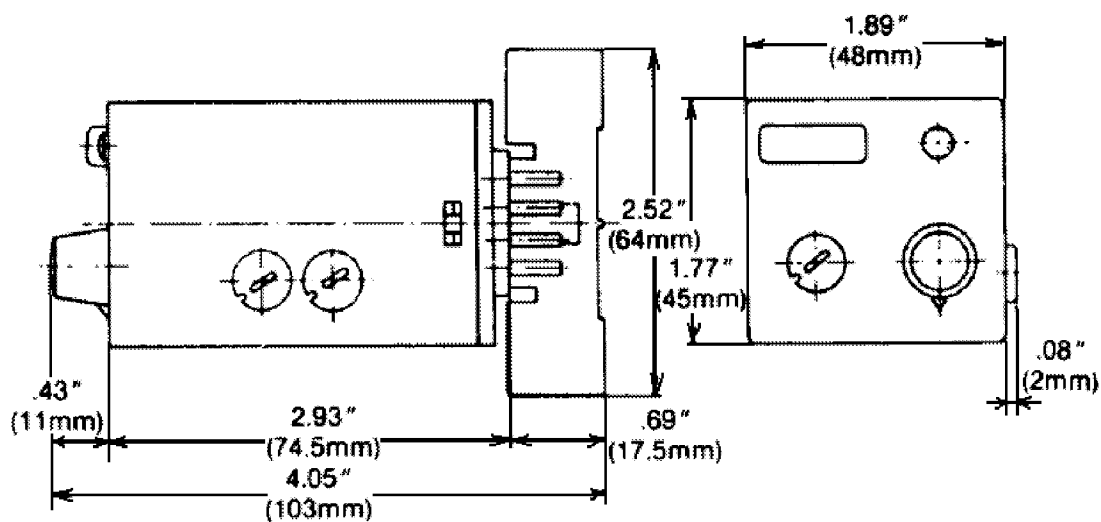
Products and specifications subject to change without notice.  
Consult factory for application assistance.

## DIMENSIONS:

## D - DIN-Rail



## L &amp; P - Sockets



Products and specifications subject to change without notice.  
Consult factory for application assistance.