

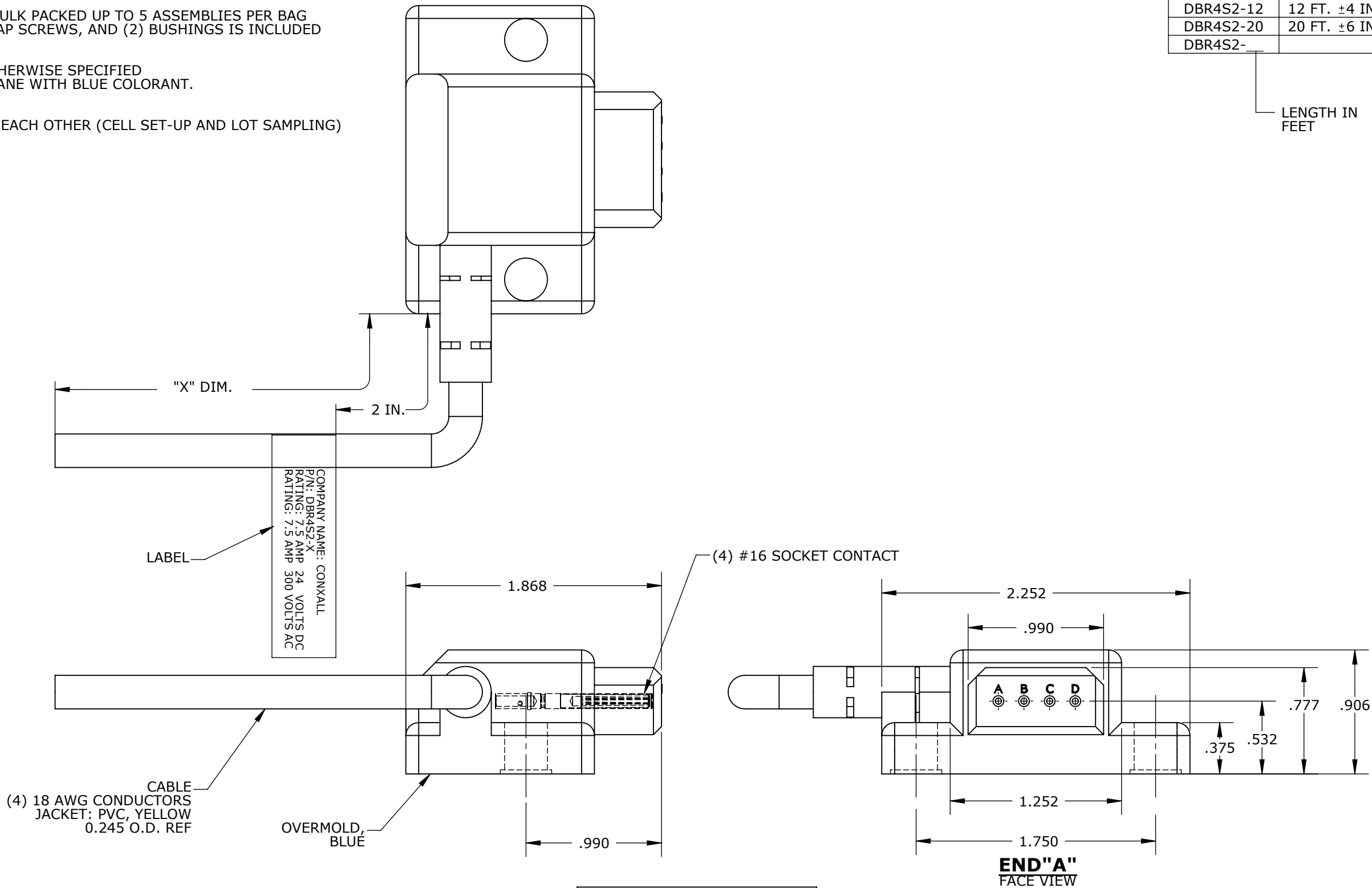
CUSTOMER PRINT

PART NUMBER: DBR4S2-XFAM

- NOTES:
1. FINISHED PRODUCT TO BE COILED AND BULK PACKED UP TO 5 ASSEMBLIES PER BAG
HARDWARE KIT WITH (2) O-RINGS, (2) CAP SCREWS, AND (2) BUSHINGS IS INCLUDED
WITH EACH DIE BLOCK.
 2. FOR PART NUMBER SEE TABLE.
 3. ALL DIMENSIONS REFERENCE UNLESS OTHERWISE SPECIFIED
 4. OVERMOLD BOOT MATERIAL: POLYURETHANE WITH BLUE COLORANT.
 5. ELECTRICAL TEST
 - a) PIN TO WIRE CONTINUITY
 - b) HI-POT @1500V DC ALL CONTACTS TO EACH OTHER (CELL SET-UP AND LOT SAMPLING)

PART NO.	"X" DIM.
DBR4S2-6	6 FT. ±2 IN.
DBR4S2-10	10 FT. ±3 IN.
DBR4S2-12	12 FT. ±4 IN.
DBR4S2-20	20 FT. ±6 IN.
DBR4S2-	

LENGTH IN
FEET



CUSTOMER APPROVAL	
THIS DOCUMENT CONTAINS CONFIDENTIAL INFORMATION PROPRIETARY TO CONXALL CORPORATION. ANY REPRODUCTION, DISCLOSURE, OR USE OF THIS DOCUMENT /INFORMATION IS EXPRESSLY PROHIBITED UNLESS AUTHORIZED IN WRITING BY CONXALL CORPORATION.	
APPROVED BY:	_____
DATE:	_____

C	BZ	01-12-11	UPDATED MANUFACTURING DRAWING PER ECR 7731
B	BZ	11-04-09	UPDATED MANUFACTURING DRAWING PER ECR 7297
A	BZ	06-09-09	DRAWING CREATED PER DOR 09-1230JT-2
REV.	INIT.	DATE	DESCRIPTION
	BZ	06-09-09	ORIG. DRAWN BY: DATE: 06-09-09
			CHECKED BY:
			APPROVED BY:
			SCALE: NTS SIZE: B SHEET: 1 OF 1
			FILE: DBR4S2-XFAM DIRECTORY: SLW
			TITLE: CABLE ASSEMBLY (BLUE) 4 POLE, 90° FEMALE DIE BLOCK STANDARD PRODUCT
			CUSTOMER: PART NUMBER: DBR4S2-XFAM
			REV C

WIRE COLOR CODE, END "A"			
POS. A	POS. B	POS. C	POS. D
RED/BLK	RED/WHT	RED	GRN