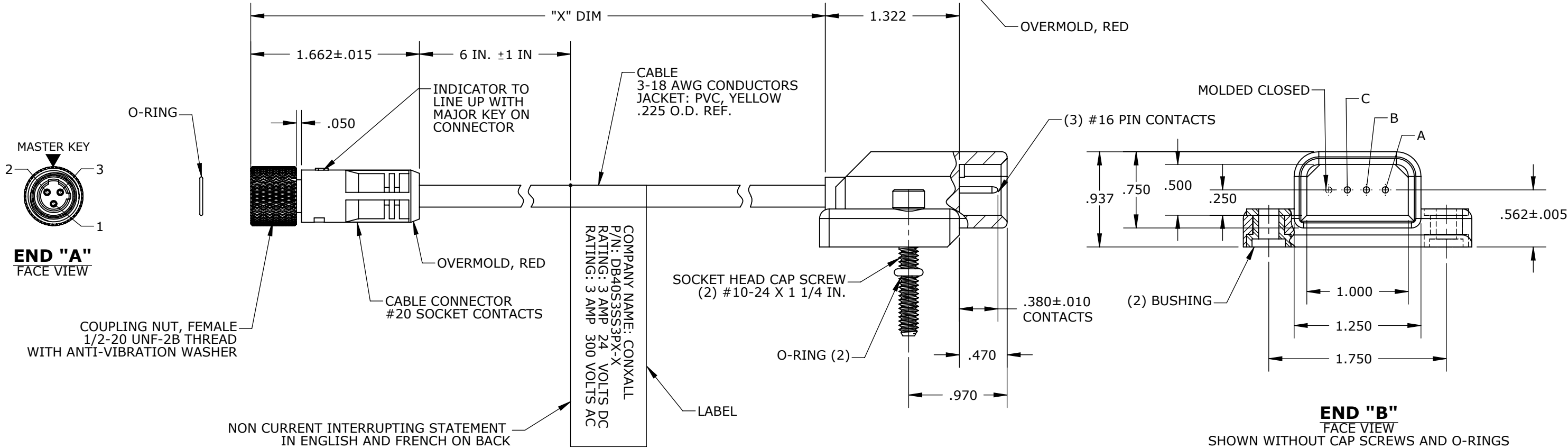


- NOTES:
1. FINISHED PRODUCT 3 FEET AND SHORTER TO BE BUNDLED  
FINISHED PRODUCT OVER 3 FEET TO BE COILED  
FOR PART NUMBER SEE TABLE
  2. ALL DIMENSIONS ARE REFERENCE UNLESS OTHERWISE SPECIFIED
  3. OVERMOLD BOOT MATERIAL: POLYURETHANE WITH RED COLORANT, TYP. BOTH ENDS
  4. ELECTRICAL RATINGS: 3 AMPS, 300 VOLTS AC  
3 AMPS, 24 VOLTS DC
  5. ELECTRICAL TEST:  
a) 100% CONTINUITY TEST  
b) AT CELL SET-UP AND SAMPLING:  
HI-POT@1500V DC EACH CONTACT AGAINST ALL OTHERS AND GROUND

3 POLE ASSEMBLIES	
PART NO.	"X" DIM
DB40S3SS3P1-1	1 FT ±1 IN.
DB40S3SS3P1-2	2 FT ±2 IN.
DB40S3SS3P1-3	3 FT ±2 IN.
DB40S3SS3P1-4	4 FT ±2 IN.
DB40S3SS3P1-6	6 FT ±2 IN.
DB40S3SS3P1-12	12 FT ±4 IN.
DB40S3SS3P1-	

LENGTH  
IN FEET



CUSTOMER APPROVAL	
THIS DOCUMENT CONTAINS CONFIDENTIAL INFORMATION PROPRIETARY TO CONXALL CORPORATION. ANY REPRODUCTION, DISCLOSURE, OR USE OF THIS DOCUMENT /INFORMATION IS EXPRESSLY PROHIBITED UNLESS AUTHORIZED IN WRITING BY CONXALL CORPORATION.	
APPROVED BY:	_____
DATE:	_____

C	PD	08-10-11	UPDATED MANUFACTURING DRAWING PER ECR 7934
B	BZ	11-17-09	UPDATED MANUFACTURING DRAWING PER ECR 7305
A	BZ	03-06-09	DRAWING CREATED PER DOR 09-1230JT
REV.	INIT.	DATE	DESCRIPTION
	BZ	02-12-09	ORIG. DRAWN BY: DATE: 02-12-09
			CHECKED BY:
			APPROVED BY:
			SCALE: NTS SIZE: B SHEET: 1 OF 1
			FILE: DB40S3SS3P1-XFAM DIRECTORY: SLW
			PART NUMBER: DB40S3SS3P1-XFAM
			REV: c

NOTE:  
POSITIONS MARKED "---" ARE MOLDED CLOSED

COLOR CODE END "A"			WIRE COLOR CODE, END "B"			
POS. 1	POS. 2	POS. 3	POS. A	POS. B	POS. C	POS. D
GRN	RED/ WHT	RED/ BLK	GRN	RED/ WHT	RED/ BLK	---