

Technical specification:

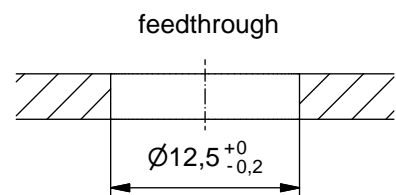
Rated voltage: IEC 61076-2-101	4pos 5pos 250 V 60 V
Current rating: IEC 61076-2-101	4 A at 40°C
Insulation resistance: IEC 60512-2	≥100 MΩ
Pollution degree: IEC 60664-1	3/2
Degree of protection: IEC 60529	IP 67, in mated condition
Temperature range: IEC 60664-1	-30°C ... +85°C
Mating cycles: IEC 60512-9a	≥100

Materials:

Contact:	CuZn
Contact plating:	Nickel, gold plated
Contact carrier:	PA 6.6, UL 94
Sealing:	FPM
Socket housing:	CuZn, nickel plated
Shroud:	Spring steel
-plating:	Tin plated

Installation specification:

recommended torque:	0,8-1 Nm
Conec installation tool:	Torque wrench: 36-000200 Insert across flats 15: 36-000320



Part no:	Description:	Pos	Note:
43-01174	SAL - 12 - FSH4 - X10	4	
43-01175	SAL - 12S - FSH4 - X10	4	with shroud
43-01176	SAL - 12 - FSH5.1 - X10	5	
43-01177	SAL - 12S - FSH5.1 - X10	5	with shroud

DO NOT ALTER CAD DRAWING BY HAND

Directive 2002/95/EC RoHS compliant

Index: a 24.03.11 fro Ä3914
Data sheet revised, technical specification changed

THIS DRAWING MAY NOT BE COPIED OR REPRODUCED IN ANY WAY, AND MAY NOT BE PASSED ON TO A THIRD PARTY WITHOUT WRITTEN PERMISSION.
OWNERSHIP AND COPYRIGHT OF CONEC GmbH

	dim. in mm	
	date	name
	drawn 11.10.07	Fromm
appd. 18.10.07	W.Schmidt	



title:
Male socket M12x1 axial, backmounting, dip solder, X10

dwg no:
43K1A500

part no: