

Technical specification:

Rated voltage: 250 V
IEC 61076-2-101

Current rating: 4 A at 40°C
IEC 61076-2-101

Insulation resistance: >=100 MΩ
IEC 60512

Pollution degree: 3/2
IEC 60664-1

Degree of protection: IP 67, in mated condition
IEC 60529

Temperature range: -40°C ... +85°C

Mating cycles: >=100
IEC 60512-9a

Materials:

Contact: CuZn

Contact plating: Nickel, gold plated

Contact carrier: PBT GF, UL 94

Sealing connector: FPM
chassis: NBR

Counternut: CuZn, nickel plated

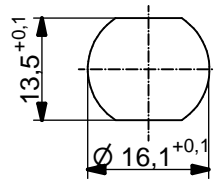
Socket housing: CuZn, nickel plated

Grouting: Polyurethane-resin, UL 94

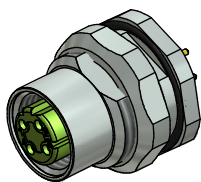
Installation specification:

Recommended torque: 1-1,2 Nm

Conec installation tool: Torque wrench: 36-000200
Insert across flats 19: 36-000250



Minimum wall thickness 1,5mm, alternativ panel cut-out d=16,1

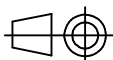


Part no:	Description:	Pos	Length L:	D1
43-01157	SAL - 12D - FKH4 - P5,5	4	5,5mm	Ø5,0
43-01118	SAL - 12D - FKH4 - P12	4	12mm	Ø5,0

DO NOT ALTER CAD DRAWING BY HAND

Directive 2002/95/EC RoHS compliant

Index: c 23.11.12 MG Ä4555
Data sheet revised, technical specification changed, materials corrected



dim. in mm

	date	name
drawn	23.03.07	Fromm
appd.	23.03.07	Mankopf

title: **Flanschkupplung M12x1 mit
Printkontakt, Hinterwandmontage,
Industrial Ethernet**

dwg no:

43K1A481

part no:

see table

general tolerance: 0 ± 0,50mm
0,0 ± 0,25mm
0,00 ± 0,10mm



THIS DRAWING MAY NOT BE COPIED OR REPRODUCED IN ANY WAY, AND MAY NOT BE PASSED ON TO A THIRD PARTY WITHOUT WRITTEN PERMISSION. OWNERSHIP AND COPYRIGHT OF CONEC GmbH