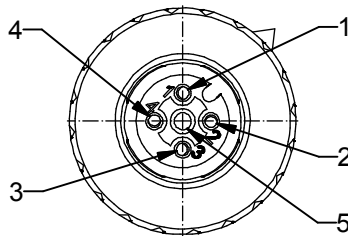
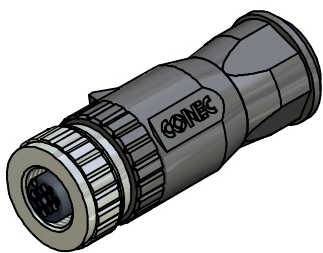


4pos



5pos



Directive 2002/95/EC  
"RoHS"  
Compliant

**Technical specification:**

Rated voltage: IEC 61076-2-101	4pos 250 V	5pos 60 V
Current rating: IEC 61076-2-101	4A at 40°C	
Insulation resistance: IEC 60512-2	>=10 GΩ	
Pollution degree: IEC 60664-1	3/2	
Degree of protection: IEC 60529	IP 67, in mated condition	
Temperature range: IEC 60664-1	-30°C ... +85°C	
Mating cycles: IEC 60512-9a	<=100	
Wire cross section:	AWG18 / max. 0,75mm <sup>2</sup>	

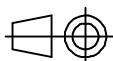
**Materials:**

Contact:	CuZn
Contact plating:	Nickel, gold plated
Contact carrier:	PA6, UL 94
Screw:	Steel, nickel plated
Cable sealing:	Elastomere
O-Ring:	FPM
Coupling nut:	Die cast, nickel plated
Housing:	PA6 GF, UL 94

Part no:	Description:	Pos:	Cable-Ø:
43-00091	SAL - 12 - RKC4 - S6/075	4	4 - 6mm
43-00092	SAL - 12 - RKC4 - S8/075	4	6 - 8mm
43-00093	SAL - 12 - RKC5 - S6/075	5	4 - 6mm
43-00094	SAL - 12 - RKC5 - S8/075	5	6 - 8mm

DO NOT ALTER CAD  
DRAWING BY HAND

Status: 19.01.09 db



dim. in mm

tolerance: ISO 2768-m

	date	name
drawn	19.01.09	Burschik
appd.	19.01.09	Schmidt

title: Female connector M12x1,  
field attachable, axial,  
screw connection

dwg no: Inventor 10

THIS DRAWING MAY NOT BE COPIED OR  
REPRODUCED IN ANY WAY, AND MAY NOT  
BE PASSED ON TO A THIRD PARTY WITHOUT  
WRITTEN PERMISSION.  
OWNERSHIP AND COPYRIGHT OF CONEC GmbH



43K1A834

part no: