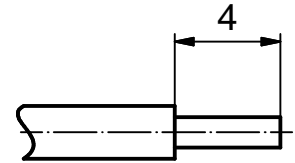


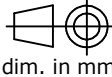

STRIPPING DIMENSION (b)



Part-no. as per finish			
(b) GOLD FLASH over NICKEL (c)	min. 20µm HARD GOLD over min. 50µm NICKEL	min. 30µm HARD GOLD over min. 50µm NICKEL	min. 50µm HARD GOLD over min. 50µm NICKEL
161A18309X	161B18309X	161C18309X	161J18309X

- (b) NOTES:
1. Material: Copper alloy
  2. Finish: See table
  3. Temperature range: -55 °C to +125 °C
  4. Rated current: 5 A maximum
  5. Contact resistance: ≤ 10 mOhm
  6. Crimping: Use crimp tool 360X10329X  
With tool insert 360X20069X  
Selector settings: 7 for AWG 24  
6 for AWG 26  
5 for AWG 28

Directive 2002/95/EC RoHS compliant

THIS DRAWING MAY NOT BE COPIED OR REPRODUCED IN ANY WAY, AND MAY NOT BE PASSED ON TO A THIRD PARTY WITHOUT WRITTEN PERMISSION. OWNERSHIP AND COPYRIGHT OF CONEC GmbH	DO NOT ALTER CAD DRAWING BY HAND				tolerance DIN ISO 2768-m	 dim. in mm	scale: 5:1	material: SEE NOTES
					date	name	title: <b>CRIMP PLUG CONTACT</b> screw machined version accepts cable AWG 28-24	
					drawn 04.06.03	Lehmenkühler	dwg no: Inventor 10 DIN-A4	
					appd. 10.06.03	Kühle		
					norm			
	1 x c	Ä 4116	26.09.11	Lehm.	d-old		part no: 16K1A968	sh: 1
	4 x b	Ä 3698	24.08.10	Lehm.			SEE TABLE	
a	Original							
rev.	description	date	name					