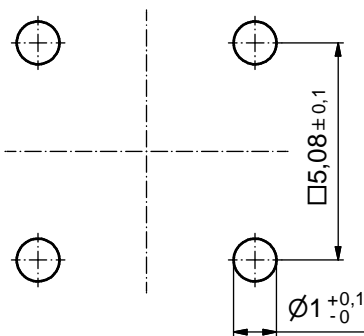


PLATING ITEM 1		PART-NO.
GOLD FLASH over NICKEL		124A10019X
30µin HARD GOLD over min. 50µin NICKEL		124C10019X

ⓑ NOTES:

1. MATERIAL: COPPER ALLOY
2. PLATING:
  - ITEM 1: SEE TABLE
  - ITEM 2: GOLD FLASH over NICKEL
  - ITEM 3: GOLD FLASH over NICKEL
  - ITEM 4: NICKEL PLATED

P.C.B. HOLE DRILLINGS ⓑ



Directive 2002/95/EC RoHS compliant

THIS DRAWING MAY NOT BE COPIED OR REPRODUCED IN ANY WAY, AND MAY NOT BE PASSED ON TO A THIRD PARTY WITHOUT WRITTEN PERMISSION. OWNERSHIP AND COPYRIGHT OF CONEC GmbH DO NOT ALTER CAD DRAWING BY HAND				tolerance		dim. in mm	scale: 10:1		
				date			material: SEE NOTES		
drawn		08.01.01		E. Mickenbecker		title: <b>HIGH POWER CONTACT FEMALE</b> SOLDER PIN 90° for DIN EN 60603 TYPE "M"			
appd.		08.01.01		J.Parei					
norm						dwg no:		DIN-A3	
d-old						12K1A031A			
5 x b		Ä4578		12.12.2012		Lehm.		sh: 1	
a		Original							
rev.		description		date		name		part no: SEE TABLE	

