

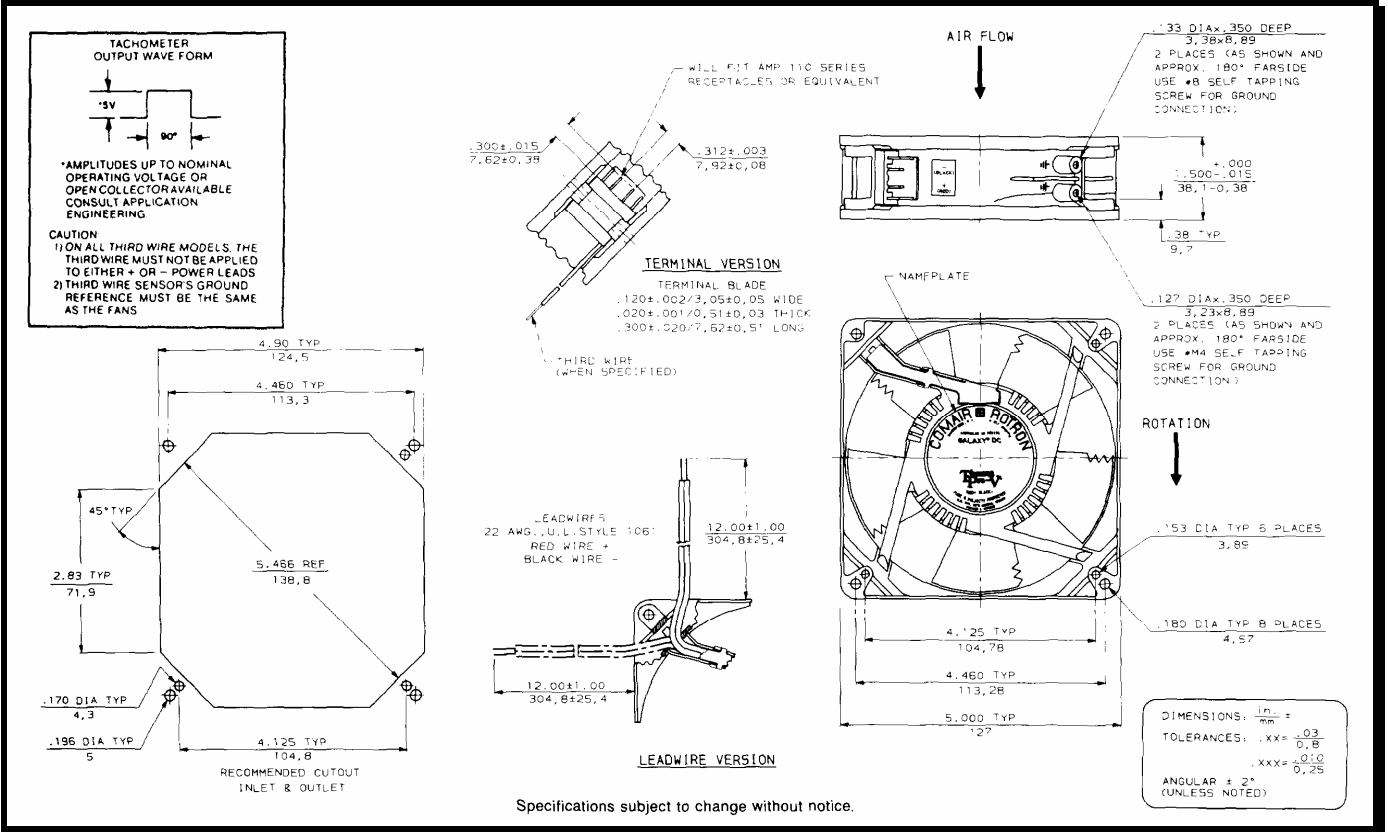
# SPECIFICATIONS



**Model Number:** GL12K6PNDNX  
**Part Number:** 19041261A

Jan 5, 2009

## Mechanical Drawing:



**Motor: High Speed Galaxy**

Nominal Voltage	= 12 VDC
Operating Voltage Range	= 6 - 14 vdc
Nominal Running Current	= 1.650 amps
Max. Locked Rotor Current	= 4.000 amps
Running Power	= 19.8 watts
Max Program Speed	= 3550 (RPM)
Min Program Speed	= 2950 (RPM)
Bearings	= Ball
Airflow (at full-speed)	= 160 CFM
Acoustic	= 55.5 dBA

**Construction:**  
 Venturi: Die Cast Zinc, Black  
 Propeller: Polycarbonate, Black, UL94V-0

**Life Expectancy:**  
 This fan is designed for continuous duty life of 80,000 hours at 40°C

**Agencies:**  
 UL, CUL, CE

**Additional Features:**  
 Fault Tolerant System  
 Brushless DC Motors  
 Electronic Locked Rotor Protection  
 Polarity Protected  
 14 volt operation has max. operating temp of 50°C

**Alarm Features:**

Output:	Open Collector
I <sub>c</sub>	20mA Max.
Logic:	Low on Pass/High on Fail
Delay:	Yes
Latching:	No
Isolated:	No

**Termination:**  
 Harness Assembly, 190±10mm, 22 AWG, UL1061 leadwires, Connector: Molex 39-01-4051  
 Terminals: Molex 39-00-0181

- Pin 1 - Return (Black)
- Pin 2 - Power (Red)
- Pin 3 - Alarm (Blue/White)
- Pin 4 - Program Lead (Yellow)
- Pin 5 - Not used