

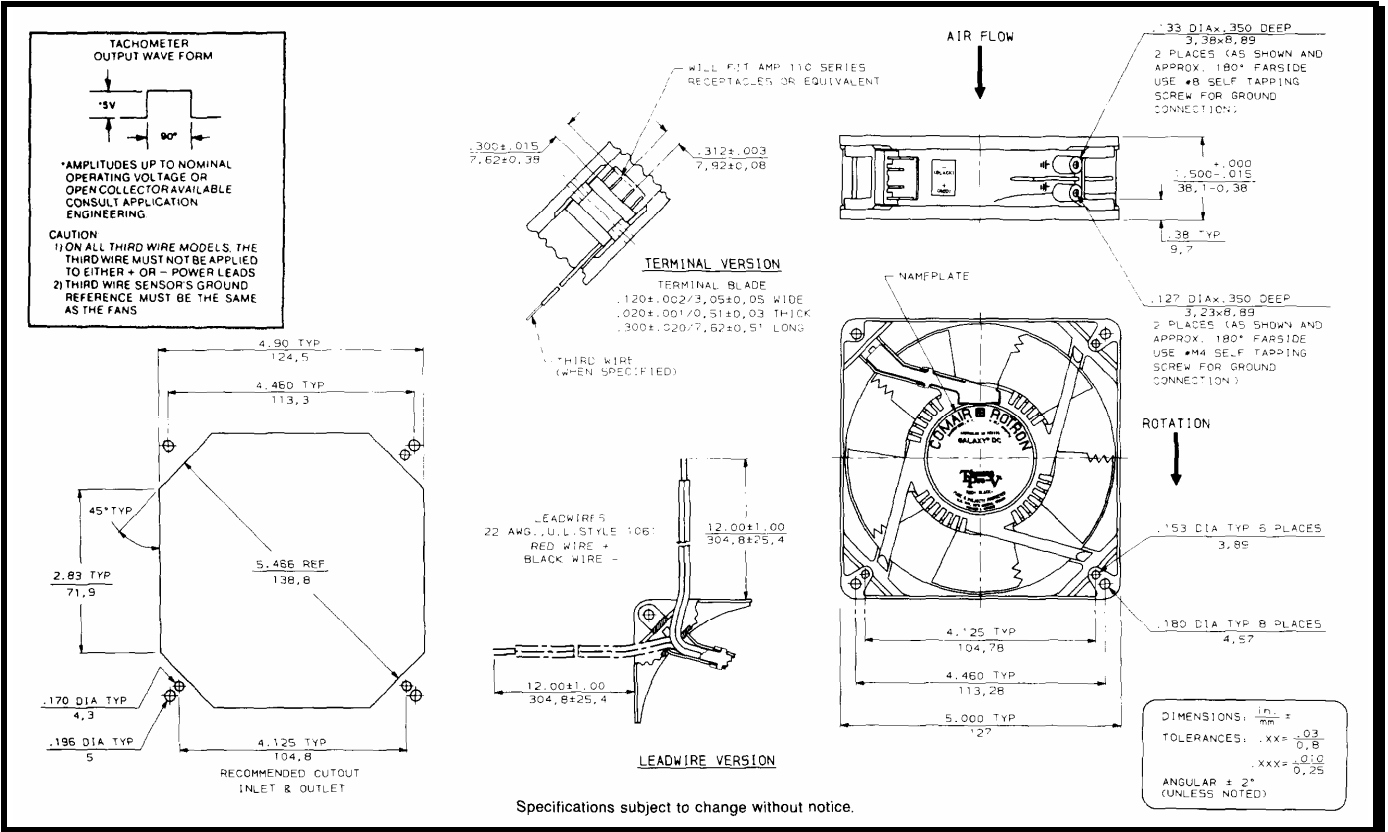
SPECIFICATIONS



Model Number: GL24S3TDN-E2
Part Number : 039992

January 31, 2006

Mechanical Drawing:



Motor: (Max Speed)

Nominal Voltage = 24 vdc
 Operating Voltage Range = 12 - 28 vdc
 Nominal Running Current = 0.630 amps
 Locked Rotor Current = 1.350 amps
 Running Power = 15.0 Watts
 Average Speed = 3200 RPM
 Bearings = Ball
 Air Flow = 150 CFM
 Acoustic = 53.6 dBA

Construction:
 Venturi: Die Cast Zinc, Black
 Propeller: Plastic, Black, UL 94V-0

Life Expectancy:
 This fan is designed for continuous duty life of 82,500 hours at 50°C.

Agency Certifications:
 UL, CSA, TUV

Additional Features:
 Brushless DC Motor
 Locked Rotor Protection
 Automatic Restart Capability
 Polarity Protected
 Operating Temperature: -10°C to 70°C
 Storage Temperature: -40°C to 85°C
 Enviro-Shield Type 2 Coating
 Thermal Speed Control - PTC on Hub

Fan Performance Sensor:

Output: 5 volt TTL

I_c 20mA Max.
 V_{cc} 28vdc

Logic: High on Pass, Low on Fail
 Delay: 10 sec. \pm 4 sec.
 Latching: No
 Isolated: No

Termination:
 12" Lead wires, 22 AWG, UL 1061
 Red - Power (+)
 Black - Ground (-)
 Blue/White - FPS