

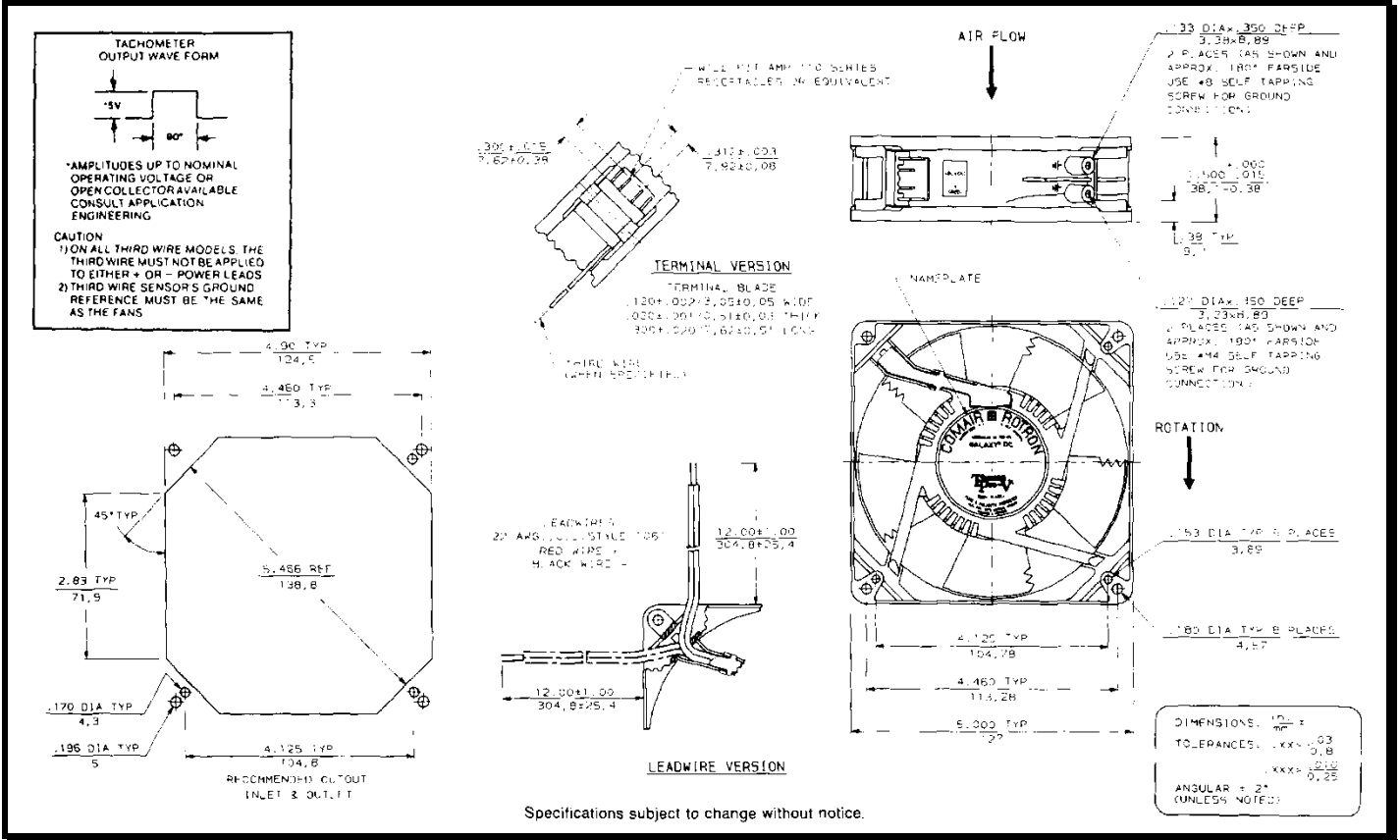
# SPECIFICATIONS



**Model Number:** GL24B7-E2  
**Part Number:** 19039031A

Feb. 22, 2005

## Mechanical Drawing:



### Motor:

Nominal Voltage = 24 vdc  
 Operating Voltage Range = 12 - 24 vdc  
 Nominal Running Current = 0.630 amps  
 Locked Rotor Current = 1.350 amps  
 Running Power = 15 watts  
 Average Speed = 3200 RPM  
 Bearings = Ball  
 Air Flow = 150 CFM  
 Acoustic = 53.6 dBA

### Construction:

Venturi: Die cast zinc alloy, painted black.  
 Propeller: Plastic, Black, UL 94V-0.

### Life Expectancy:

This fan is designed for continuous duty life of 82,500 hours at 50°C.

### Agency Certifications:

UL

### Additional Features:

Brushless DC Motor  
 Locked Rotor Protection  
 Automatic Restart Capability  
 Reverse Polarity Protected  
 Operating Temperature: -10°C to 70°C  
 Storage Temperature: -40°C to 85°C  
 Envirosield Type 2

### Tachometer:

Output: 5vdc TTL  
 I<sub>c</sub>: 5mA Typical  
 Isolated: No  
 Pulses per Revolution: 2

### Termination:

12" Lead wires, UL 1061, 22 AWG  
 Red - Power (+)  
 Black - Ground (-)  
 Blue/White - Tachometer (Output)