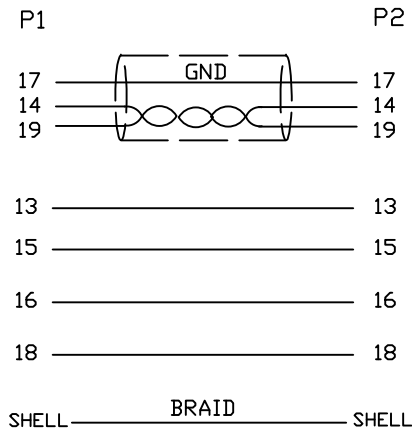
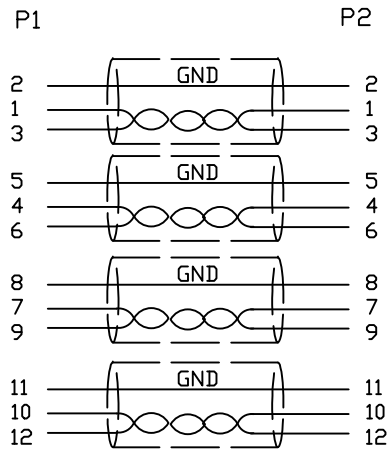


1.Wiring Diagram.



2.Cable test condition :

Open / Short : 100%

Insulation resistance : 5M ohms

Contact resistance : 2 ohm

Hipot : DC 300V / 1 sec

3.Each pcs with PE polybag.

NO.	PART NO.	DESCRIPTION	QTY	UNIT/REF	APPROVAL	DATE	CUSTOMER P/N:	REV
5	COPER	W20MM*L35MM	2					
4	PVC	45P PVC BLACK OVERMOLD	25g					
3	PE	LLDPE 500026 6201 INSIDE MOLDING	16g					
2	CONN	HDMI A TYPE MALE PIN G/F ,SHELL PLATED G/F, INSULATION BLACK	2	P1.P2				
1	CABLE	UL20276 [28AWG (7/0.12TA) *IP+D(7/0.12TA)*1C+AL]*5+28AWG (7/0.12TA) *4C +AEM(16/6/0.12AM) OD7.3 BLACK	1	5000mm				
BILL OF MATERIAL								

A		2015/10/10	
CnC Tech,LLC		TITLE	HDMI A/M TO HDMI A/M CABLE
		DWN NO.	740-10011-00500
DRAWN	EDWINLAI	DATE	2/28/17
CHECKED	Win.C	DATE	2/28/17
APPROVAL		CUSTOMER:	
		SHEET 1 OF 1	

