

2N2918

**DUAL SILICON
NPN TRANSISTOR**



TO-78 CASE



www.centrasemi.com

DESCRIPTION:

The CENTRAL SEMICONDUCTOR 2N2918 is a Dual Silicon NPN Transistor utilizing two individual chips mounted in a hermetically sealed metal case designed for differential amplifier applications.

MARKING: FULL PART NUMBER

MAXIMUM RATINGS: ($T_A=25^\circ\text{C}$)

Collector-Base Voltage
Collector-Emitter Voltage
Emitter-Base Voltage
Continuous Collector Current
Power Dissipation (One Die)
Power Dissipation (Both Dice)
Power Dissipation (One Die, $T_C=25^\circ\text{C}$)
Power Dissipation (Both Dice, $T_C=25^\circ\text{C}$)
Operating and Storage Junction Temperature

SYMBOL

V_{CB0} 45
 V_{CEO} 45
 V_{EBO} 6.0
 I_C 30
 P_D 300
 P_D 500
 P_D 750
 P_D 1.5
 T_J, T_{stg} -65 to +200

UNITS

V
V
V
mA
mW
mW
mW
W
 $^\circ\text{C}$

ELECTRICAL CHARACTERISTICS: ($T_A=25^\circ\text{C}$ unless otherwise noted)

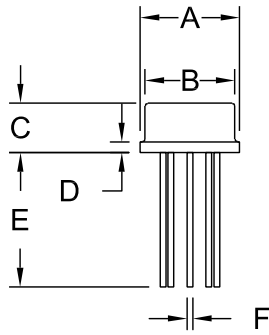
SYMBOL	TEST CONDITIONS	MIN	MAX	UNITS
I_{CBO}	$V_{CB}=45\text{V}$		10	nA
I_{CEO}	$V_{CE}=5.0\text{V}$		2.0	nA
I_{EBO}	$V_{EB}=5.0\text{V}$		2.0	nA
BV_{CBO}	$I_C=10\mu\text{A}$	45		V
BV_{CEO}	$I_C=10\text{mA}$	45		V
BV_{EBO}	$I_E=10\mu\text{A}$	6.0		V
$V_{CE(SAT)}$	$I_C=1.0\text{mA}, I_B=0.1\text{mA}$		0.35	V
$V_{BE(ON)}$	$V_{CE}=5.0\text{V}, I_C=100\mu\text{A}$		0.70	V
h_{FE}	$V_{CE}=5.0\text{V}, I_C=10\mu\text{A}$	150	600	
h_{FE}	$V_{CE}=5.0\text{V}, I_C=10\mu\text{A}, T_A=-55^\circ\text{C}$	30		
h_{FE}	$V_{CE}=5.0\text{V}, I_C=100\mu\text{A}$	225		
h_{FE}	$V_{CE}=5.0\text{V}, I_C=1.0\text{mA}$	300		
f_T	$V_{CE}=5.0\text{V}, I_C=500\mu\text{A}, f=20\text{MHz}$	60		MHz
C_{ob}	$V_{CB}=5.0\text{V}, I_E=0, f=140\text{kHz}$		6.0	pF
NF	$V_{CE}=5.0\text{V}, I_C=10\mu\text{A}, R_S=10\text{k}\Omega, f=1.0\text{kHz}, BW=200\text{Hz}$		3.0	dB
h_{FE1}/h_{FE2}	$V_{CE}=5.0\text{V}, I_C=100\mu\text{A}$	0.8	1.0	
$ V_{BE1}-V_{BE2} $	$V_{CE}=5.0\text{V}, I_C=10\mu\text{A}$		10	mV
$ V_{BE1}-V_{BE2} $	$V_{CE}=5.0\text{V}, I_C=100\mu\text{A}$		5.0	mV
$ V_{BE1}-V_{BE2} $	$V_{CE}=5.0\text{V}, I_C=1.0\text{mA}$		10	mV
$\Delta(V_{BE1}-V_{BE2})$	$V_{CE}=5.0\text{V}, I_C=100\mu\text{A}, T_A=-55^\circ\text{C}$ to $+25^\circ\text{C}$		1.6	mV
$\Delta(V_{BE1}-V_{BE2})$	$V_{CE}=5.0\text{V}, I_C=100\mu\text{A}, T_A=+25^\circ\text{C}$ to $+125^\circ\text{C}$		2.0	mV

R1 (4-March 2011)

2N2918
DUAL SILICON
NPN TRANSISTOR

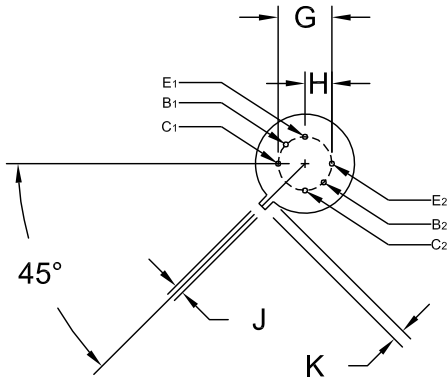


TO-78 CASE - MECHANICAL OUTLINE



SYMBOL	DIMENSIONS		DIMENSIONS	
	INCHES		MILLIMETERS	
	MIN	MAX	MIN	MAX
A (DIA)	0.335	0.370	8.51	9.40
B (DIA)	0.305	0.335	7.75	8.51
C	0.150	0.185	3.81	4.70
D	-	0.040	-	1.02
E	0.500	-	12.70	-
F (DIA)	0.016	0.021	0.41	0.53
G	0.200		5.08	
H	0.100		2.54	
J	0.028	0.034	0.71	0.86
K	0.029	0.045	0.74	1.14

TO-78 (REV: R1)



MARKING: FULL PART NUMBER

R1

R1 (4-March 2011)

OUTSTANDING SUPPORT AND SUPERIOR SERVICES



PRODUCT SUPPORT

Central's operations team provides the highest level of support to insure product is delivered on-time.

- Supply management (Customer portals)
- Inventory bonding
- Consolidated shipping options
- Custom bar coding for shipments
- Custom product packing

DESIGNER SUPPORT/SERVICES

Central's applications engineering team is ready to discuss your design challenges. Just ask.

- Free quick ship samples (2nd day air)
- Online technical data and parametric search
- SPICE models
- Custom electrical curves
- Environmental regulation compliance
- Customer specific screening
- Up-screening capabilities
- Special wafer diffusions
- PbSn plating options
- Package details
- Application notes
- Application and design sample kits
- Custom product and package development

CONTACT US

Corporate Headquarters & Customer Support Team

Central Semiconductor Corp.
145 Adams Avenue
Hauppauge, NY 11788 USA
Main Tel: (631) 435-1110
Main Fax: (631) 435-1824
Support Team Fax: (631) 435-3388
www.centalsemi.com

Worldwide Field Representatives:
www.centalsemi.com/wwreps

Worldwide Distributors:
www.centalsemi.com/wwdistributors

For the latest version of Central Semiconductor's **LIMITATIONS AND DAMAGES DISCLAIMER**, which is part of Central's Standard Terms and Conditions of sale, visit: www.centalsemi.com/terms

Summary: All transistors manufactured in the TO-78 package are discontinued and now classified as End of Life (EOL).

Although Central Semiconductor Corp. makes every effort to continue to produce devices that have been proclaimed EOL (End of Life) by various manufacturers, it is an accepted industry practice to discontinue certain devices when customer demand falls below a minimum level of sustainability. Accordingly, the following product(s) have been transitioned to End of Life status as part of Central's Product Management Process. Any replacement product will be noted below. The effective date for placing the last purchase order will be six(6) months from the date of this notice and twelve(12) months from the notice date for final shipments; this may be extended if inventory is available.

<u>Central Part Number</u>	<u>Replacement</u>
CEN876	N/A
CEN894	N/A
CEN895	N/A
CEN896	N/A
CEN911	N/A
CEN947	N/A
CEN955 W/DATA	N/A
MD2219A	N/A
MD2369	N/A
MD2369A	N/A
MD2369B	N/A
MD2905	N/A
MD2905A	N/A
MD5179	N/A
MD7000	N/A
MD7001	N/A
MD7003	N/A
MD7003A	N/A
MD7003B	N/A
MD8002	N/A
MD8003	N/A
MD918	N/A
MD918A	N/A
MD918B	N/A
MD984	N/A
2N2060	N/A
2N2060A	N/A
2N2060M	N/A
2N2223	N/A
2N2223A	N/A
2N2453	N/A
2N2453A	N/A
2N2480	N/A
2N2480A	N/A
2N2639	N/A
2N2640	N/A
2N2641	N/A
2N2642	N/A

*** CONTINUED ***

*** CONTINUED FROM PRIOR PAGE ***

<u>Central Part Number</u>	<u>Replacement</u>
2N2643	N/A
2N2644	N/A
2N2652	N/A
2N2652A	N/A
2N2720	N/A
2N2721	N/A
2N2722	N/A
2N2903	N/A
2N2903A	N/A
2N2913	N/A
2N2914	N/A
2N2915	N/A
2N2915A	N/A
2N2916	N/A
2N2916A	N/A
2N2917	N/A
2N2918	N/A
2N2919	N/A
2N2919A	N/A
2N2920	N/A
2N2920A	N/A
2N3726	N/A
2N3727	N/A
2N3806	N/A
2N3807	N/A
2N3808	N/A
2N3809	N/A
2N3810	N/A
2N3810A	N/A
2N3811	N/A
2N3811A	N/A
2N4015	N/A
2N4016	N/A
2N4854	N/A
2N4937	N/A
2N4938	N/A
2N4939	N/A
2N5793	N/A
2N5794	N/A
2N5796	N/A
2N5912	N/A
2N6502	N/A

*** CONTINUED ***



<http://www.centrasemi.com>

PDN01061

1/17/17

7/17/17

1/17/18

*** CONTINUED FROM PRIOR PAGE ***

<u>Central Part Number</u>	<u>Replacement</u>
----------------------------	--------------------

Central would be happy to assist you by providing additional information or technical data to help locate an alternate source if we have no replacement available. Please email your requests to engineering@centrasemi.com.