

SDT Series Micro Mini Pendulum Surface Mount Detect Switches

Features/Benefits

- **Low profile package sits just 3,30 mm off PCB**
- **Design allows top or side actuation**
- **Low actuation force, 30 grams max.**
- **Pick and place compatible, available in tape & reel packaging**
- **RoHS compliant and compatible**

Typical Applications

- **Consumer electronics**
- **Computers**
- **Medical devices**
- **ATCA or MicroTCA devices**



Specifications

CONTACT RATING: 1 mA 5 VDC
 MECHANICAL AND ELECTRICAL LIFE: 100,000 cycles min.
 CONTACT RESISTANCE: 1 Ω max. initial.
 INSULATION RESISTANCE: 10 M Ω min. between adjacent contacts.
 OPERATING TEMPERATURE: -20°C to +70°C
 STORAGE TEMPERATURE: -30°C to +80°C
 PACKAGING: Tape & reel, 2,200 per reel.

Materials

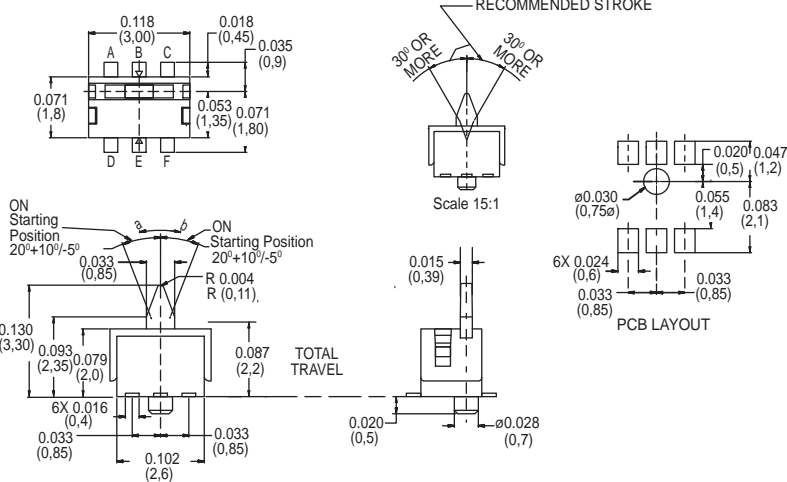
BASE: LCP
 COVER: PA 46
 ACTUATOR: LCP
 MOVABLE BLADE: Stainless steel, gold over nickel plate.
 TERMINALS: Phosphor bronze, gold over nickel plate.

NOTE: Specifications and materials listed above are for switches with standard options. For information on specific and custom switches, consult Customer Service Center.

Build-A-Switch

Complete part numbers for SDT Series are shown below.

PART NUMBER	PACKAGING	SCHEMATIC
SDT001	TAPE & REEL	 CIRCUIT DIAGRAM



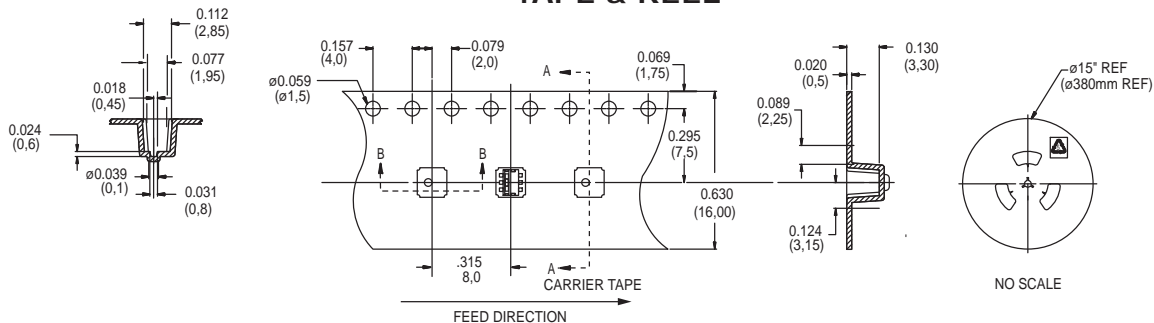
SDT001



F

Detect

TAPE & REEL



Dimensions are shown: Inches (mm)
 Specifications and dimensions subject to change