

C&K KP Series

Piezo Pulse Momentary Pushbutton Switches



- Features/Benefits**
 - *Piezo switch element—no mechanical wear*
 - *One piece hermetically sealed construction*
 - *Shock resistant switch, withstands harsh environments*
 - *Available in aluminum and plastic housings*
 - *RoHS compliant models available*

Typical Applications
 - *Industrial controls*
 - *High end instrumentation*
 - *Gas pumps, outdoor environments*

Specifications

RATING: 250 mA continuous, 50 V max.

ELECTRICAL LIFE: 10,000,000 actuations typ.

CONTACT RESISTANCE: ON: 7.5Ω; OFF: 5 megohms.

INSULATION RESISTANCE: 10⁹Ω min.

ACTUATION: 8oz typical up to 3lbs max.

OPERATING TEMPERATURE: -40°C to 85°C.

CIRCUIT CLOSURE DURATION: 50 mS min.

Materials

HOUSING: L and S Models: Polyetherimide (UL 94V-0), black, standard; M Models: Aluminum, natural iridite finish.

WIRE LEADS: 22 AWG with TFE Teflon insulation; Red positive lead, violet negative lead.

GRAPHIC RETAINING RING: 6/6 nylon (UL 94V-2).

MOUNTING NUT: L Models: Nylon; M and S Models: Steel, zinc plated.

LOCKWASHER: M and S Models only: Steel, zinc plated.

Any models supplied with W4P, W6P or Y4P termination are RoHS compliant and compatible.

NOTE: For the latest information regarding RoHS compliance, please go to: www.ittcannon.com/rohs. Any models supplied with W4P, W6P or Y4P termination are RoHS compliant and compatible.

NOTE: Specifications and materials listed above are for switches with standard options. For information on specific and custom switches, consult Customer Service Center.

Build-A-Switch

To order, simply select desired option from each category and place in the appropriate box. Available options are shown and described on pages A-87 and A-88. For additional options not shown in catalog, consult Customer Service Center.

Model No.

KPD1S2 SPST, DC, small plastic housing, black
KPD1M0 SPST, DC, small aluminum housing
KPD1S1 SPST, DC, small plastic housing, white


Terminations

W4P 4" wire lead
W6P 6" wire lead
Y4P 4" wire lead with connector

W4 4" wire lead
W6 6" wire lead
Y4 4" wire lead with connector

Graphic Retaining Ring

NONE No ring
2 Black



ITT

Dimensions are shown: Inches (mm)
Specifications and dimensions subject to change

A-86

www.ittcannon.com

C&K KP Series Piezo Pulse Momentary Pushbutton Switches



A

Pushbutton

MODELS

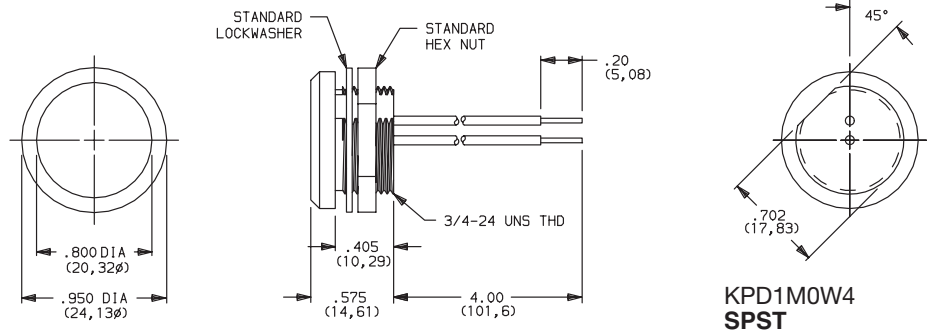


M (Small Aluminum)

MODEL NO.	CIRCUIT TYPE	HOUSING COLOR
KPD1M0	DC	NATURAL

SPST N.O. MOMENTARY
(See schematic page A-84.)

Metal housing of 'M' Small Aluminum Model should be grounded.

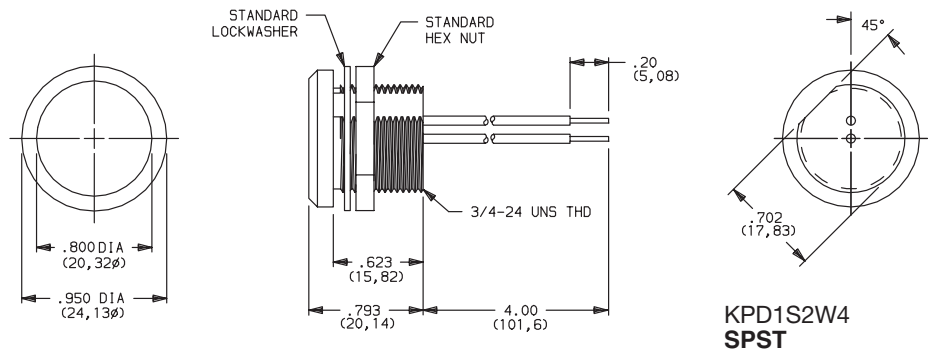


**KPD1M0W4
SPST**

S (Small Plastic)

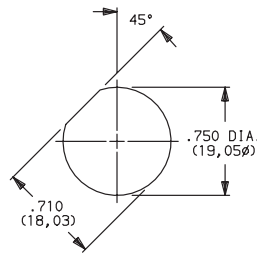
MODEL NO.	CIRCUIT TYPE	HOUSING COLOR
KPD1S1	DC	WHITE
KPD1S2	DC	BLACK

SPST N.O. MOMENTARY
(See schematic page A-84.)



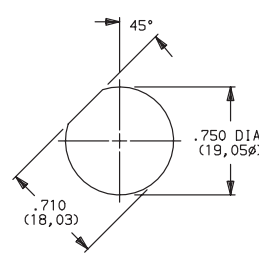
**KPD1S2W4
SPST**

PANEL MOUNTING



M Models

Panel thickness: .200 (5,80) max.



S Models

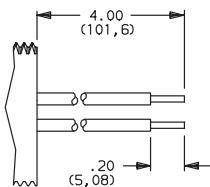
Panel thickness: .350 (8,89) max.

TERMINATIONS



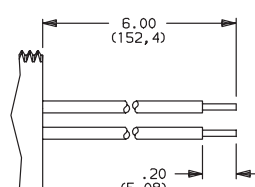
W4P 4" WIRE LEAD, .20 SKIP

W4 4" WIRE LEAD, .20 STRIP



W6P 6" WIRE LEAD, .20 SKIP

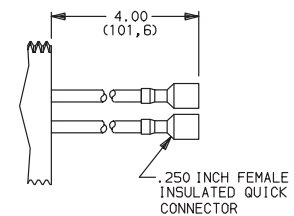
W6 6" WIRE LEAD, .20 STRIP



Y4P 4" WIRE LEAD WITH .250" FEMALE

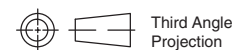
INSULATED QUICK CONNECTOR

Y4 4" WIRE LEAD WITH .250" FEMALE
INSULATED QUICK CONNECTOR



NOTE: Standard wire leads are 22 AWG. Red positive lead, violet negative lead.
Other colors, lengths and gauge available, consult Customer Service Center.

W4P, W6P or Y4P options are RoHS compliant and compatible.



Dimensions are shown: Inches (mm)
Specifications and dimensions subject to change

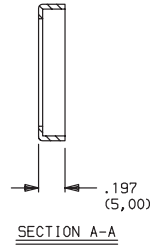
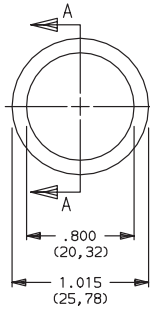


A

Pushbutton

C&K KP Series Piezo Pulse Momentary Pushbutton Switches

GRAPHIC RETAINING RING



OPTION CODE	RING COLOR
NONE	NO GRAPHIC RING
2	BLACK

Other colors available, consult Customer Service Center.

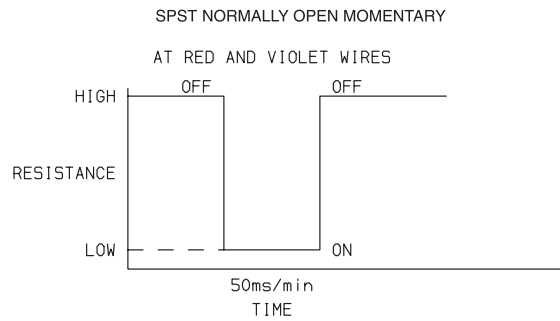
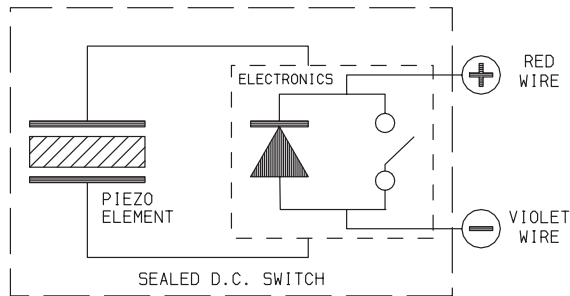
KPD1S2Y4P2
SPST

RING SIMPLY SNAPS ON—HOLDS GRAPHIC IN POSITION, OR CAN BE USED ALONE AS DECORATIVE TRIM RING.

NOTE: Graphic may be installed by customer or C&K, consult Customer Service Center

SCHEMATICS:

DC— KPD1 MODEL



Dimensions are shown: Inches (mm)
Specifications and dimensions subject to change